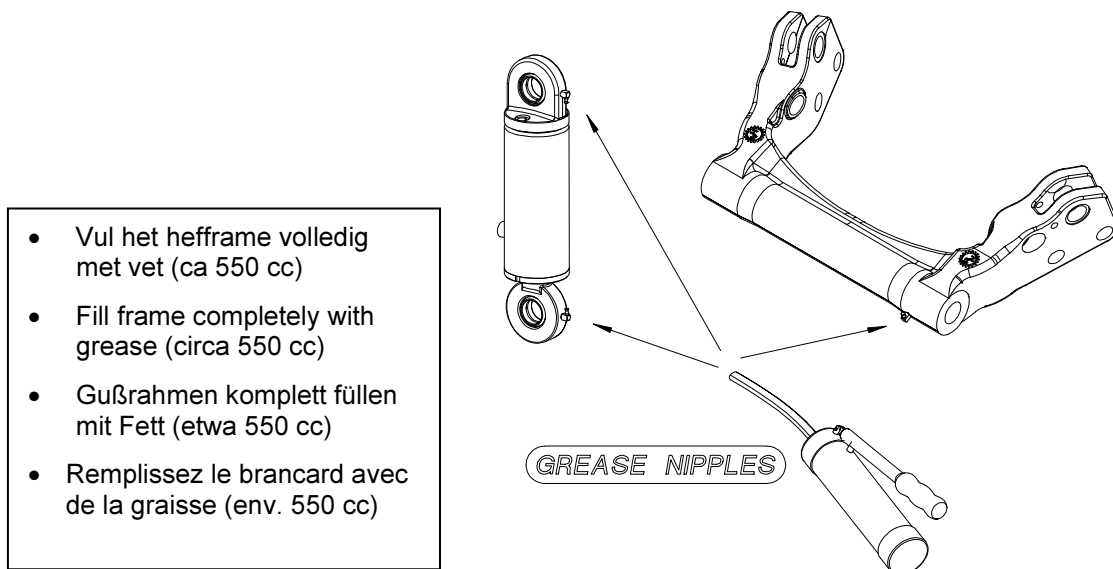
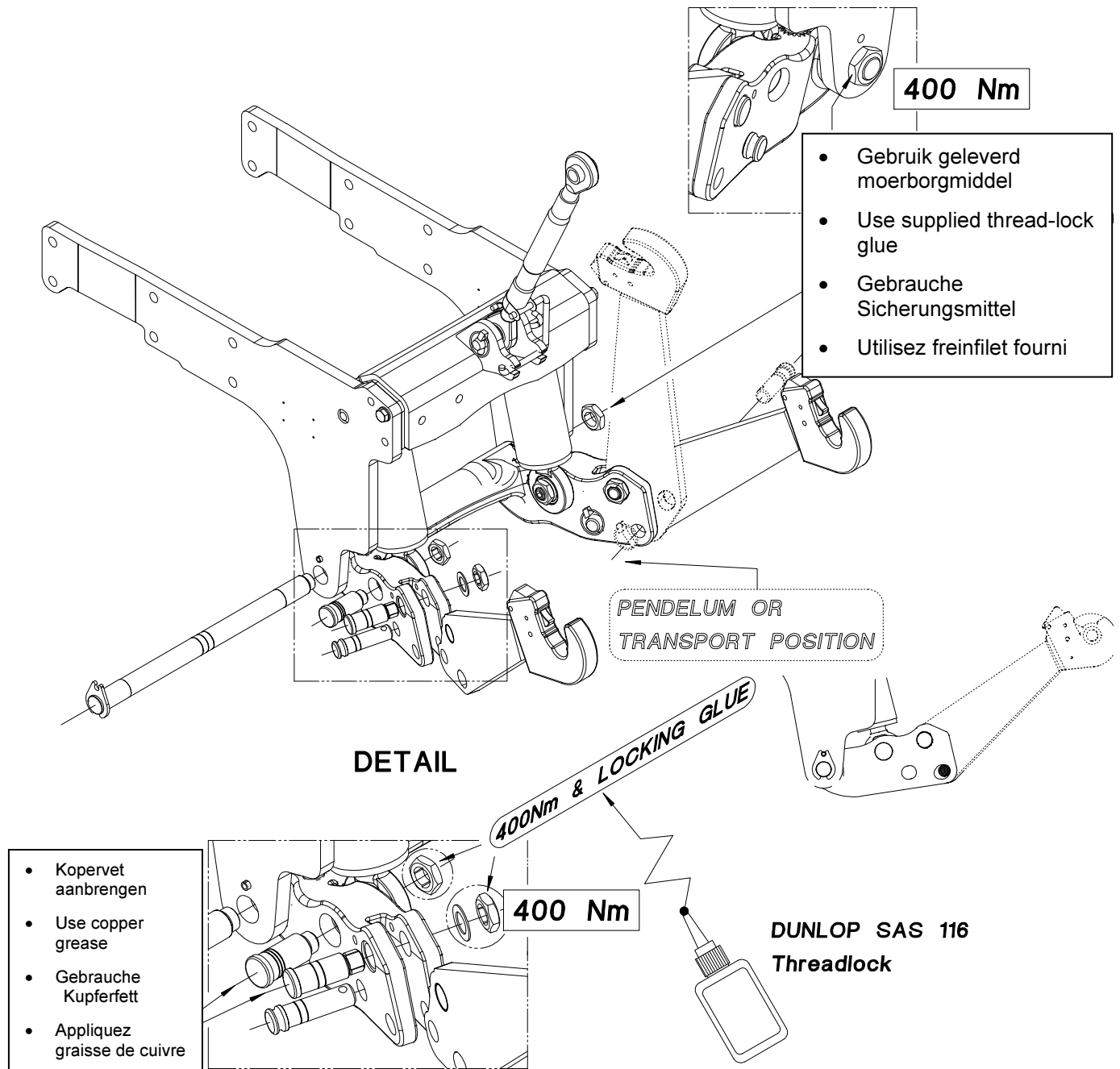


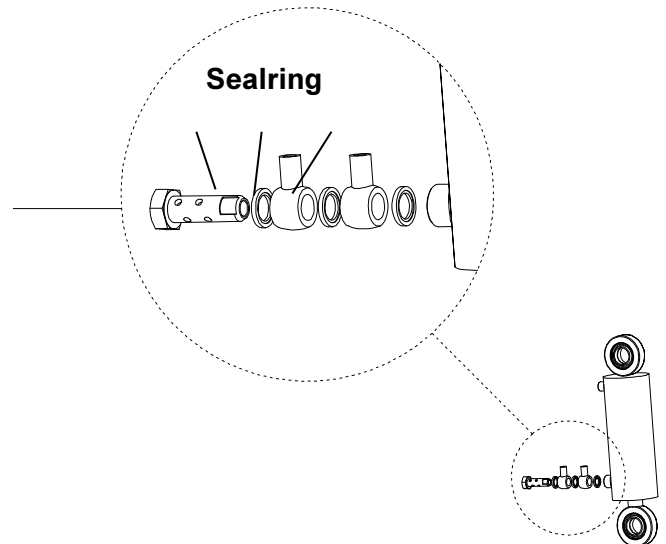
HZ001-b : Fitting HITCHES of the 2002 series – b



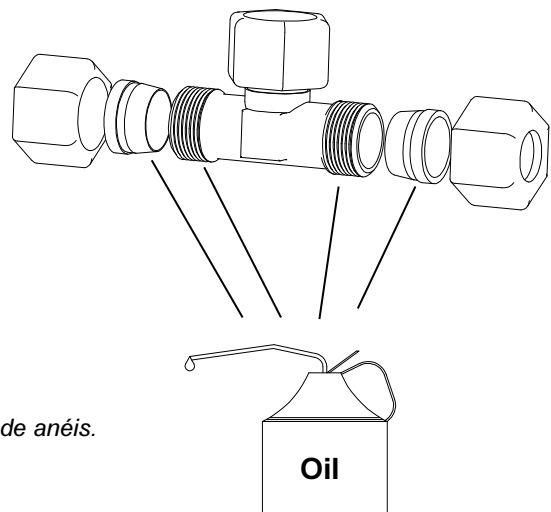
HZ002: Hydraulics

- NL** De fronthefficijnders zijn standaard aangesloten op een van de stuurventielen van de tractor, zie elders in dit montagevoorschrift.
- GB** The cylinders normally are connected to one of the valves of the tractor, see elsewhere in this document.
- D** Die Hubzylinder werden an ein Ventil des Schleppers angeschlossen, sehe anderswo in diesen Montageanweisungen.
- F** Les vérins du relevage avant sont à brancher sur un des distributeurs du tracteur.
- DK** Cylindrene tilsluttes normalt til en af traktorens ventiler, se andet sted i dette dokument.
- I** Il collegamento dei cilindri del sollevatore frontale ad una delle valvole di comando del trattore è standard, fare riferimento alle istruzioni in merito fornite in questa documentazione.
- ESP** Los cilindros de izada frontales suelen ir conectados a una de las válvulas de dirección del tractor. Véase las instrucciones de montaje más adelante.
- POR** Os cilindros são geralmente ligados a uma das válvulas do tractor. Consulte as instruções de montagem algures neste documento.

- NL** Montage met behulp van banjo, indien van toepassing.
- GB** Mounting with help of a banjo-bolt, if applicable.
- D** Montage mit Hilfe des Banjo-Bolzens, wenn anwendbar.
- F** Montage à l'aide des vis banjo (si applicable)
- DK** Monteringen ved hjælp af en banjobolt, om nødvendigt.
- I** Se necessario procedere al montaggio con il bullone maschio (raccordo a banjo)
- ESP** Montaje con la ayuda de un bulón banjo, si es necesario.
- POR** Montagem com a ajuda do parafuso banjo, se necessário.



- NL** Smeer bij alle snijverbindingen olie op snijringen en schroefdraad.
- GB** Oil the rings and threads for all the ring-fitting connections.
- D** Alle Schneidringen und Gewinden ölen.
- F** Huilez les raccords hydraulique à olive et les filetages avant assemblage.
- DK** Smør alle ringe og gevind ved samlinger med olie.
- I** Lubrificare tutti i collegamenti ad anello, applicando l'olio sulle filettature e sugli anelli
- ESP** Engrase todos los anillos y la rosca de tornillo de las uniones.
- POR** Lubrifique os anéis e as roscas para todas as ligações de encaixe de anéis.

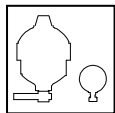
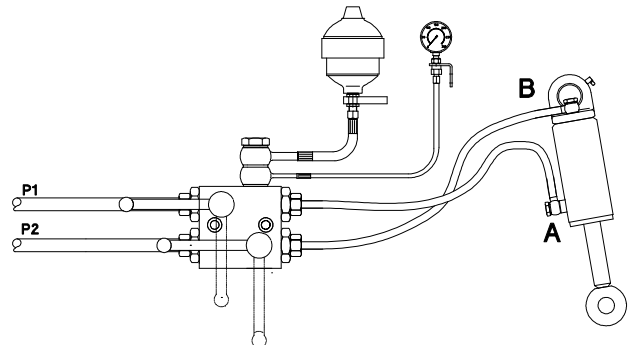


HZ003: Multivalve

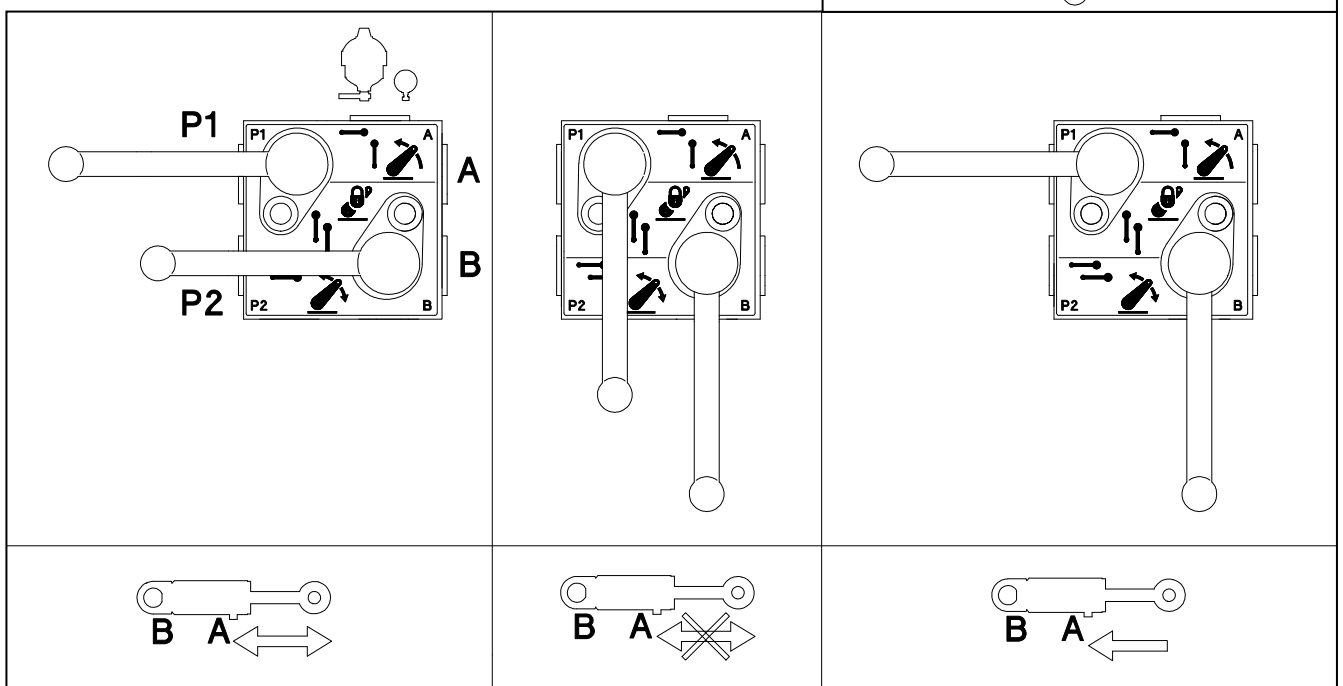
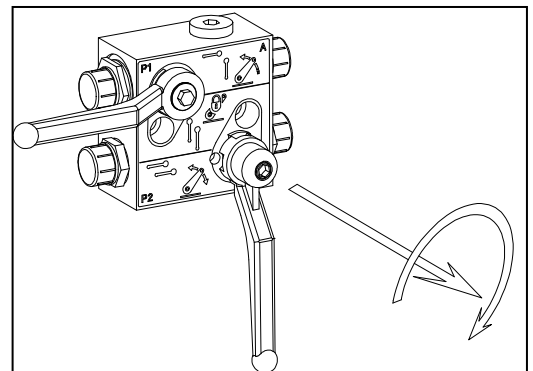
- P1&P2:**
- Aansluiten op dubbelwerkend stuurventiel MET ZWEEFSTAND van de tractor
 - Connect to the double acting valve WITH OPEN POSITION of the tractor.
 - Anschließen am doppeltwirkende Ventil (MIT OFFEN STAND) des Schleppers.
 - Branchez P1 et P2 sur un distributeur double effet pourvu d'une position FLOTTANTE
 - Tilslut til traktorens dobbeltvirkende ventil WITH OPEN POSITION.
 - Collegare alla valvola di comando a doppio effetto WITH OPEN POSITION del trattore.
 - Conectar a la válvula de dirección de doble acción WITH OPEN POSITION del tractor.
 - Ligar à válvula de acção dupla WITH OPEN POSITION do tractor.

- A:**
- Cilinder enkelwerkend (heffen)
 - Cylinder single acting (lift)
 - Zylinder einfachwirkend (heben)
 - Branchement du vérin (montée)
 - Cylinder enkeltvirkende (løft)
 - Cilindro ad effetto semplice
 - Cilindro de simple acción (izar)
 - Cilindro de acção simples (elevação)

- B:**
- Cilinder dubbelwerkend
 - Cylinder double acting
 - Zylinder doppeltwirkend
 - Branchement du vérin (descente)
 - Cylinder dobbeltvirkende
 - Cilindro a doppio effetto
 - Cilindro de doble acción
 - Cilindro de acção dupla

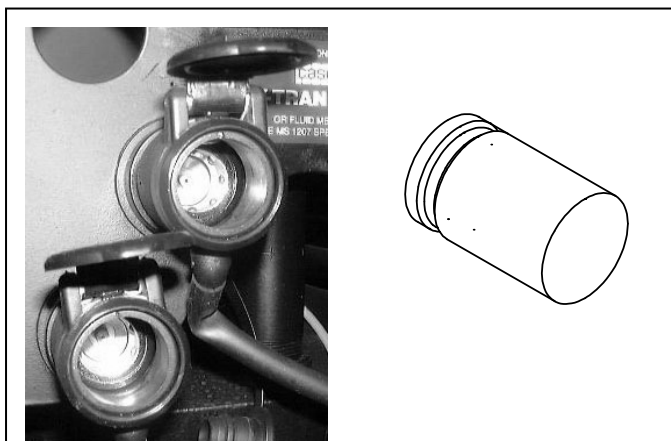
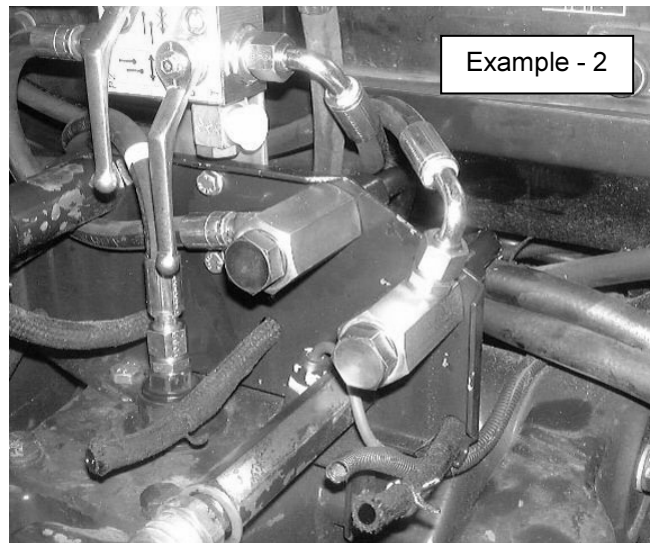
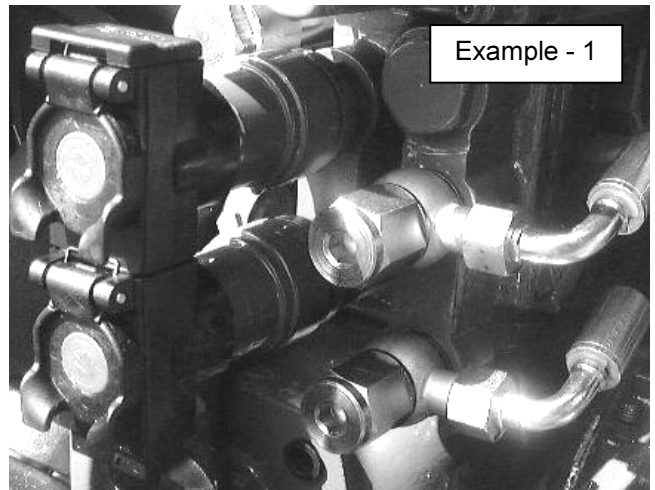


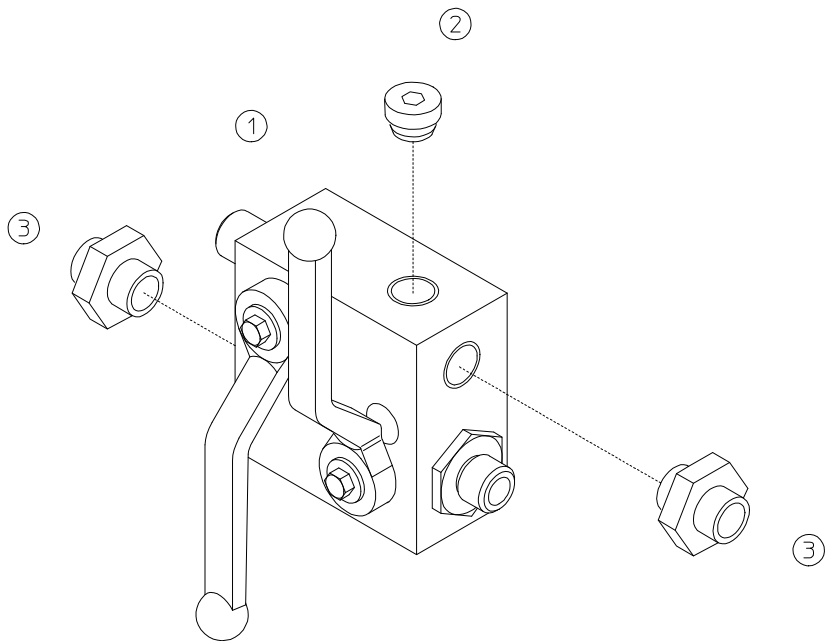
- Accumulator & drukmeter (optie)
- Accumulator & pressure gauge (option)
- Speicher & Manometer (Option)
- Accumulateur & manomètre (option)
- Akkumulator & trykmåler (ekstra)
- Accumulatore & manometro (optional)
- Acumulador & manómetro (optativo)
- Acumulador e manómetro (opcional)



HZ000 Snelkoppelingen – Quick Couplings – Schnellkopplungen – Raccords Rapide

- In verband met vernieuwde veiligheids-voorschriften moeten de snelkoppelingen van het dubbelwerkend stuurventiel van de tractor (waarop de fronthef wordt aangesloten) vervangen worden door de geleverde afdichtpluggen. U dient de gebruiker hierover te informeren. Indien de gebruiker bovenstaande montage-instructie niet opvolgt en de afdichtpluggen vervangt door de snelkoppelingen, kunnen er gevaarlijke situaties ontstaan die dan geheel voor risico van de gebruiker zijn!
- Because of the newest safety conditions, the quick couplings of the double acting valve of the tractor (the valve where the hitches hydraulics are being connected at) have to be exchanged for the supplied seal plugs. You have to inform your customer about this new fitting instruction. If your customer ignores this fitting instruction and replaces the plugs for the quick couplings, it could cause very dangerous situations, therefore it's your customers' own responsibility!
- Wegen der neuesten Sicherheitsvorschriften ist es notwendig um die Schnellkopplungen des doppelwirkenden Ventils zu ersetzen für die gelieferten Stopfen. Sie müssen Ihre Kunde hierüber informieren. Wenn Ihre Kunde diese Anweisung ignoriert und die Stopfen für die Schnellkopplungen ersetzt kann es sehr gefährliche Situationen verursachen, und ist darum auf Gefahr Ihrer Kunde!
- De nouvelles exigences dans le domaine de la sécurité n'autorisent pas à avoir des prises hydrauliques sur le même distributeur que le relevage. Lors du montage d'un relevage, vous devez remplacer les prises par les bouchons fournis. Vous êtes également tenu d'en informer l'utilisateur final. Le remplacement des bouchons par des prises, est formellement interdit, car il peut engendrer des situations dangereuses
- In een aantal gevallen kunnen de snelkoppelingen niet gedemonteerd worden en moeten de geleverde stoppen in de snelkoppeling gebracht worden. Verwijderen van de stoppen is op eigen risico van de gebruiker!
- In case it is not possible to dismount the quick couplings, the supplied plugs must be fitted into the quick couplings. Removing the plugs is your customers' own responsibility!
- Wenn die Schnellkopplungen nicht demontiert werden können müssen Sie die gelieferten Stopfen in die Schnellkopplungen stellen. Entfernen der Stopfen ist auf Gefahr Ihrer Kunde!
- Dans certains cas il se peut que le raccord rapide ne se démonte pas. Dans ce cas il faut mettre le bouchon, livré dans le kit, dans le raccord rapide

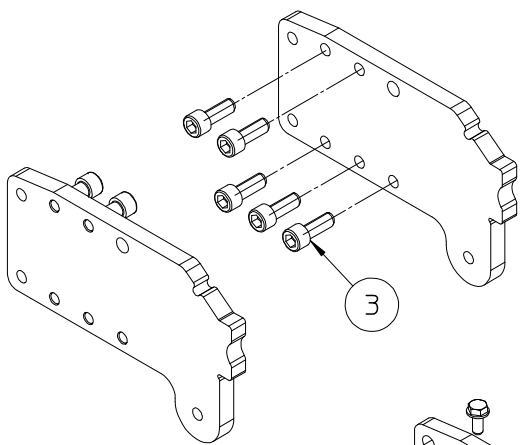
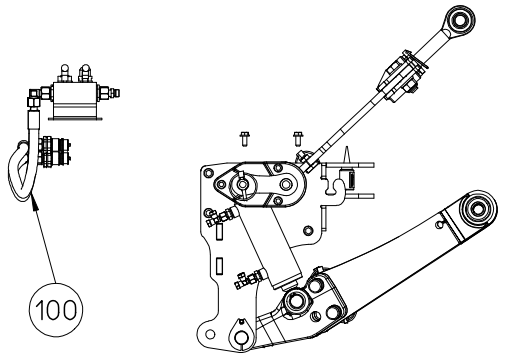




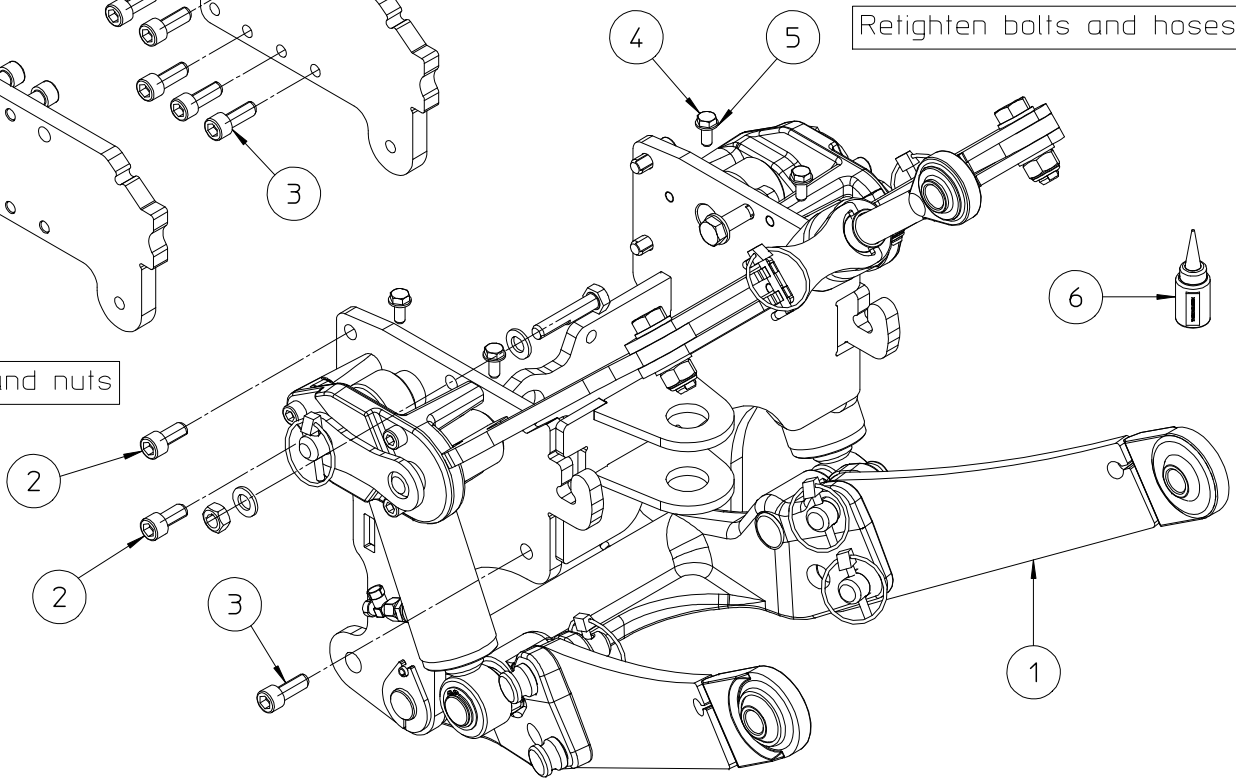
Pos	Aant	Artikelcode	Omschrijving
01	1	2002.8170	Multivalve EW/DW/STOP AC-DM
02	1	4000.6390	Afdichtplug PG M16x1.5
03	2	4000.4760	GE 12 LM 16



Disclaimer: The (intellectual property) rights and the know-how on the performed work and on all of the provided information and/or products rest with Zuidberg, unless otherwise agreed by the parties in written form. The distribution, disclosure, copying or any other use of the information and/or products provided by Zuidberg is forbidden, unless otherwise agreed by the parties or provided by the law.



Apply glue to bolts and nuts



Retighten bolts and hoses hydraulic set

WWW.ZUIDBERG.COM			designed:	EJ	15/05/2008	1404511 B			A3	
			checked:	MC	17/03/2014					
			released:	JM	17/03/2014					
			weight (kg)							
			LIN_KUB_L5040-L5740_CAT0-1_10KN_AS							
B	JM	2014/02/10	Pos	Qty	Description	Article code	OEM code	Remarks		
A	FA	2008/09/08	1	1	LIN_U_KUB_L5040-L5740_CAT0-1_AS	6050724 B				
Rev	USR	Date	2	4	SOCKET_SCREW_M12X25_8.8_ZN_TL	7101069 0		87 Nm		
			3	12	SOCKET_SCREW_M12X30_8.8_ZN	7101017 0		87 Nm		
			4	4	BOLT_M8X20_8.8_ZN	7000855 0		25 Nm		
			5	4	WASHER_M8_ZN	7500745 0				
			6	1	DUNLOP_SAS_116_THREADLOCK_10ML	8000926 0				
			100	1	HYDR_KUBOTA_L40_AS	6030262 0				
			101	0	ATTENTION: HYDR/PARTS_IN_UNIT!	0000100 0				
			600	0	XXXXXXXXXXXX OPTIONS XXXXXXXXXXXX	0000112 0				
			601	0	ACCUMULATORSET_SMALL_LNK	1303063 0				
			602	0	FRONT_HYDRAULICS_NOT AVAILABLE	0000115 0				
			603	0	PUSHBAR_KIT_KUB_L5040-5740	1303232 0				
			604	0	QUICK_A-FRAME_CAT0_UNIVERSAL	1303250 A				
			605	0	ADAPTOR_CAT0-1_WALTER_ASSEMBLY	1303236 0				
			606	0	A-FRAME_CAT0_CAT1	1303255 0				

Zuidberg Techniek B.V.

1404511B: Partslist LIN KUB L5040-L5740 CAT0-1 10KN AS

Pos	Aant	Art.code	Omschrijving	Mag.code

1	1	6050724B	LIN_U_KUB_L5040-L5740_CAT0-1_	
2	4	71010690	SOCKET_SCREW_M12X25_8.8_ZN_TL	2B_CMH_PM
3	12	71010170	SOCKET_SCREW_M12X30_8.8_ZN_TL	2B_CMP_PM
4	4	70008550	BOLT_M8X20_8.8_ZN	2B_CM_TD
5	4	75007450	WASHER_M8_ZN	2B_CMTDZT
6	1	80009260	DUNLOP_SAS_116_THREADLOCK_10ML	CM09
100	1	60302620	HYDR_KUBOTA_L40_AS	1s
101	0	00001000	ATTENTION:_HYDR/PARTS_IN_UNIT!	0
600	0	00001120	XXXXXXXXXX OPTIONS XXXXXXXXXXXX	0
601	0	13030630	ACCUMULATORSET_SMALL_LNK	TL01I
602	0	00001150	FRONT_HYDRAULICS_NOT AVAILABLE	
603	0	13032320	PUSHBAR_KIT_KUB_L5040-5740	TL
604	0	1303250A	QUICK_A-FRAME_CAT0_UNIVERSAL	TL01L
605	0	13032360	XDAPTOR_CAT0-1_WALTER_ASSEMBLY	TL01J
606	0	13032550	A-FRAME_CAT0_CAT1	TL

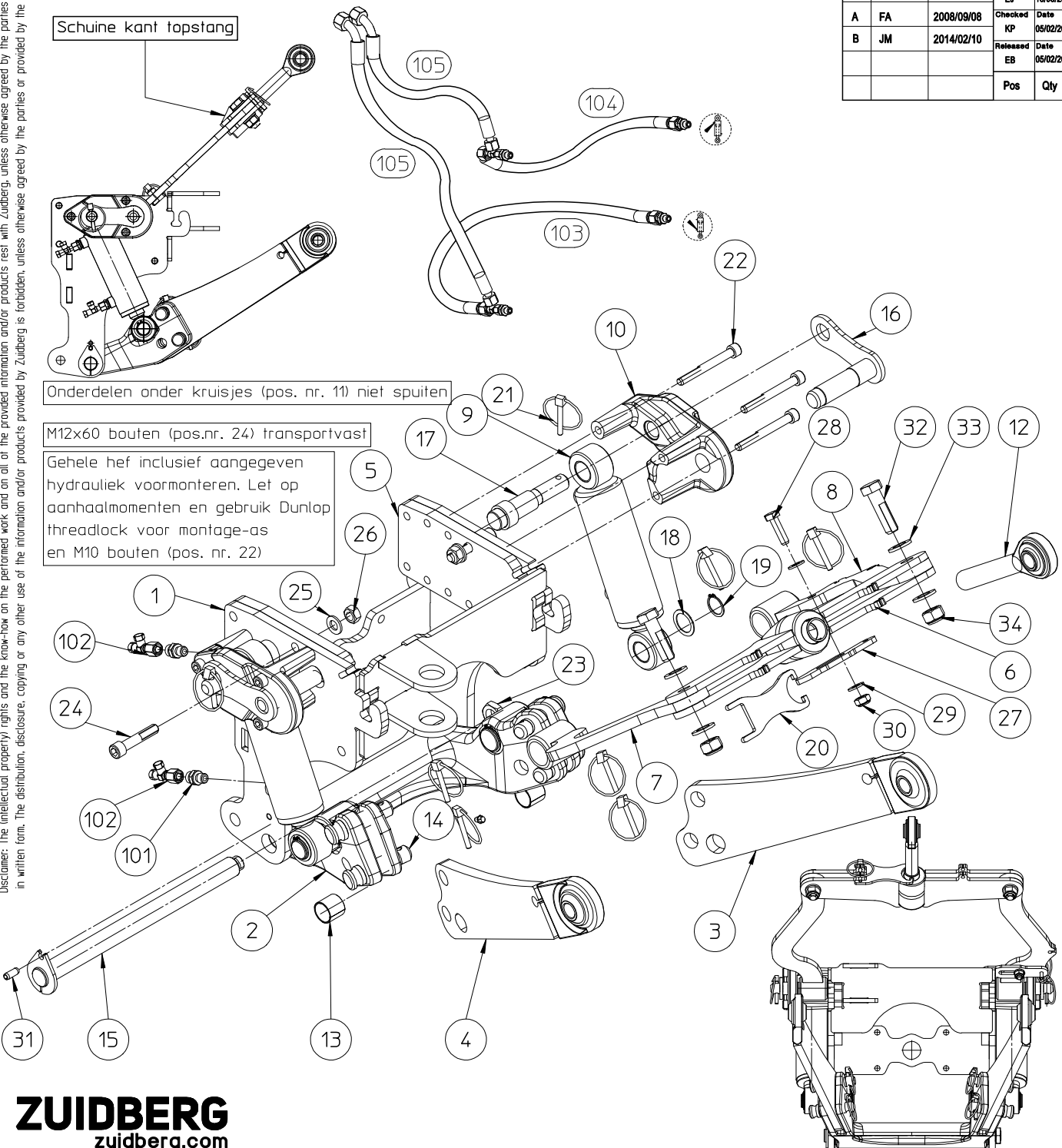
Disclaimer: The (intellectual property) rights and the know-how on the performed work and on all of the provided information and/or products rest with Zuidberg, unless otherwise agreed by the parties in written form. The distribution, disclosure, copying or any other use of the information and/or products provided by Zuidberg is forbidden, unless otherwise agreed by the parties or provided by the law.

1
2
3
4

Schuine kant topstang

Onderdelen onder kruisjes (pos. nr. 11) niet spuiten

M12x60 bouten (pos.nr. 24) transportvast
Gehele hef inclusief aangegeven hydrauliek voormonteren. Let op aanhaalmomenten en gebruik Dunlop threadlock voor montage-as en M10 bouten (pos. nr. 22)



Rev		USR	Date		Designed EJ	Date 15/06/2008	Part name		Part number		Revision
A	FA		2008/09/08		Checked KP	Date 05/02/2019	LIN_U_KUB_L5040-L5740_CAT0-1_AS		6050724		B
B	JM		2014/02/10		Released EB	Date 05/02/2019	Remark		Weight(kg)	Project number	Sheet 1 / 1
					Pos	Qty	Description	Article code	OEM Code	Remarks	
1	1		MNTFR_WLD_KUB_L5040-5740					2008734	C		
2	1		ASSEMBLE_LINK_FRAME_CAT0_CAT1					2008689	A		
3	1		LIFTARM_CAT0_CAT1_LEFT_WALT					5010105	0		
4	1		LIFTARM_CAT0_CAT1_RIGHT_WALT					5010106	0		
5	2		BT_SPACER_KUBOTA_L5040-L5740					2008733	A		
6	1		TOPLINK_TOP_CAT0-1_MODIFIED					2009091	A		
7	1		TOPLINK_WELD_KUB_L40_RIGHT					2008849	A		
8	1		TOPLINK_WELD_KUB_L40_LEFT					2008850	A		
9	2		CYL_050x030x100_241_M12_10KN_S5					9002030	0		
10	2		CYLINDER_TOPLINK_MOUNTING					2008496	C		
11	0		XXXXXXXXXXXXXXXXXXXXXXXXXXXX					0000110	0		
12	1		BULLET_THREADED_TOPLNK_M24_125					2008804	0		
13	2		BEARING_BUSH_PAP_2525_P10					9001175	0		
14	4		PIVOT_PIN_LIFTFRAME_CAT0_CAT1					2008500	B	C45	
15	1		PIVOT_SHAFT_LF_300_FINAL					2008498	0		
16	2		ASSEMBLE_TOPLINK_PIN_WELD					2008684	A		
17	2		CYLINDER_PIN					2008495	B		
18	4		RING_25.5X35X1_RVS					2006732	0	RVS	
19	2		RETAINING_RING_A25					7500787	0		
20	1		CUT_ADJUST_TOPLINK_CAT0-1_5MM					5511031	0	SIS2-3(S355J2G3)	
21	8		LOCKING_CLIP_06					7500836	0		
22	6		SOCKET_SCREW_M10X90_8.8_ZN					7201005	0	50 Nm	
23	1		NUT_M20X1.5_LOW					7501169	0	200Nm	
24	2		SOCKET_SCREW_M12X60_8.8_ZN					7101391	0	87 Nm	
25	2		WASHER_M12_ZN					7500751	0		
26	2		NUT_M12_ZN					7500789	0		
27	1		CUT_STORE_TOPLINK_KUB_6MM					5511032	0	SIS2-3(S355J2G3)	
28	1		BOLT_M10X35_8.8_ZN					7000834	0	50 Nm	
29	2		WASHER_M10_ZN					7500805	0		
30	1		NUT_M10_ELVZ_SELF-LOCKING					7501020	0		
31	1		SPRING_PIN_8X20_ZN					7501205	0		
32	2		BOLT_M16X55_8.8_ZN					7001073	0	210 Nm	
33	4		WASHER_M16_ZN					7500709	0		
34	2		NUT_M16_ELVZ_SELF-LOCKING					7501303	0		
100	0		ATTENTION: HYDR/PARTS_IN_UNITI					0000100	0		
101	4		GE_8LM12					4000409	0	40 Nm	
102	2		T-PIECE EVL 8 L					4000492	0		
103	1		HP_06_NR08_572_NR08					3000619	0		
104	1		HP_06_NR08_550_NR09					3100350	0		
105	2		HP_06_NR08_3550_NR09					3100341	0		
500	0		XXXXXXXXXXXXXXXXXXXXXXXXXXXX					0000111	0		
501	0		COLOR_NH_GREY					V000012	0		

Zuidberg Techniek B.V.

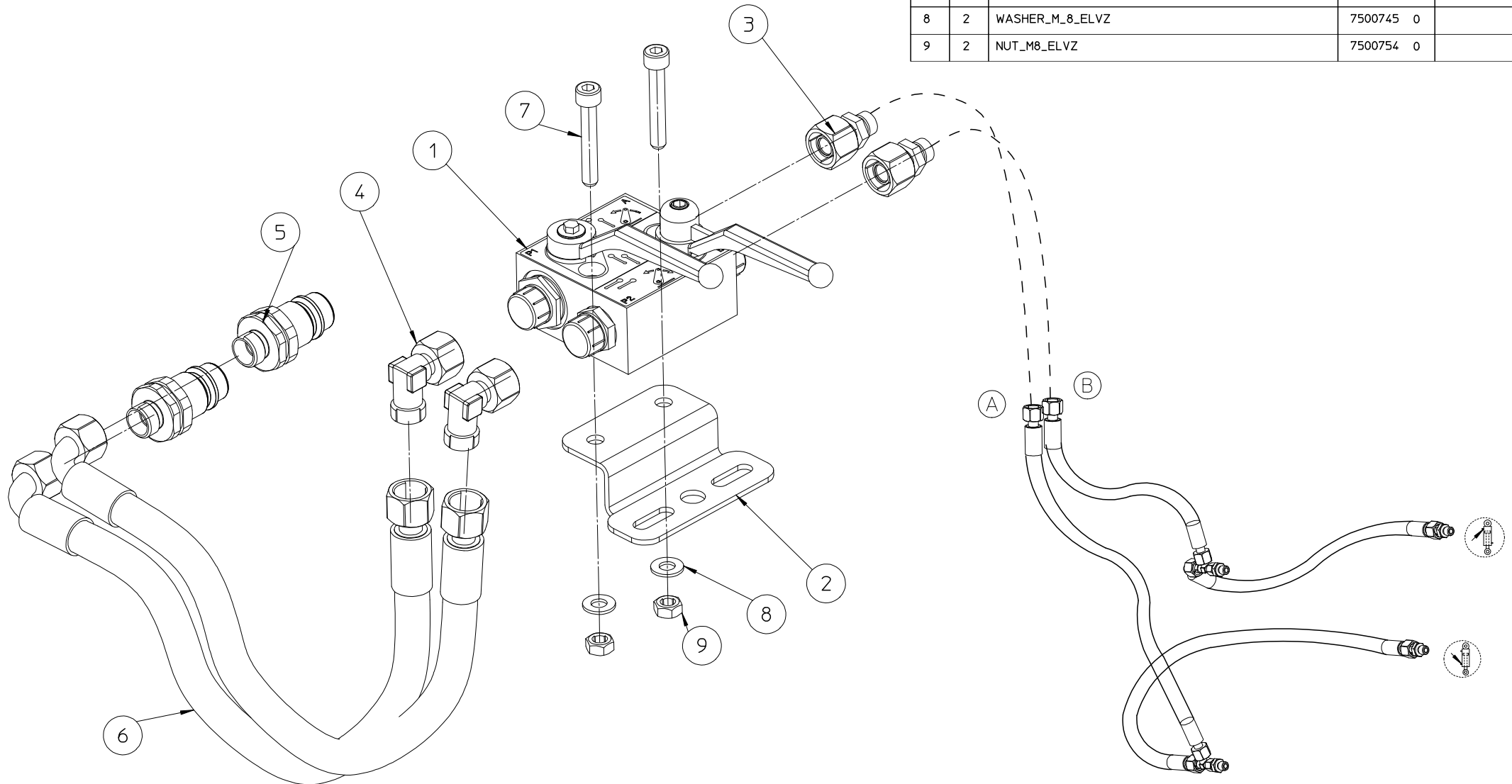
6050724B: Partslist LIN U KUB L5040-L5740 CAT0-1 AS

Pos	Aant	Art.code	Omschrijving	Mag.code					

1	1	2008734C	MNTFR_WLD_KUB_L5040-5740	SP	29	2	75008050	WASHER_M10_ZN	2B_CMTD_ZT
2	1	2008689A	ASSEMBLE_LINK_FRAME_CAT0_CAT1	SP	30	1	75010200	NUT_M10_ELVZ_SELF-LOCKING	2B_CMHTDZT
3	1	50101050	LIFTARM_CAT0_CAT1_LEFT_WALT	SP12E	31	1	75012050	SPRING_PIN_8X20_ZN	2B_CMH
4	1	50101060	LIFTARM_CAT0_CAT1_RIGHT_WALT	SP12E	32	2	70010730	BOLT_M16X55_8.8_ZN	2B_CMH
5	2	2008733A	BT_SPACER_KUBOTA_L5040-L5740	CM04B03	33	4	75007090	WASHER_M16_ZN	2B_CM_ZT
6	1	2009091A	TOPLINK_TOP_CAT0-1_MODIFIED	SP12C	34	2	75013030	NUT_M16_ELVZ_SELF-LOCKING	2B_CMH
7	1	2008849A	TOPLINK_WELD_KUB_L40_RIGHT	SP12C	100	0	00001000	ATTENTION:_HYDR/PARTS_IN_UNIT!	0
8	1	2008850A	TOPLINK_WELD_KUB_L40_LEFT	SP12C	101	4	40004090	GE_8LM12	8B4C/43A05
9	2	90020300	CYL_050x030x100_241_M12_10KN_	SP04	102	2	40004920	T-PIECE EVL 8 L	CM08B02
10	2	2008496C	CYLINDER_TOPLINK_MOUNTING	SP12C	103	1	30006190	HP_06_NR08_572_NR08	CM08PERS
11	0	00001100	XXXXXXXXXXXXXXXXXXXXXXXXXXXXXXX	0	104	1	31003500	HP_06_NR08_550_NR09	slangpers
12	1	20088040	BULLET_THREADED_TOPLNK_M24_125	CM04A04	105	2	31003410	HP_06_NR08_3550_NR09	CM08PERS
13	2	90011750	BEARING_BUSH_PAP_2525_P10	CM02I03B/L	500	0	00001110	XXXXXXXXXXXXXXXXXXXXXXXXXXXXXXX	0
14	4	2008500B	PIVOT_PIN_LIFTFRAME_CAT0_CAT1	CM04A03	501	0	V0000120	COLOR_NH_GREY	SP
15	1	20084980	PIVOT_SHAFT_LF_300_FINAL	CM_Y					
16	2	2008684A	ASSEMBLE_TOPLINK_PIN_WELD	CM04A03E					
17	2	2008495B	CYLINDER_PIN	CM04A03B					
18	4	20067320	RING_25.5X35X1_RVS	2B_CMH					
19	2	75007870	RETAINING_RING_A25	2B_CMH_PM					
20	1	55110310	CUT_ADJUST_TOPLINK_CAT0-1_5MM	CM03A02					
21	8	75008360	LOCKING_CLIP_06	CM02H04C					
22	6	72010050	SOCKET_SCREW_M10X90_8.8_ZN	2B_CMH					
23	1	75011690	NUT_M20X1.5_LOW	2B_CMH					
24	2	71013910	SOCKET_SCREW_M12X60_8.8_ZN	PM16C					
25	2	75007510	WASHER_M12_ZN	2B_CMTD/ZT					
26	2	75007890	NUT_M12_ZN	2B_CM					
27	1	55110320	CUT_STORE_TOPLINK_KUB_6MM	CM03A04					
28	1	70008340	BOLT_M10X35_8.8_ZN	2B_CM					

ASSEMBLY

SD / PDM		Opm.:		gec.:	EJ	15/05/2008
				get.:	EJ	15/05/2008
Pos	Aant	Omschrijving	Art.Nummer		Materiaal	
1	1	MULTIVALVE_PRE-MOUNTED	0000200	1		
2	1	MULTIVALVE_BRACKET	2005772	B	Si37-2(Si235JR)	
3	2	KOR 12/ 8 L	4000434	0		
4	2	ELBOW_EVW_12L	4000423	0		
5	2	QUICK_COUPLER. VD 12L 10	4000422	0		
6	2	TA2_T10_PIPE-12_A-S_400MM	3000323	0		
7	2	SOCKET_SCREW_M_8X50__8.8__ELVZ	7100769	0		
8	2	WASHER_M_8_EL VZ	7500745	0		
9	2	NUT_M8_EL VZ	7500754	0		



Zuidberg Techniek B.V.

60302620: Partslist HYDR KUBOTA L40 AS

Pos	Aant	Art.code	Omschrijving	Mag.code
1	1	00002001	MULTIVALVE_PRE-MOUNTED	CM/E2
2	1	2005772B	MULTIVALVE_BRACKET	CM07D04B
3	2	40004340	KOR_12L_8L	CM8A3H/43B
4	2	40004230	ELBOW_EVW_12L	8A3E/43B04
5	2	40004220	QUICK_COUPLER. VD 12L	10 CM08A02/ZT
6	2	30003230	HP_10_NR02_450_NR03	CM47B03D
7	2	71007690	SOCKET_SCREW_M8X50_8.8_ZN	2B_CMH_TD
8	2	75007450	WASHER_M8_ZN	2B_CMTDZT
9	2	75007540	NUT_M8_ZN	2B_CM_TD