

### Disassembling Gear Box [RCK54-23BX, RCK60B-23BX]

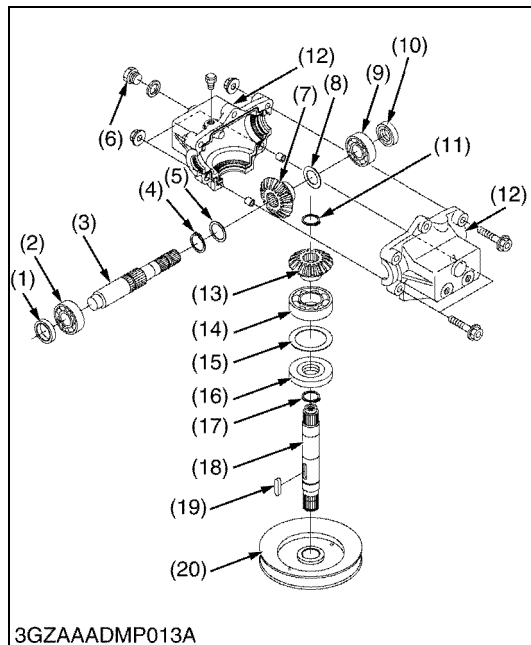
1. Unscrew the drain plug (1), and drain the gear box oil.
2. Remove the center pulley (20) with a puller, and remove the feather key (18) on the bevel gear shaft (19).
3. Remove the gear box cap (5).
4. Remove the oil seal (10), internal snap ring (11) and shim (12).
5. Tap out the pinion shaft (14) with the ball bearing (13), and remove the bevel gear (1).
6. Remove the ball bearing (3) and shims (if installed).
7. Remove the external snap ring (6), and draw out the bevel gear shaft (19).
8. Remove the bevel gear (7), ball bearing (8), shim (9) and oil seal (17).

#### (When reassembling)

- Replace the oil seals (10), (17) and gear box cap (8) with new ones.
- Check the backlash and turning torque.  
If not proper, adjust with the shims.  
(See page 7-S10.)

- |                                  |                         |
|----------------------------------|-------------------------|
| (1) 19T Bevel Gear (RCK54-23BX)  | (12) Shim               |
| 18T Bevel Gear (RCK60B-23BX)     | (13) Oil Seal           |
| (2) Breather                     | (14) Internal Snap Ring |
| (3) Gear Box                     | (15) Shim               |
| (4) Ball Bearing                 | (16) Ball Bearing       |
| (5) Shim                         | (17) Pinion Shaft       |
| (6) Internal Snap Ring           | (18) Oil Filler Plug    |
| (7) Gear Box Cap                 | (19) Drain Plug         |
| (8) Gear Box Cap                 | (20) Oil Seal           |
| (9) External Snap Ring           | (21) Bevel Gear Shaft   |
| (10) 16T Bevel Gear (RCK54-23BX) | (22) Feather Key        |
| 17T Bevel Gear (RCK60B-23BX)     | (23) Center Pulley      |
| (11) Ball Bearing                |                         |

W1018143



### Disassembling Gear Box (RCK54P-23BX)

1. Unscrew the drain plug (6), and drain the gear box oil.
2. Remove the center pulley (20) with a puller.
3. Remove the gear box.
4. Open the gear box.
5. Remove the input shaft (3) and the blade shaft (18).
6. Disassembling the input shaft (3) and the blade shaft (18).

#### (When reassembling)

- Replace the oil seals (1), (10), (16) and gear box caps with new ones.
- Check the backlash and turning torque.  
If not proper, adjust with the shims.
- After cleaning dirty and gear box oil and the gear box surface, apply the liquid gasket.

|                   |                |   |
|-------------------|----------------|---|
| Tightening torque | Gear box screw | 24 to 27 N·m<br>2.4 to 2.8 kgf·m<br>17 to 20 lbf·ft |
|-------------------|----------------|---|

- |                       |                        |
|-----------------------|------------------------|
| (1) Oil Seal          | (11) External Cir Clip |
| (2) Ball Bearing      | (12) Bevel Gear Case   |
| (3) Input Shaft       | (13) Bevel Gear        |
| (4) External Cir Clip | (14) Ball Bearing      |
| (5) Shim              | (15) Shim              |
| (6) Drain Plug        | (16) Oil Seal          |
| (7) Bevel Gear        | (17) External Cir Clip |
| (8) Shim              | (18) Blade Shaft       |
| (9) Ball Bearing      | (19) Feather Key       |
| (10) Oil Seal         | (20) Center Pulley     |

W1015954