

INSTALLATION INSTRUCTIONS  
AND  
REPAIR PARTS INFORMATION

**WOODS**

**#9267 SUB-FRAME MOUNTING KIT**

for

mounting BH6500 to Kubota B6100HSE/D,  
B6200HSE/D, B7100HSE/D & B7200HSE/D Tractors,

Kubota B1550E/DT/HSE/HSD & B1750E/DT/HSE/HSD  
Tractors Equipped with B1640A or B1640 Loaders

and

Kubota B6200HSE, B7200HSE, B1550HSE &  
B1750HSE Tractors Equipped with DuAI 145 Loaders

**WOODS**

## TO THE DEALER:

The backhoe / sub-frame assembly and proper installation to the tractor is the responsibility of the WOODS dealer. Read manual instructions and safety rules. Make sure all items on the Pre-Delivery and Delivery Check Lists in the backhoe manual are completed before releasing equipment to the owner.

## TO THE OWNER:

Read these mounting instructions before remounting your backhoe and sub-frame. The information presented will prepare you to do a better and safer job. Keep this document handy for ready reference. Require all operators to read the backhoe manual carefully and become acquainted with all the adjustment and operating procedures before attempting to operate. Replacement manuals can be obtained from your dealer or by calling 1-800-319-6637.

The backhoe and mounting kit you have purchased has been carefully engineered and manufactured to provide dependable and satisfactory use. Like all mechanical products, it will require cleaning and upkeep. Observe all safety information in this document, the backhoe and tractor manuals, and all safety decals on the backhoe and tractor.

For service, your authorized WOODS dealer has trained mechanics, genuine WOODS service parts, and the necessary tools and equipment to handle all your needs.

Use only genuine WOODS service parts. Substitute parts will void the warranty and may not meet standards required for safe and satisfactory operation. Record the model and serial number of your mounting kit and provide it to your dealer when requesting repair parts.

### **Model: #9267 Sub-Frame Mounting Kit**

#### **Serial Number:**

(Located inside sub-frame channel rear of cross tube) \_\_\_\_\_

Provide this information to your dealer to obtain correct repair parts.

Throughout this manual, the term **IMPORTANT** is used to indicate that failure to observe can cause damage to equipment. The terms **CAUTION**, **WARNING** and **DANGER** are used in conjunction with the Safety-Alert Symbol, (a triangle with an exclamation mark), to indicate the degree of hazard for items of personal safety.



The Safety-Alert Symbol means ATTENTION! BECOME ALERT! YOUR SAFETY IS INVOLVED!



**CAUTION**

Denotes a reminder of safety practices or directs attention to unsafe practices which could result in personal injury if proper precautions are not taken.



**WARNING**

Denotes a hazard exists which can result in injury or death if proper precautions are not taken.



**DANGER**

Denotes an extreme intrinsic hazard exists which would result in high probability of death or irreparable injury if proper precautions are not taken.

# MOUNTING INSTRUCTIONS

Safety is a primary concern in the design and manufacture of our products. Unfortunately, our efforts to provide safe equipment can be wiped out by a single careless act of an operator.

In addition to the design and configuration of equipment, hazard control and accident prevention are dependent upon the awareness, concern, prudence and proper training of personnel involved in the operation, transport, maintenance and storage of equipment.

It has been said *"The best safety device is an informed, careful operator."* We ask you to be that kind of an operator.

This backhoe rigid mounting sub-frame kit is designed for mounting WOODS BH6500 on Kubota B6100HSE/D, B6200HSE/D, B7100HSE/D and B7200HSE/D tractors and B1550E/DT/HSE/HSD and B1750E/DT/HSE/HSD tractors equipped with B1640A or B1640 loaders. B1500 and B1750 tractors are required to be equipped with B1072 backhoe ROPS. See your Kubota dealer.

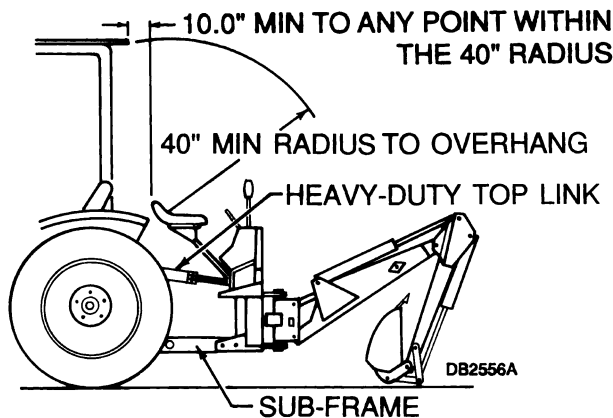


Figure 1. Sub-Frame Clearance

## **! DANGER**

■ The sub-frame mount is designed to provide secure mounting and adequate operator clearance when properly installed. Check clearance dimensions shown in figure 1 to be sure you have installed sub-frame correctly. Do not operate backhoe unless there is adequate clearance and all mounting instructions in this manual have been followed. Failure to check and comply with these instructions may result in serious injury or death.

## **! DANGER**

■ The only time the backhoe may be operated from a position other than the operator seat is during backhoe attachment and removal. Operator must:

- Read Operator's Manual instructions on attaching and removing backhoe and use extreme care.
- Engage swing lock to prevent boom rotation.
- Always stand rearward of backhoe stabilizer arms or along side of tractor to avoid being trapped should the boom swing control be accidentally activated.

## **! CAUTION**

■ If you do not understand any part of this manual and need assistance, see your dealer.

■ Keep hands and body away from pressurized lines. Use paper or cardboard, not body parts to check for leaks. Hydraulic fluid (oil) under pressure will easily penetrate skin and can cause serious injury or death.

■ Always wear relatively tight and belted clothing to avoid entanglement in moving parts. Wear sturdy, rough-soled work shoes and protective equipment for eyes, hair, hands, hearing and head.

## **! WARNING**

■ Safety instructions are important! Read this manual and the Woods Backhoe manual and follow all safety rules and safety decals. (Replacement manuals are available from dealer or call 1-800-319-6637.) Failure to follow instructions or safety rules can result in serious injury or death.

■ This backhoe sub-frame is only for mounting WOODS 6500/7500 series backhoes on Kubota B6100HSE/D, B6200HSE/D, B7100HSE/D and B7200HSE/D tractors and B1550E/DT/HSE/HSD and B1750E/DT/HSE/HSD tractors equipped with B1640A or B1640 loaders. Use on any other backhoe or tractor, or one not equipped as specified, may result in serious injury or death.

■ Make sure that all operating and service personnel know that in the event hydraulic fluid penetrates skin, it must be surgically removed within a few hours by a doctor familiar with this form of injury, or gangrene, serious injury or death can result. CONTACT A PHYSICIAN IMMEDIATELY IF SKIN PENETRATION OCCURS.

## WARNING

■ Make sure all hydraulic hoses and fittings are in good condition and not leaking before starting tractor or using equipment. Check and route hoses carefully to prevent damage. Hoses must not be twisted, bent sharply, kinked, frayed, pinched, or come into contact with any moving parts. Operate moveable components through full operational range to check clearances. Replace any damaged hoses immediately.

■ Remove seat and upper support assembly before installing or removing backhoe from tractor. Failure to comply may result in equipment failure and/or personal injury.

■ Always use special heavy-duty top link provided with sub-frame, original equipment high-strength tractor top link pin, and 1" NC x 5 grade 5 hex head cap screw and hex locknut to attach top link to tractor and backhoe.

■ A minimum 25% of tractor and equipment weight must be on tractor front wheels with backhoe in transport position. Without this weight, tractor could tip over causing personal injury or death. The weight may be attained with a front end loader, front wheel weights, ballast in tires or front tractor weights. When attaining the minimum 25% weight on the front wheels, you must not exceed the Roll Over Protection Structure (ROPS) weight certification. Weigh the tractor and equipment. Do not estimate.

■ Before working on backhoe, extend boom and dipperstick and place bucket on ground. Make sure that all system pressure has been relieved by operating controls before maintenance, service or disconnecting any hydraulic lines.

■ Keep all persons away from operator control area while performing adjustments, service or maintenance.

Refer to the WOODS BH6500/7500 series Operator's Manual for backhoe assembly instructions.

For the purpose of installing the sub-frame, right, left, forward and rearward directions are determined from the operator's position facing forward in the tractor seat.

## TRACTOR PREPARATION

### (Figure 2)

Remove mid-mount mower and brackets if installed.

Block front tires.

Place jack under rear tractor housing. Slide one rear tires out as far as possible. Loosen set screw located at the bottom center of lift arm pin (4). Remove Klik pin (3) and slide pin outward, removing spacers (2), lift arms (1), sway chain bracket (5) and connecting links (7) from tractor. Reposition lift arm pin (4) and tighten set screw. place tire in original position, secure and remove jack.

All parts removed should be stored for reinstallation on tractor when putting 3-point hitch back on.

DC1700

1. Lift arm
2. Spacer
3. Klik pin
4. Lift arm pin
5. Sway chain bracket
6. Drawbar
7. Connecting link
8. Top link bracket
9. Sway chains

**Figure 2.** Tractor Preparation

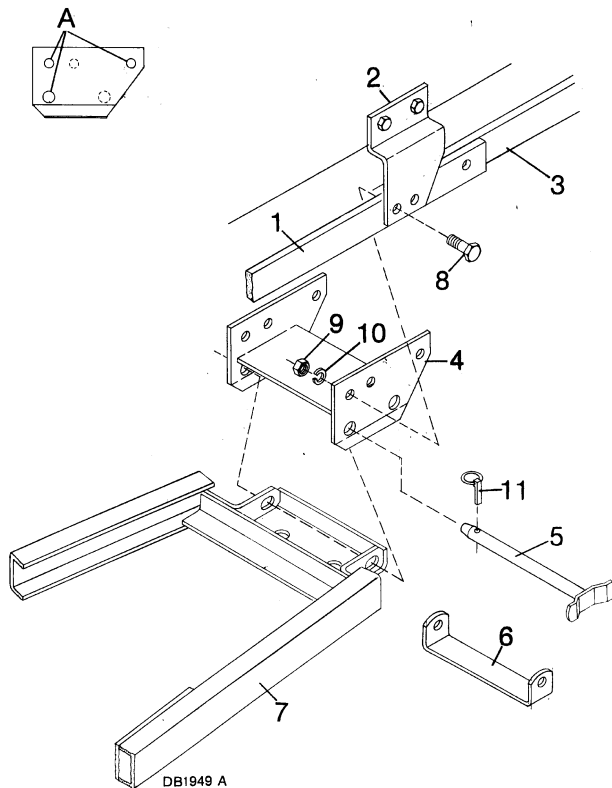
## Front Mounting Bracket Installation

### B6100 & B7100 Tractors (Figure 3)

Remove front loader support bracket (6) and save hardware for installing backhoe front mounting bracket (4).

When installing on B1600HSE/D & B7100HSE/D, mount bracket with diagonal forward as shown in "A", using top holes indicated to insert cap screws (8). The bottom holes indicated will be used to install front mounting pin (5). Do not tighten hardware at this time.

Install front mounting bracket (4) in position indicated for your tractor. Install cap screws (8), lockwashers (10) and nuts (9), but do not tighten. Use existing hardware from front loader brackets.



1. Rear front loader support
2. Loader support bracket
3. Forward front loader support
4. Backhoe front mounting bracket
5. Front mounting pin
- \*6. Front loader support bracket
7. Backhoe sub-frame
- \*8. Hex head cap screw
- \*9. Nut
- \*10. Lockwasher
11. Klik pin

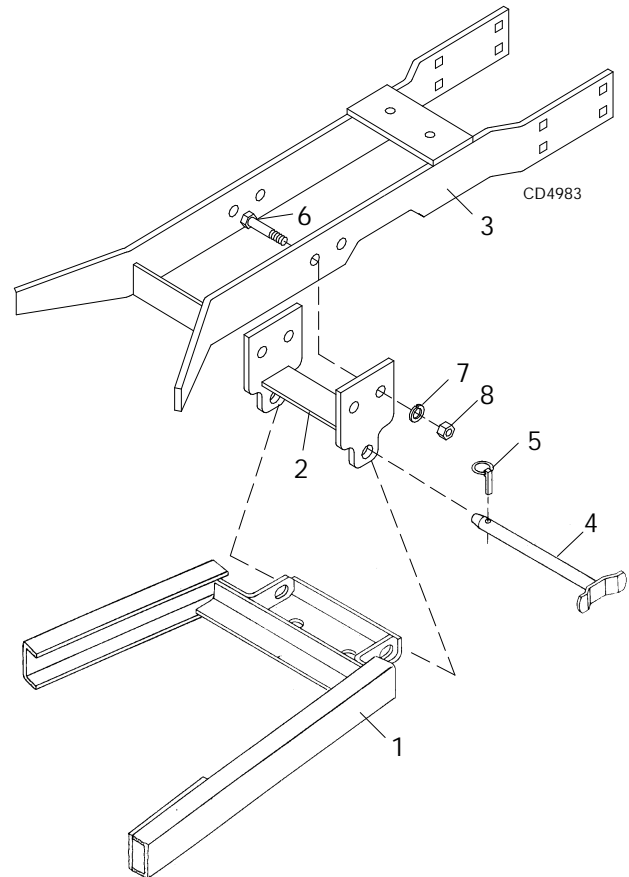
\*Loader parts

**Figure 3.** Front Mounting Bracket Installation for B6100 & B7100 Tractors

### HST Models B6200, B7200, B1550 and B1750 with DuAI 145 Loader

Attach front mount (2) to loader extension rail (3). Install cap screw (6), lockwashers (7) and nuts (8), but do not tighten.

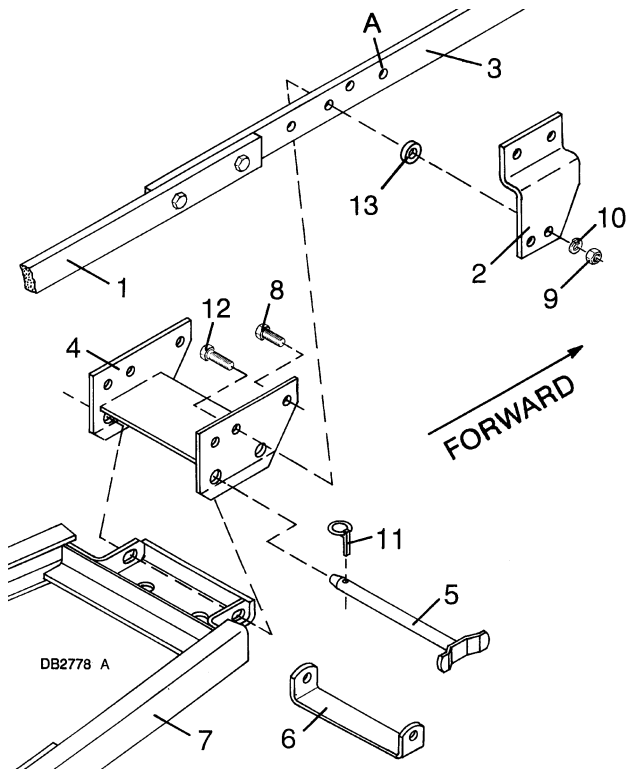
Attach front mount (2) to sub-frame (1) and secure with front mounting pin (4) and klik pin (5).



1. Backhoe sub-frame
2. Front mount
3. Loader extension rail
4. Front mounting pin
5. Klik pin
6. 5/8 x 1-1/2" Hex head cap screw
7. 5/8" Lockwasher
8. 5/8" Hex nut

**Figure 4.** Front Mounting Bracket Installation for HST Models B6200, B7200, B1550 and B1750 with DuAI 145 Loader

**B1550, B1750, B6200 & B7200  
Hydrostatic Models Only**



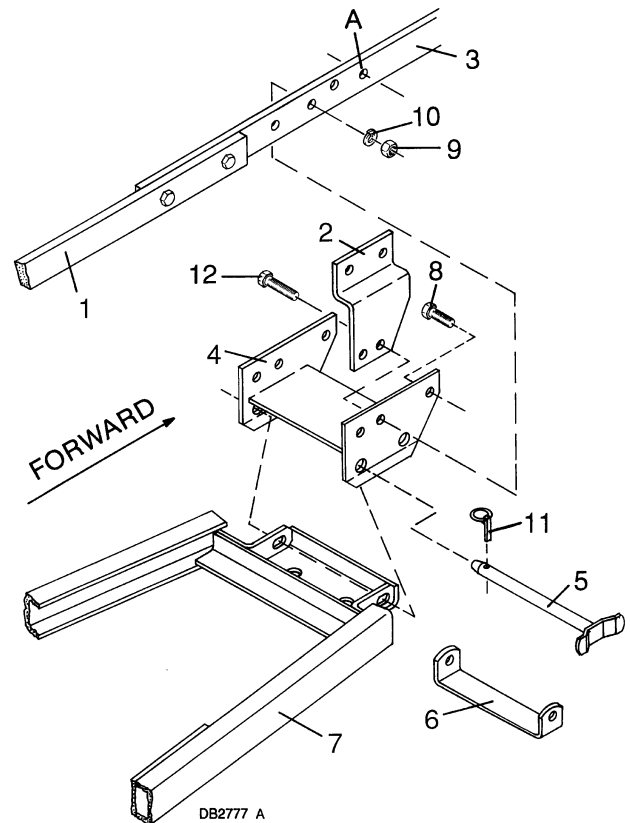
1. Rear front loader support
2. Loader support bracket
3. Forward front loader support
4. Backhoe front mounting bracket
5. Front mounting pin
- \* 6. Front loader support bracket
7. Backhoe sub-frame
- \* 8. 5/8 x 1-1/2" Hex head cap screw
- \*\* 9. 5/8" Nut
- \*\* 10. 5/8" Lockwasher
11. 3/16 x 1" Klik pin
12. 5/8 x 2" Hex head cap screw
13. Hydrostatic spacer sleeve

\*Loader parts

\*\*Two are loader parts and two are furnished with sub-frame

**Figure 5. Front Mounting Bracket Installation for  
B1550, B1750, B6200 & B7200  
Hydrostatic Tractors**

**B1550 & B1750 Gear Drive Models Only**



1. Rear front loader support
2. Loader support bracket
3. Forward front loader support
4. Backhoe front mounting bracket
5. Front mounting pin
- \* 6. Front loader support bracket
7. Backhoe sub-frame
- \* 8. 5/8 x 1-1/2" Hex head cap screw
- \*\* 9. 5/8" Nut
- \*\* 10. 5/8" Lockwasher
11. 3/16 x 1" Klik pin
12. 5/8 x 2" Hex head cap screw

\*Loader parts

\*\*Two are loader parts and two are furnished with sub-frame

**Figure 6. Front Mounting Bracket Installation for  
B1550 & B1750 Gear Drive Tractors**

**B1550, B1750, B6200 & B7200 Tractors  
Hydrostatic Drive Models (Figure 5)**

Remove front loader support bracket (6) and save hardware for installing backhoe front mounting bracket (4).

Remove hardware attaching loader support brackets (2) to tractor and front loader support (3).

Insert cap screw (12) through center hole of front mounting bracket (4), place spacer (13) over cap screw then place loader support bracket (2) over cap screw. Secure with lockwasher (10) and nut (9). Do not tighten.

Install hardware attaching loader support brackets (2) to tractor. It will be necessary to drill holes on **1640A** loaders with serial number 24002953 and below (see Figure 5, hole "A") to attach front hole of front mounting bracket (4), to front loader support (3). Use front mounting bracket (4) as a template and drill a 5/8" hole in each front loader support (3).

Insert cap screw (8) through forward hole of each front mounting bracket (4) and front loader support (3). Secure with lockwasher (10) and nut (9). Do not tighten.

#### **B1550 & B1750 Gear Drive Models (Figure 6)**

Remove front loader support bracket (6) and save hardware for installing backhoe front mounting bracket (4).

Remove hardware attaching loader support brackets (2) to tractor and front loader support (3).

Insert cap screw (12) through loader support bracket (2) center hole of front mounting bracket (4) and front loader support (3). Secure with lockwasher (10) and nut (9). Do not tighten.

Install hardware attaching loader support bracket (2) to tractor. On **1640A** loaders with serial number 24002953 and below, it will be necessary to drill holes (see Figure 6, hole "A") to attach front hole of front mounting bracket (4) to front loader support (3). Use front mounting bracket (4) as a template and drill a 5/8" hole in each front loader support (3).

Insert cap screw (8) through forward hole of each front mounting bracket (4) and front loader support (3). Secure with lockwasher (10) and nut (9). Do not tighten.

#### **Sub-Frame Fit Up (Figure 7)**

Slide backhoe sub-frame (3) under the tractor between rear tires and place hitch plates (6) over lift arm pins (1).

Use sleeve (10) only on older tractor models when there is a gap between the tractor casting and sub-frame hitch plates (6).

Raise the front of sub-frame (3) up and secure to front mounting bracket (7) with pin (9) and Klik pin (8).

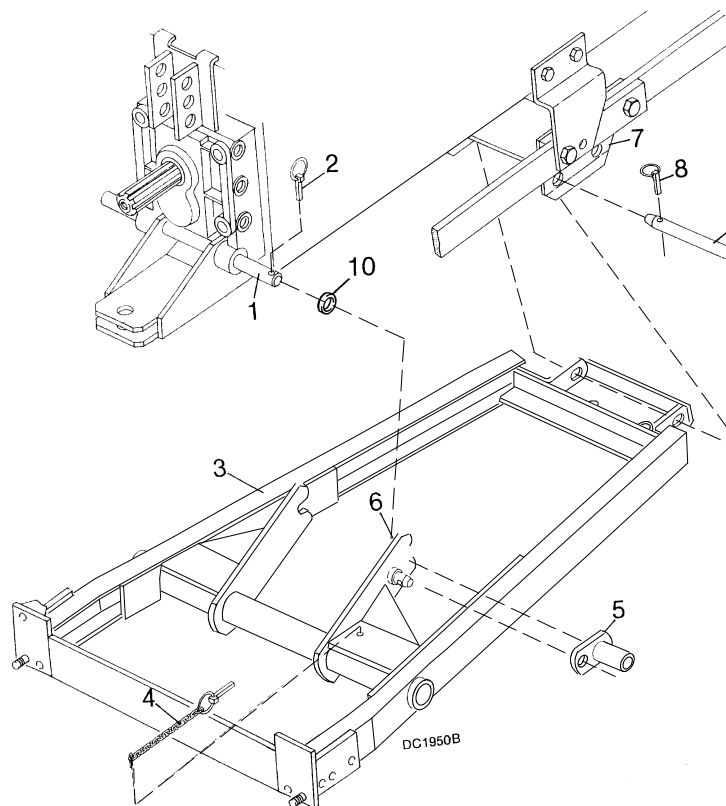
Secure hitch plates (6) to tractor by installing mounting spacers (5) over lift arms pins (1) and installing Klik pins (2). If there is a small gap between mounting spacer assembly (5) and Klik pin (2), install 7/8" ID x 1-1/4" OD x 14 gauge washer or ROPS spacer inside hitch plate (6).

Insert and spread cotter pins of Klik pin and chain assemblies (4) through hole in sub-frame as shown. Install Klik pin through hole in pin on hitch plates (6) to secure mounting spacers (5).

With sub-frame installed, tighten all hardware attaching front mounting frame (7) to front mounting bracket, front loader support and tractor.

1. Lift arm pin
- \*2. Klik pin
3. Backhoe sub-frame
4. Klik pin and chain
5. Mounting spacer assembly
6. Hitch plate
7. Front mounting bracket
8. Klik pin
9. Front mounting pin
10. Sleeve - .88 x 1.25 x .38

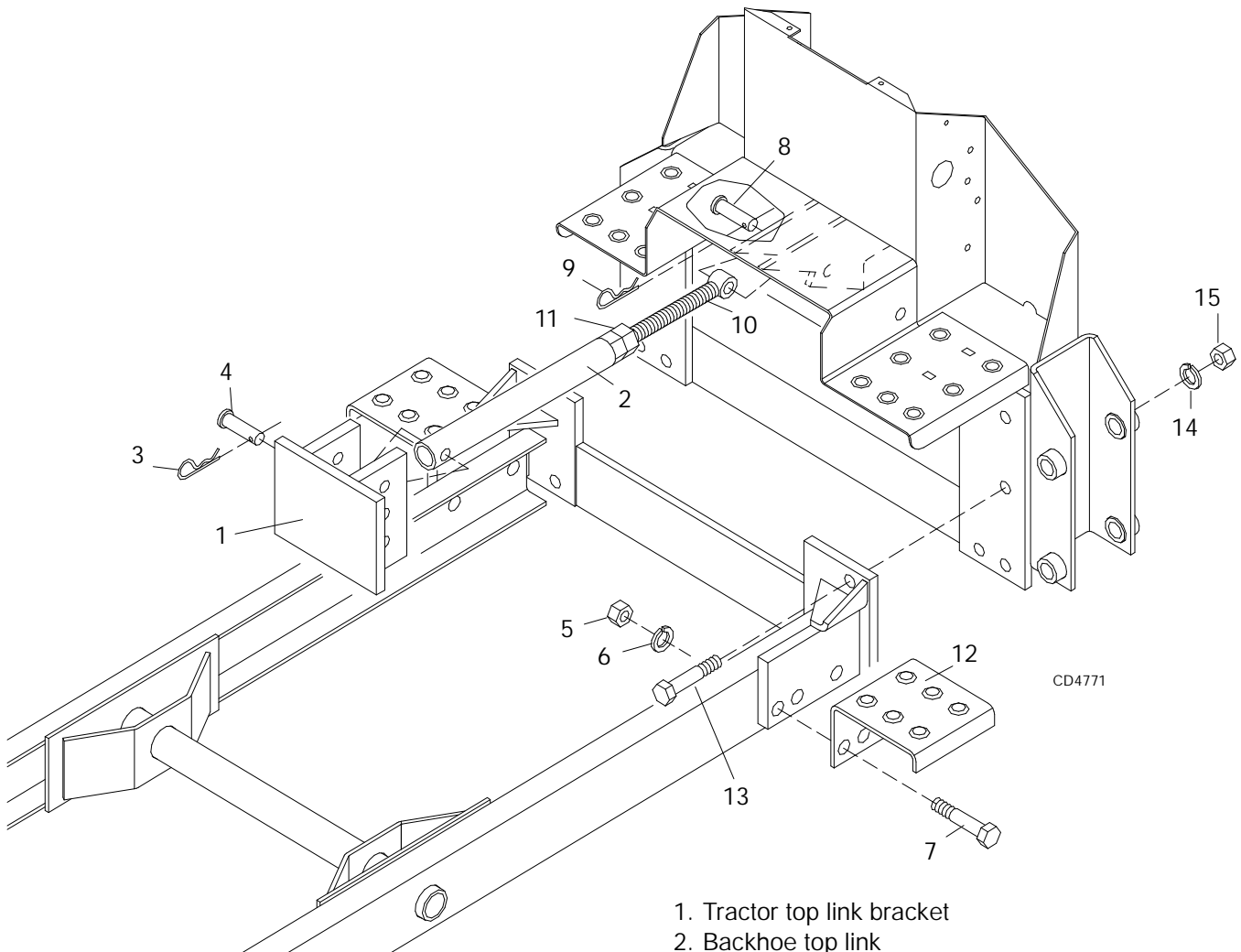
\*Tractor part



**Figure 7. Sub-Frame Fit Up**

## Sub-Frame to Backhoe Attachment (Figure 8)

With sub-frame removed from tractor, attach it to the backhoe, using four cap screws (13), six lockwashers (14) and nuts (15). Align step (12) and insert two cap screws (7) through sub-frame holes. Secure with lockwashers (6) and nuts (5).



1. Tractor top link bracket
2. Backhoe top link
3. Tractor top link pin
4. Hairpin cotter
5. 7/8 NC Hex nut
6. 7/8 NC Hex locknut
7. 7/8 NC x 2-1/2 Hex head cap screw GR5
8. 3/4 x 3-1/4" Clevis pin
9. 1/8" Safety Pin
10. Inner top link member
11. 1 NC Hex Nut
12. Step
13. 3/4 NC x 2 Hex head cap screw GR5
14. 3/4" Lockwasher
15. 3/4 NC Hex Nut

**Figure 8.** Sub-Frame to Backhoe Attachment



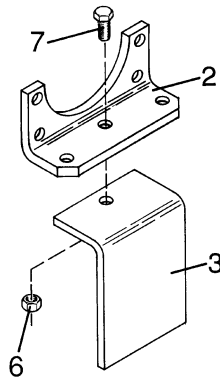
## Pump Mounting Plate Installation

### (Figure 9)

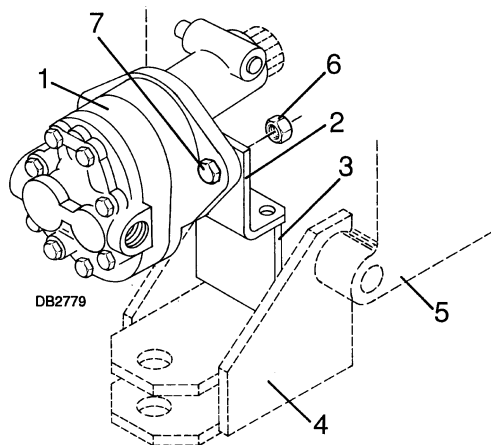
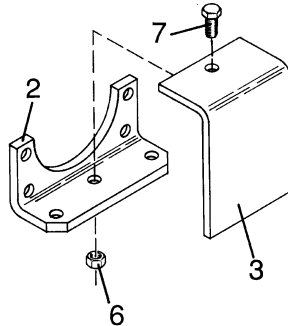
Use mounting "A" for B160, B6200, B7100 and B7200 tractors. Use mounting "B" for B1550 and B1750 tractors.

Fasten plates (2 & 3) together as shown with cap screw (7) and nut (6). Attach this assembly to pump (1) as shown.

#### MOUNTING A



#### MOUNTING B



1. Pump
2. Pump mounting plate
3. Pump position plate
4. Drawbar
5. Tractor housing
6. 7/16" Nut
7. 7/16 x 1-1/4" Hex head cap screw

Figure 9. Pump Mounting Plate Installation

## Mounting Backhoe to Tractor

### WARNING

■ Remove seat and upper support assembly before installing or removing backhoe. Failure to comply may result in equipment failure and/or personal injury.

Refer to Figure 10. Remove clevis pin or cap screw front seat upper support assembly. Lift seat and upper support assembly off of lower seat support.

Make sure backhoe hydraulic system is full. Use type "A" or "F" automatic transmission fluid, SAE 20W motor oil or #303 hydraulic fluid in this system. **Do not mix fluid types.** System capacity is approximately 5 to 5-1/2 U.S. gallons.

Check fluid level daily with dipstick incorporated in reservoir filler cap.

Back tractor over backhoe sub-frame, centering sub-frame under tractor. When tractor is close enough to backhoe, connect backhoe pump to tractor PTO. Make sure plate (3), Figure 9, is engaged in tractor drawbar to prevent pump from rotating, and slide pin on pump PTO adapter is securely locked on to tractor PTO.

### DANGER

■ The only time the backhoe may be operated from a position other than the operator seat is during backhoe attachment and removal. Operator must:

- Read Operator's Manual instructions on attaching and removing backhoe and use extreme care.
- Engage swing lock to prevent boom rotation.
- Always stand rearward of backhoe stabilizer arms or along side of tractor to avoid being trapped should the boom swing control be accidentally activated.

### CAUTION

■ Route hydraulic hoses carefully to prevent damage. Hoses must not be twisted, bent sharply, kinked, frayed, pinched, or come into contact with any moving parts. Operate moveable components through full operational range to check clearances. Replace any damaged hose immediately.

Set parking brake and block tractor tires to prevent movement. Start tractor engine and engage PTO with throttle at an idle.

Refer to Figure 7. Use backhoe hydraulics to maneuver sub-frame into position for hook-up. Lift hitch plates over lift arm pin (1). Secure with mounting spacer assemblies (5) and Klik pins (2 & 4). Then raise front of sub-frame up to engage in mounting bracket (7). Secure in place with front mounting pin (9) and Klik pin (8).

## WARNING

■ Always use special heavy-duty top link provided with sub-frame, original equipment high-strength tractor top link pin, and 1" NC x 5 grade 5 hex head cap screw and hex locknut to attach top link to tractor and backhoe.

Install top link in bottom hole of tractor top link bracket. Loosen jam nut (11), Figure 8, adjust top link as necessary to fit between tractor and backhoe, then tighten jam nut.

Attach seat assembly in one of the top two holes of the lower seat support with cap screw or clevis pin. Verify that the clearances as outlined on the **DANGER** decal on the backhoe are obtained. Failure to obtain the necessary clearances may result in serious injury or death.

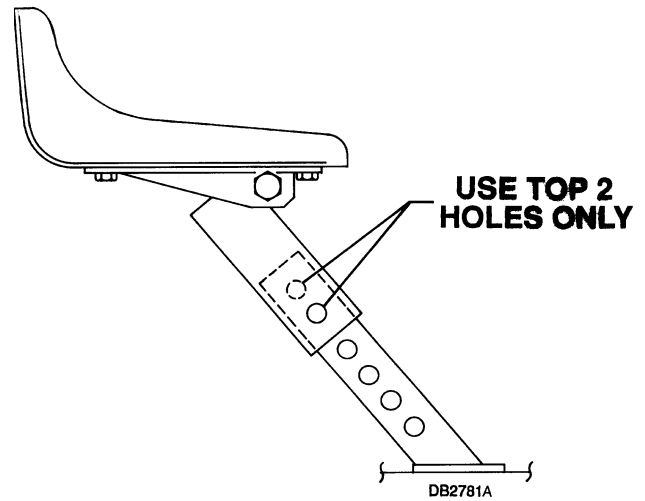
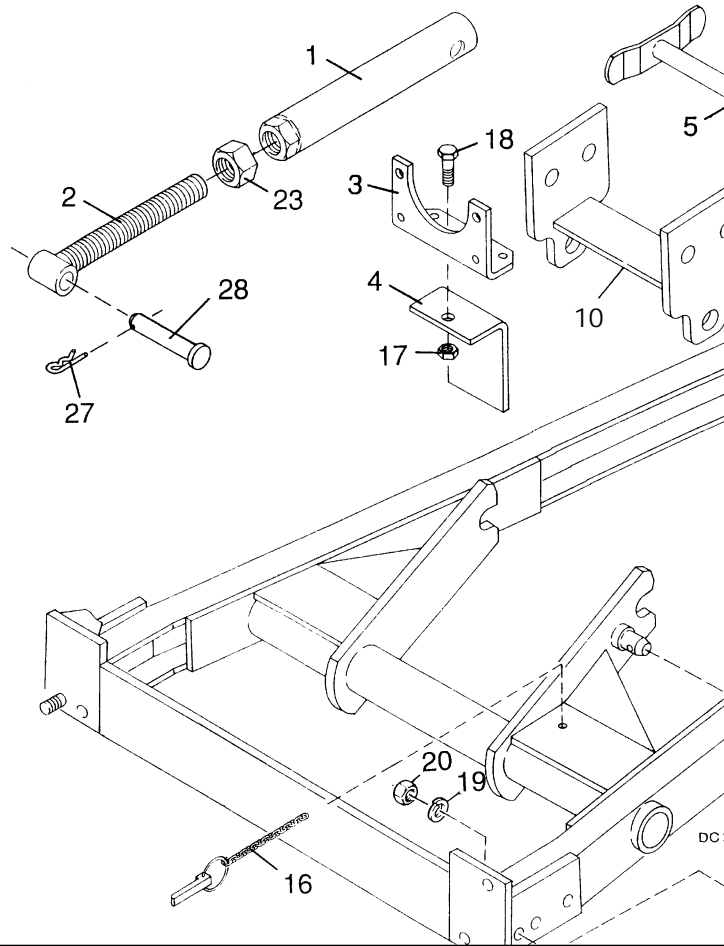


Figure 10. Seat Mounting Assembly

---

## NOTES

## SUB-FRAME MOUNTING KIT



Ref No	Part No	No Used	Description
1	62158	1	Outer top link
2	64956	1	Inner top link
3	62134	1	Pump plate
4	65431	1	Pump mounting bracket
5	65414	1	Front mounting pin
6	62502	1	Front mounting bracket
7	37495	1	Sub-frame
8	65429	2	Mounting spacer
9	62944	2	Backhoe mounting step
10	54106	1	Front mount (Models B6200, B1550, B1750 with DuAl 145 Loader)

### HARDWARE

Ref No	Part No	Description
15	62043	1/4 x 1-3/4 Klik pin
16	64150	1/4 x 1-3/4 Klik pin with chain

Ref No	Part No	Description
17	13921 *	7/16 NC Hex locknut
18	10379 *	7/16 NC x 1-1/4 Hex head cap screw GR5
19	30008 *	7/8 Lockwasher
20	4261	7/8 NC Hex nut
21	65121	7/8 x 1-1/4 x 14 GA Flat washer
22	62541 *	7/8 NC x 2-1/2 Hex head cap screw GR5
23	3132	1 NC Hex nut
24	902 *	5/8 NC x 2 Hex head cap screw HT
25	1286 *	5/8 Heavy lockwasher
26	230 *	5/8 NC Hex nut
27	2688 *	1/8 Safety pin
28	62540	3/4 x 3-1/4 Clevis pin
29	53841	Sleeve .88 x 1.25 x .38

\*Obtain Locally

# BOLT TORQUE

After every ten (10) hours of operation, check all hardware and tighten where required.

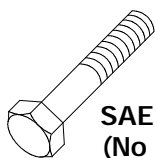
## SAE Series Torque Chart

DO NOT use these values if a different torque value or tightening procedure is listed for a specific application. Torque values listed are for general use only.

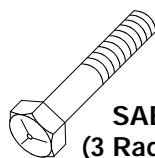
Fasteners should be replaced with the same grade.

Make sure fastener threads are clean and you properly start thread engagement. This will prevent them from failing when tightening.

### SAE Bolt Head Markings



**SAE Grade 2**  
(No Dashes)



**SAE Grade 5**  
(3 Radial Dashes)



**SAE Grade 8**  
(6 Radial Dashes)

Bolt Diameter "A"	Wrench Size	MARKING ON HEAD					
		SAE 2		SAE 5		SAE 8	
		Lbs.-Ft.	(N-m)	Lbs.-Ft.	(N-m)	Lbs.-Ft.	(N-m)
1/4"	7/16"	6	(8)	11	(15)	14	(19)
5/16"	1/2"	13	(18)	21	(28)	25	(34)
3/8"	9/16"	23	(31)	38	(52)	55	(75)
7/16"	5/8"	37	(50)	55	(75)	80	(110)
1/2"	3/4"	57	(77)	85	(115)	120	(165)
9/16"	13/16"	82	(111)	125	(170)	180	(245)
5/8"	15/16"	111	(150)	175	(240)	230	(310)
3/4"	1-1/8"	200	(270)	300	(410)	440	(600)
7/8"	1-5/16"	280	(380)	450	(610)	720	(975)
1"	1-1/2"	350	(475)	680	(925)	1035	(1400)
1-1/8"	1-11/16"	450	(610)	885	(1200)		
1-1/4"	1-7/8"	600	(815)	1255	(1700)		
1-3/8"	2-1/16"	675	(915)	1620	(2200)		
1-1/2"	2-1/4"	920	(1250)	2200	(2900)		

## Metric Series Torque Chart

Use only metric tools on metric hardware. Other tools may not fit properly. They may slip and cause injury.

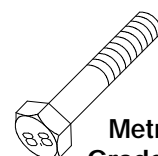
DO NOT use these values if a different torque value or tightening procedure is listed for a specific application. Torque values listed are for general use only.

Fasteners should be replaced with the same grade.

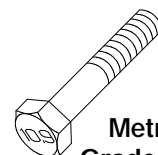
Make sure fastener threads are clean and you properly start thread engagement. This will prevent them from failing when tightening.

Bolt Diameter "A"	Wrench Size	MARKING ON HEAD			
		8.8		10.9	
		N-m	(Lbs.-Ft.)	N-m	(Lbs.-Ft.)
5 mm	8 mm	6	(4.5)	9	(6.5)
6 mm	10 mm	10	(7.5)	15	(11)
8 mm	13 mm	25	(18)	35	(26)
10 mm	16 mm	50	(37)	75	(55)
12 mm	18 mm	85	(63)	130	(97)
14 mm	21 mm	110	(80)	150	(110)
16 mm	24 mm	215	(159)	315	(232)
20 mm	30 mm	435	(321)	620	(457)
24 mm	36 mm	750	(553)	1070	(789)
30 mm	46 mm	1495	(1103)	2130	(1571)

### Metric Bolt Head Markings

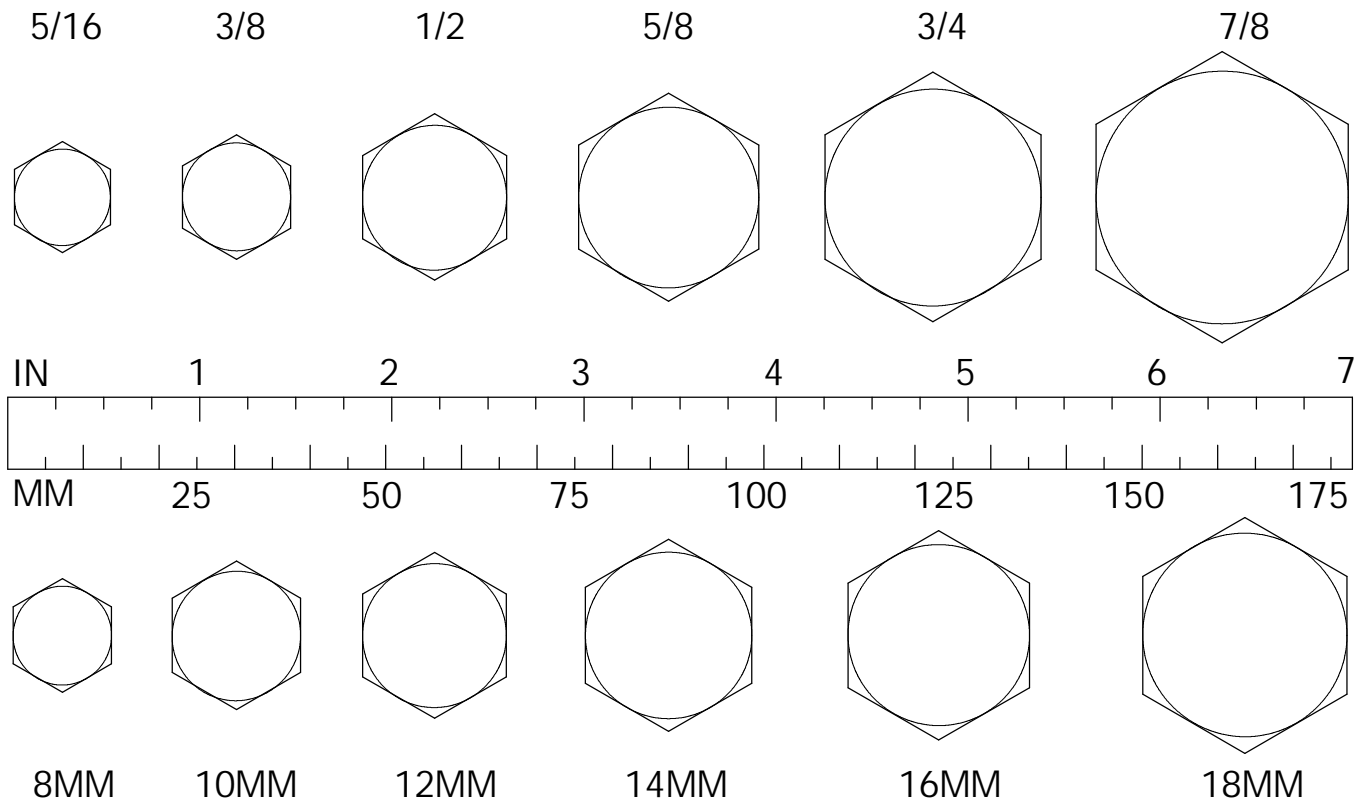


**Metric Grade 8.8**



**Metric Grade 10.9**

**BOLT SIZE CHART**



**NOTES**

# NOTES

# WARRANTY

Please enter information below and **SAVE FOR FUTURE REFERENCE.**

Date Purchased: \_\_\_\_\_

From (Dealer): \_\_\_\_\_

Model Number: \_\_\_\_\_

Serial Number: \_\_\_\_\_

WOODS warrants each new WOODS product to be free from defects in material and workmanship. This warranty is applicable only for the normal service life expectancy of the machine or components, not to exceed twelve consecutive months from the date of delivery of the new WOODS product to the original purchaser.

Genuine WOODS replacement parts and components will be warranted for 90 days from date of purchase, or the remainder of the original equipment warranty period, whichever is longer.

Under no circumstances will it cover any merchandise or components thereof, which, in the opinion of the company, has been subjected to negligent handling, misuse, alteration, an accident, or if repairs have been made with parts other than those obtainable through WOODS.

The company in no way warrants engines, batteries, tires or other trade accessories since these items are warranted separately by their respective manufacturers.

Our obligation under this warranty shall be limited to repairing or replacing, free of charge to the original purchaser, any part that in our judgement shall show evidence of such defect, provided further that such part shall be returned within thirty (30) days from date of failure to WOODS, routed through the dealer and distributor from whom the purchase was made, transportation charges prepaid.

This warranty shall not be interpreted to render us liable for injury or damages of any kind or nature to person or property. This warranty does not extend to loss of crops, loss because of delay in harvesting, or any expense or loss incurred for labor, supplies, substitute machinery, rental or for any other reason.

Except as set forth above, WOODS SHALL HAVE NO OBLIGATION OR LIABILITY OF ANY KIND ON ACCOUNT OF ANY OF ITS EQUIPMENT AND SHALL NOT BE LIABLE FOR SPECIAL OR CONSEQUENTIAL DAMAGES. WOODS MAKES NO OTHER WARRANTY, EXPRESS OR IMPLIED, AND, SPECIFICALLY, WOODS DISCLAIMS ANY IMPLIED WARRANTY OF MERCHANTABILITY OR FITNESS FOR A PARTICULAR PURPOSE. SOME STATES OR PROVINCES DO NOT PERMIT LIMITATIONS OR EXCLUSIONS OF IMPLIED WARRANTIES OR INCIDENTAL OR CONSEQUENTIAL DAMAGES, SO THE LIMITATIONS OR EXCLUSIONS IN THIS WARRANTY MAY NOT APPLY.

This warranty is subject to any existing conditions of supply which may directly affect our ability to obtain materials or manufacture replacement parts.

WOODS reserves the right to make improvements in design or changes in specifications at any time, without incurring any obligations to owners of units previously sold.

No one is authorized to alter, modify, or enlarge this warranty nor the exclusions, limitations and reservations.

## **Woods Equipment Company**

2606 Illinois Route 2 South  
Post Office Box 1000  
Oregon, Illinois 61061

815-732-2141 tel  
815-732-7580 fax

The logo for Woods Equipment Company, featuring the word "WOODS" in a bold, stylized, sans-serif font. The letters are black with a white outline, giving it a three-dimensional appearance.

**PART NUMBER**  
**37436**

**Woods Equipment  
Company**

2606 Illinois Route 2 South  
Post Office Box 1000  
Oregon, Illinois 61061

815-732-2141 tel  
815-732-7580 fax

**WOODS**

LITHO IN USA