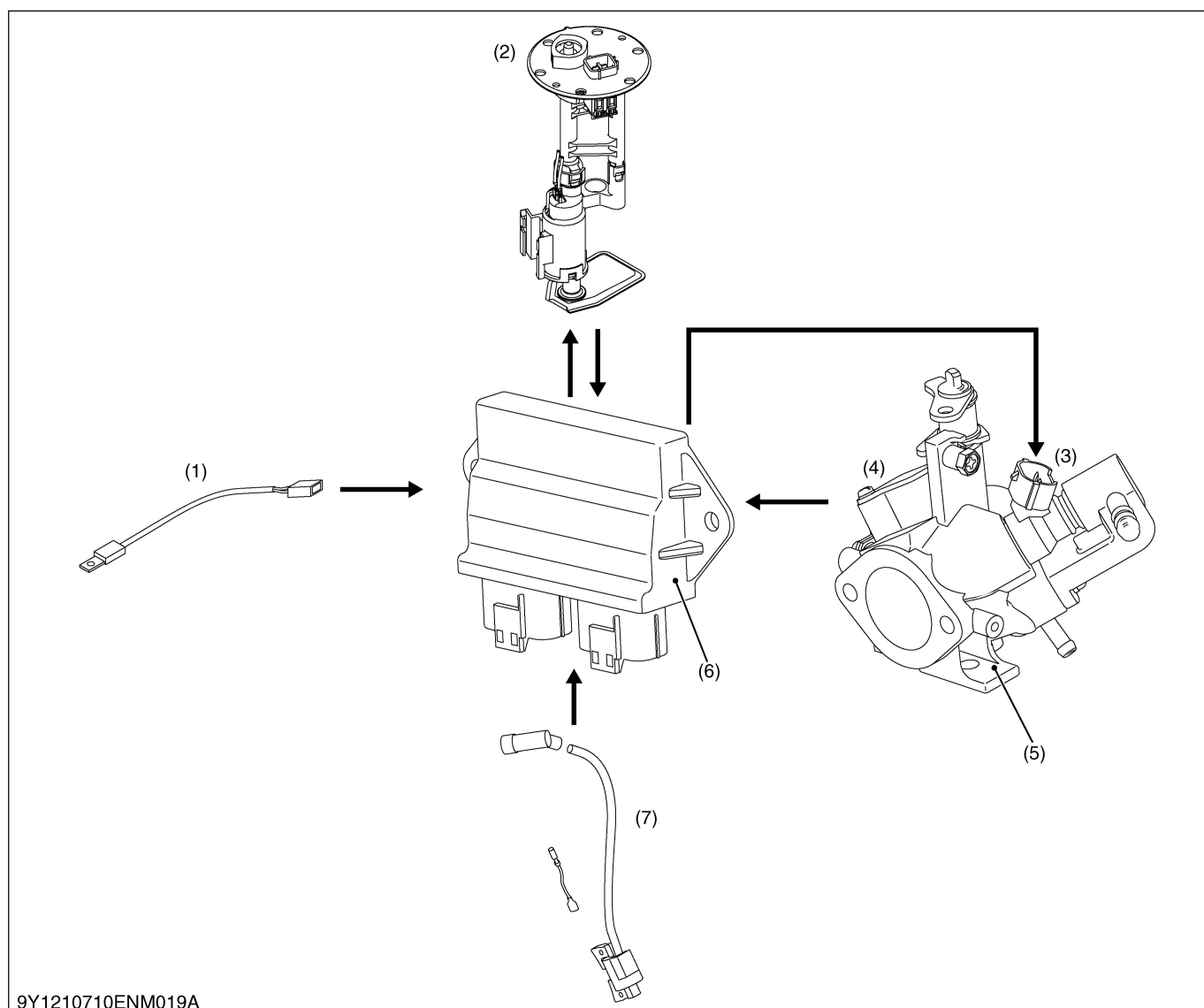


3. FUEL SYSTEM



9Y1210710ENM019A

- | | | | |
|------------------------------------|---------------|-------------------|-------------------|
| (1) Engine Case Temperature Sensor | (2) Fuel Pump | (4) MAP Sensor | (6) ECU |
| | (3) Injector | (5) Throttle Body | (7) Ignition Coil |

The FI system consists of throttle body, ECU, MAP (Manifold Absolute Pressure) sensor, injector, engine case temperature sensor, electric fuel pump and engine rotation signal from ignition coil.

Fuel in the fuel tank is compressed by fuel pump, and the fuel is provided to the throttle body.

Fuel that goes into the throttle body is sprayed just at the right time and appropriate quantities by the injector controlled by ECU, and then the sprayed fuel is delivered to the intake manifold while being mixed with air.

ECU is controlled by the signal of MAP sensor, engine case temperature sensor, and ignition coil.

9Y1210710ENM0016US0