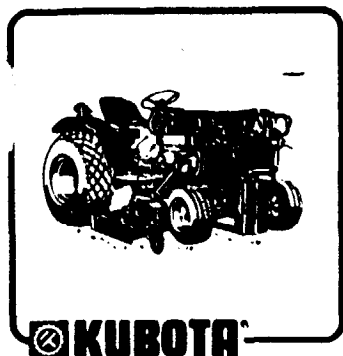


THIS BULLETIN SUPERSEDES SB79-22



KUBOTA
TRACTOR CORPORATION



Bulletin No. — SB81-06

Equipment No. — 1 of 5

— "L" SERIES — 81-04

Date — 2-6-81

Authorization

Donald H. Kemp

LOSS OF ENGINE OIL PASSAGE PLUG

SERVICE INFORMATION: An aluminum plug, used to seal an oil passage in the engine of the below listed tractors, may come out causing rapid loss of engine oil. To prevent the loss of this plug, a plug plate kit is available. This kit must be installed on all units in stock or in the field that fall within the serial number ranges below.

<u>SERIAL NUMBER RANGE:</u>	L185 ---- 53322-54103	L245HC -- 10729-12631
	L185DT -- 51502-51905	L295DT -- 12181-12730
	L245 ---- 51282-51841	L345 ---- Up to 10617
	L245DT -- 54975-57368	

SERVICE PROCEDURES: For all "L" Series tractors (Except L245HC, see page 2)

1. Locate the affected oil passage plug found just below the oil filter as shown in figure #1.

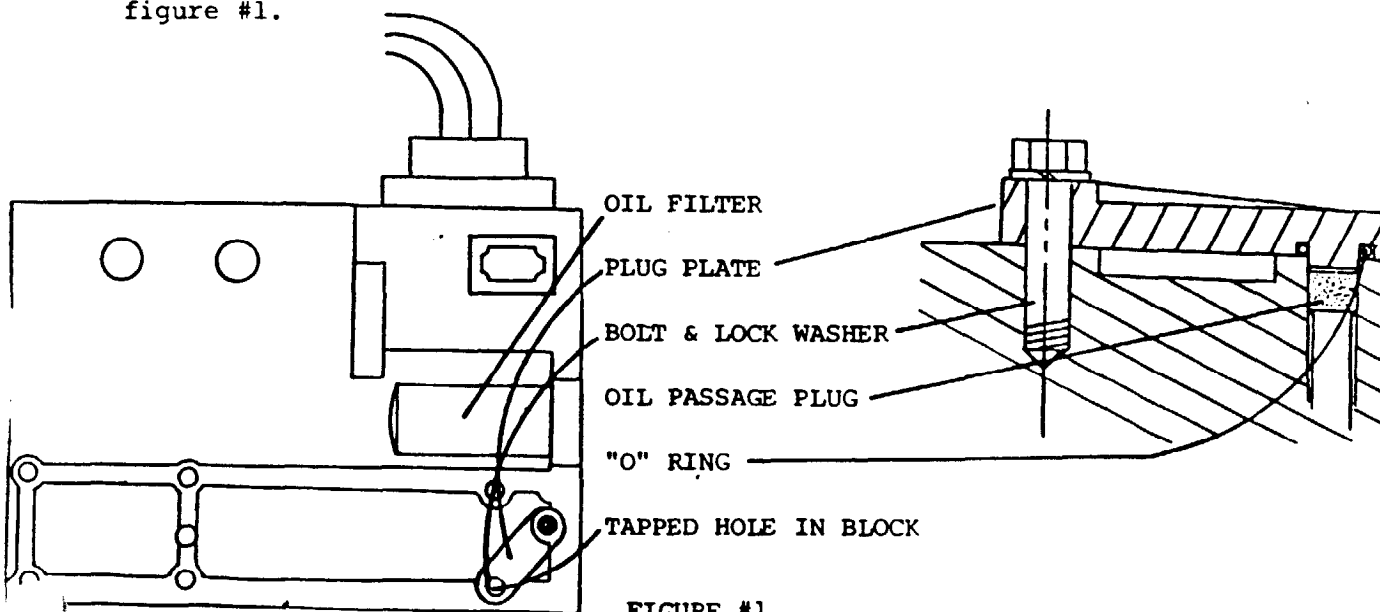
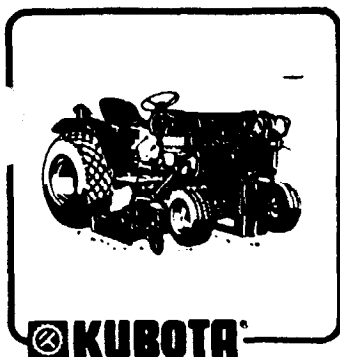


FIGURE #1

2. Remove the plastic thread protector from the tapped hole just below the oil passage plug and toward the flywheel.

(CONTINUED)



Bulletin No. 2 of 5
Equipment No. _____

ate _____

Authorization _____

3. Carefully align the plug plate and "O" ring over the oil passage plug and secure the plug plate into the threaded hole with the bolt and lock washer provided.
Torque the bolt to 60 ft. lbs.

L245HC TRACTORS ONLY

1. Locate the affected oil passage plug found just below the filter as shown in in figure #1 (see page 1).
2. Loosen the steering column guide bolt. Remove the four steering gearbox bolts and swing the steering gearbox out of the way.
3. Remove the bolt and lock washer which secures the side frame to the engine. See figure #2.

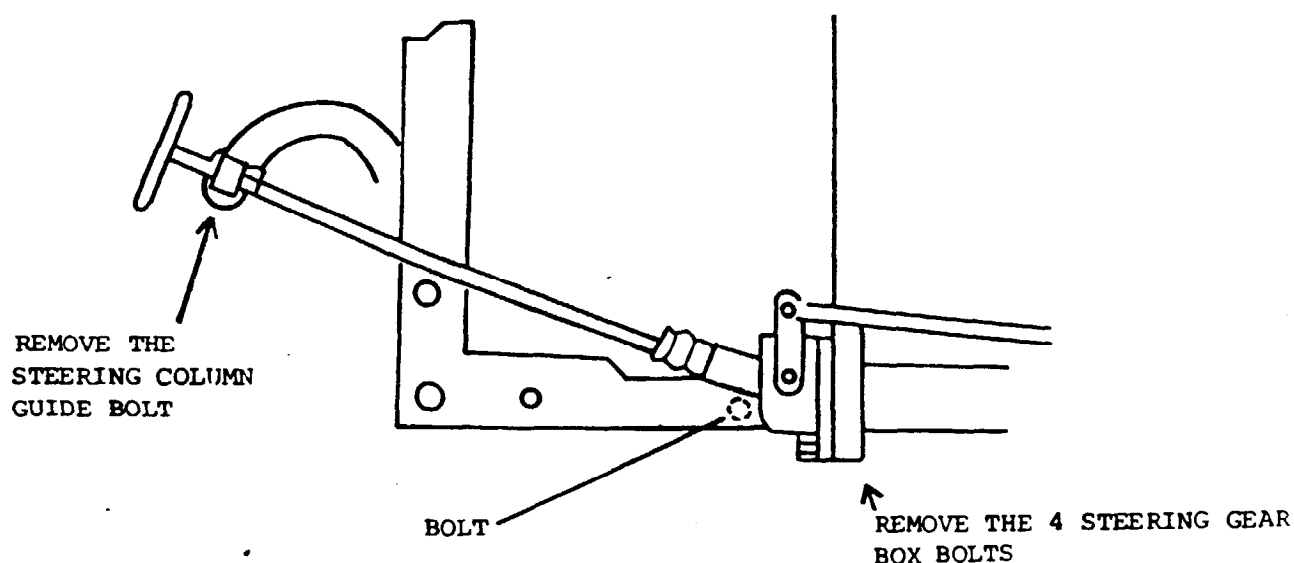
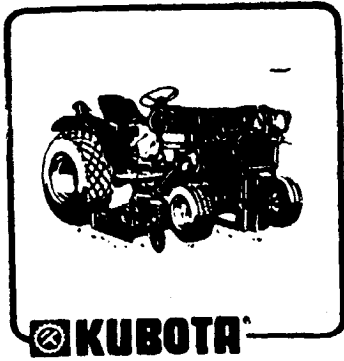


FIGURE #2 (SIDE VIEW)

(CONTINUED)



KUBOTA
TRACTOR CORPORATION

Bulletin No. 3 of 5

Equipment No. _____

Date _____

Authorization _____

4. Remove and discard the spacer between the side frame and engine. See figure #3.
5. Position the "O" ring in the groove of the plug plate and place the plug plate over the oil passage plug.

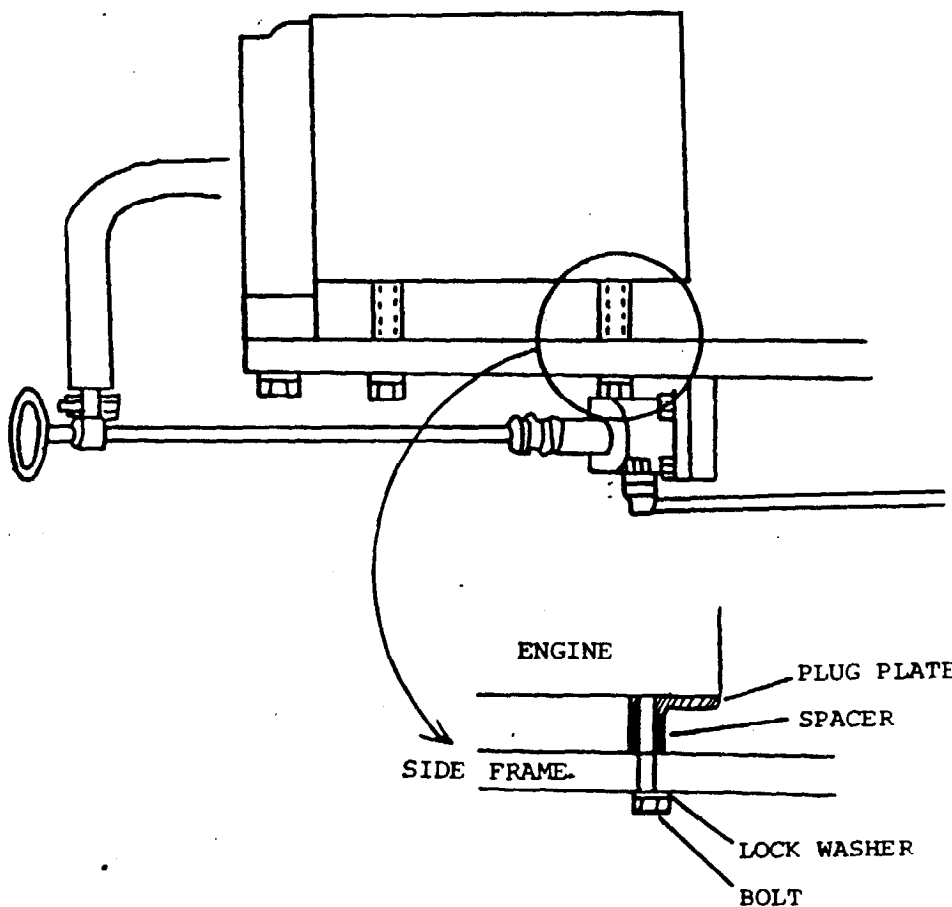
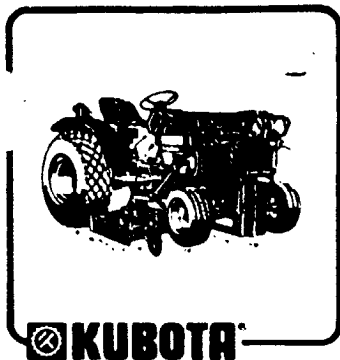


FIGURE #3 (FRONT VIEW)

(CONTINUED)



Bulletin No. 4 of 5
Equipment No. _____
Date _____
Authorization _____

6. Insert the new short spacer between the frame and plug plate. If there is any clearance between the spacer and side frame, install the thin washer supplied in the kit.
7. Reinstall the original bolt.
8. Reinstall steering column and steering gearbox.

PARTS INFORMATION: This engine plug kit may be ordered from your local Parts Department. Please order by Kit Number.

"L" SERIES TRACTOR Engine Plug Plate Kit (P/N 15000-36831) (See L245HC Next page)

DESCRIPTION	PART NUMBER	QUANTITY
Plug Plate (cover protection)	16097-44881	1
Bolt	01173-51240	1
Washer, Spring	04512-50120	1
"O" Ring	04811-00150	1
Instructions	00000-00002	1

(CONTINUED)



Bulletin No. _____

Equipment No. 5 of 5

Date _____

Authorization _____

L245HC TRACTOR Engine Plug Plate Kit (P/N 15000-36841)

DESCRIPTION	PART NUMBER	QUANTITY
Plug Plate (Cover Protection)	16097-44881	1
"O" Ring	04811-00150	1
Spacer (collar)	16097-13671	1
Shim	35219-13671	1
Instructions	00000-00001	1

WARRANTY INFORMATION: Submit a Warranty Adjustment Request for the cost of the kit plus .5 hours labor (one hour labor will be allowed for L245HC tractors). Under "Description of Failure" write: Refer to SB81-06.