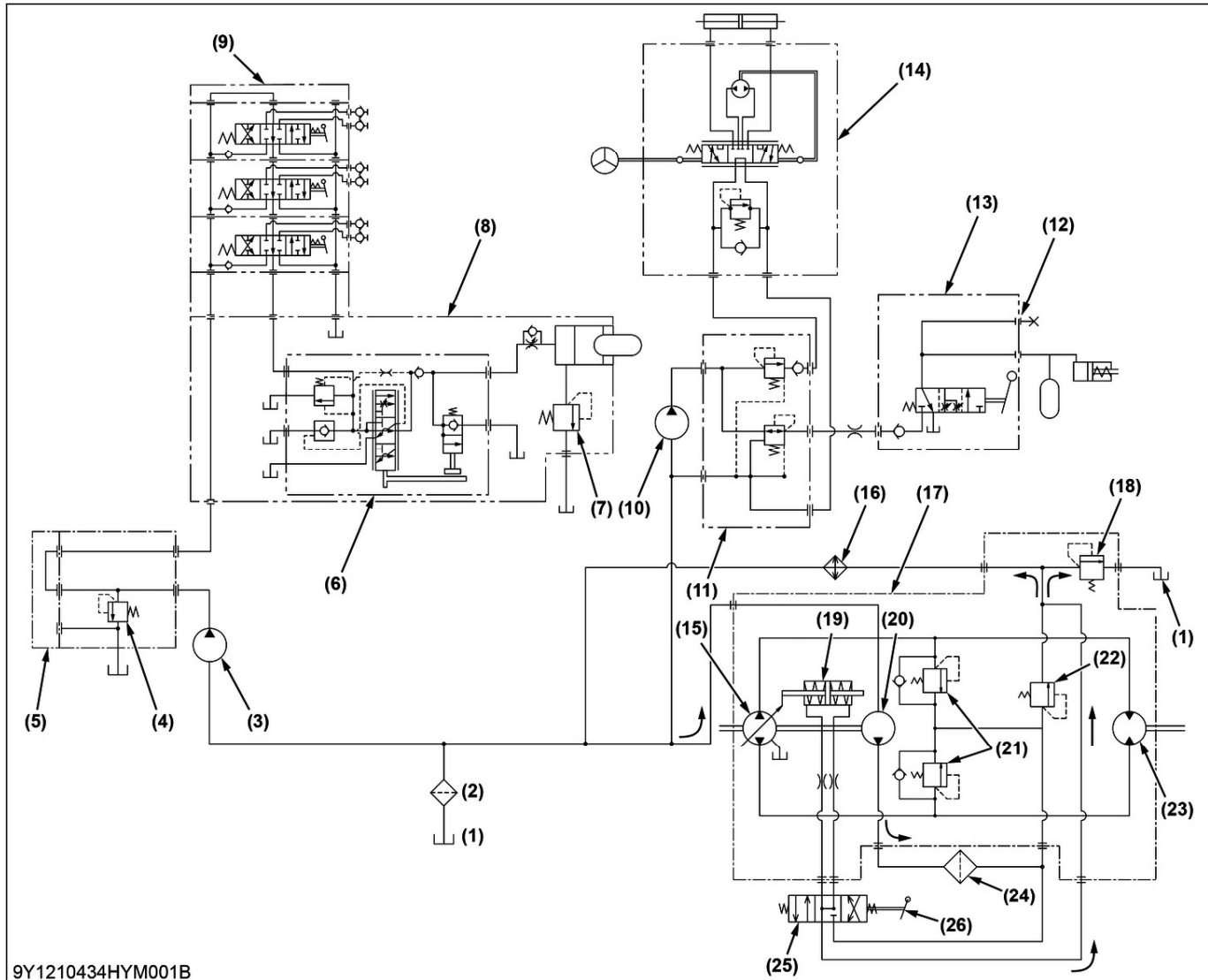


1.2 Hydraulic circuit for HST model



- | | | | |
|---|---|--------------------------------|---|
| (1) Transmission case | (8) Hydraulic cylinder block | (14) Power steering controller | (21) Check and high pressure relief valve |
| (2) Hydraulic oil filter | (9) Auxiliary control valve (Option) | (15) Pump cylinder Block | (22) Charge relief valve |
| (3) Hydraulic pump (for 3-points hitch) | (10) Hydraulic pump (for power steering and PTO clutch) | (16) Oil cooler | (23) Motor cylinder block |
| (4) Relief valve | (11) Regulator Valve | (17) HST unit | (24) Transmission oil filter |
| (5) Front hydraulic block | (12) Check port (for PTO clutch operating pressure) | (18) Case relief valve | (25) Regulator valve |
| (6) Position control valve | (13) PTO clutch valve | (19) Servo piston | (26) HST pedal |
| (7) Cylinder safety valve | | (20) Charge pump | |

Specification of hydraulic parts

(3)	Above 35.8 L/min. (9.46 U.S.gals/min., 7.87 Imp.gals/min.)
(4)	18.1 to 19.1 MPa (185 to 194 kgf/cm ² , 2630 to 2770 psi)
(7)	19.6 to 22.6 MPa (200 to 230 kgf/cm ² , 2850 to 3270 psi)
(10)	Above 18.6 L/min. (4.91 U.S.gals/min., 4.09 Imp.gals/min.)
(13)	12.7 to 13.7 MPa (130 to 139 kgf/cm ² , 1850 to 1980 psi)