

INSTRUCTION MANUAL MID PTO GEAR KIT for KUBOTA TRACTOR L4240 / L4740 / L5040 / L5240 / L5740

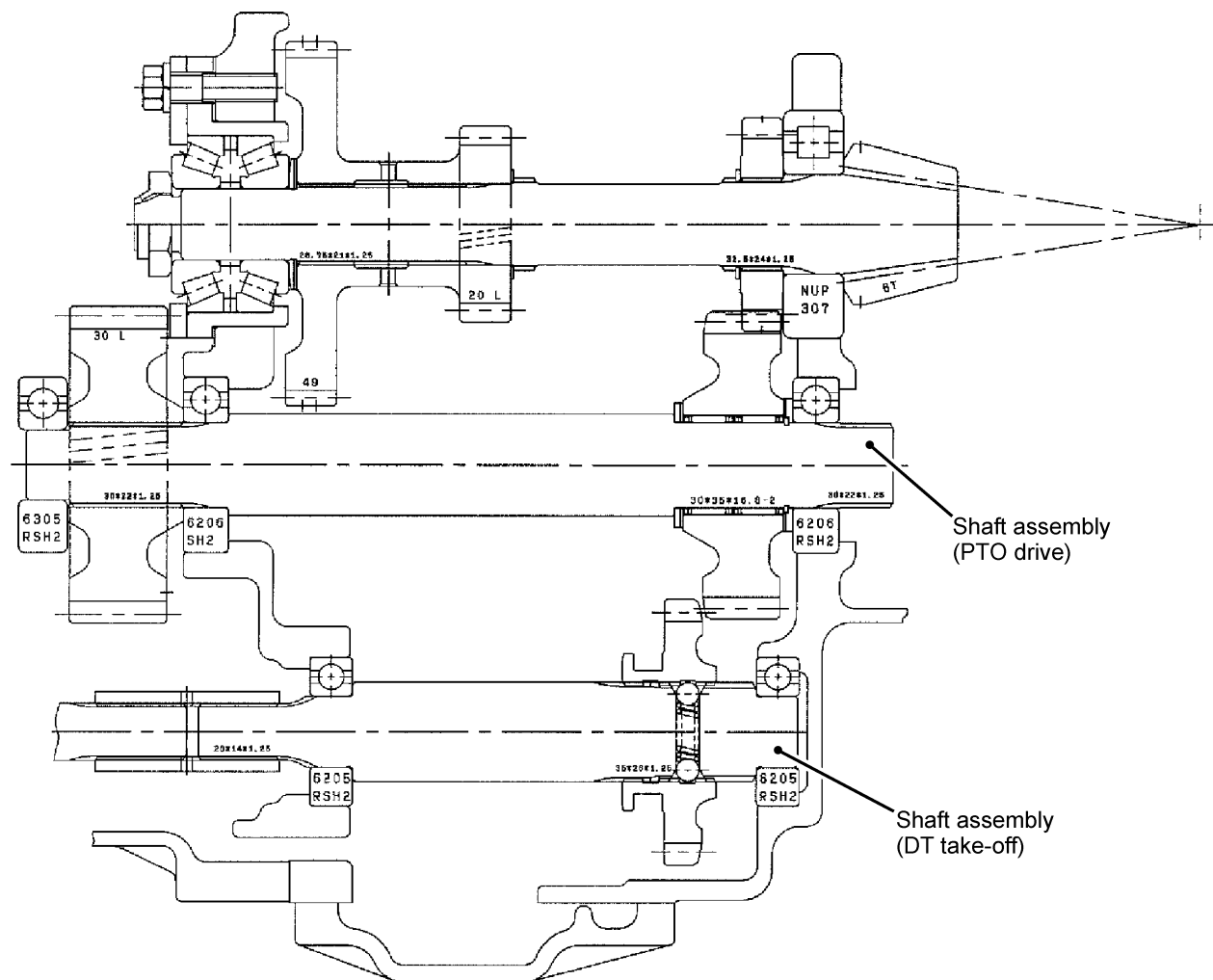
The MID PTO gear kit is intended for the HST, MT and GST ROPS type tractors of models L4240, L4740, L5040, L5240 and L5740. On these machines, some MID PTO transmission parts must be additionally built into the transmission to take off the power from the MID PTO assembly (TD170-9865-1).

■ Disassembling

Disassemble the tractor in the following steps. Refer also to the related Workshop Manual.

1. Transmission

- (1) Separate the transmission case from the mid case.
- (2) Remove the lock nut first and then the pinion bearing case.
- (3) Remove the bearing holder from the transmission.
- (4) Disconnect the two shaft assemblies (PTO drive and DT take-off).
- (5) Disassemble the above two assemblies. (Handle the parts with enough care. The parts but the shafts will be used again.)

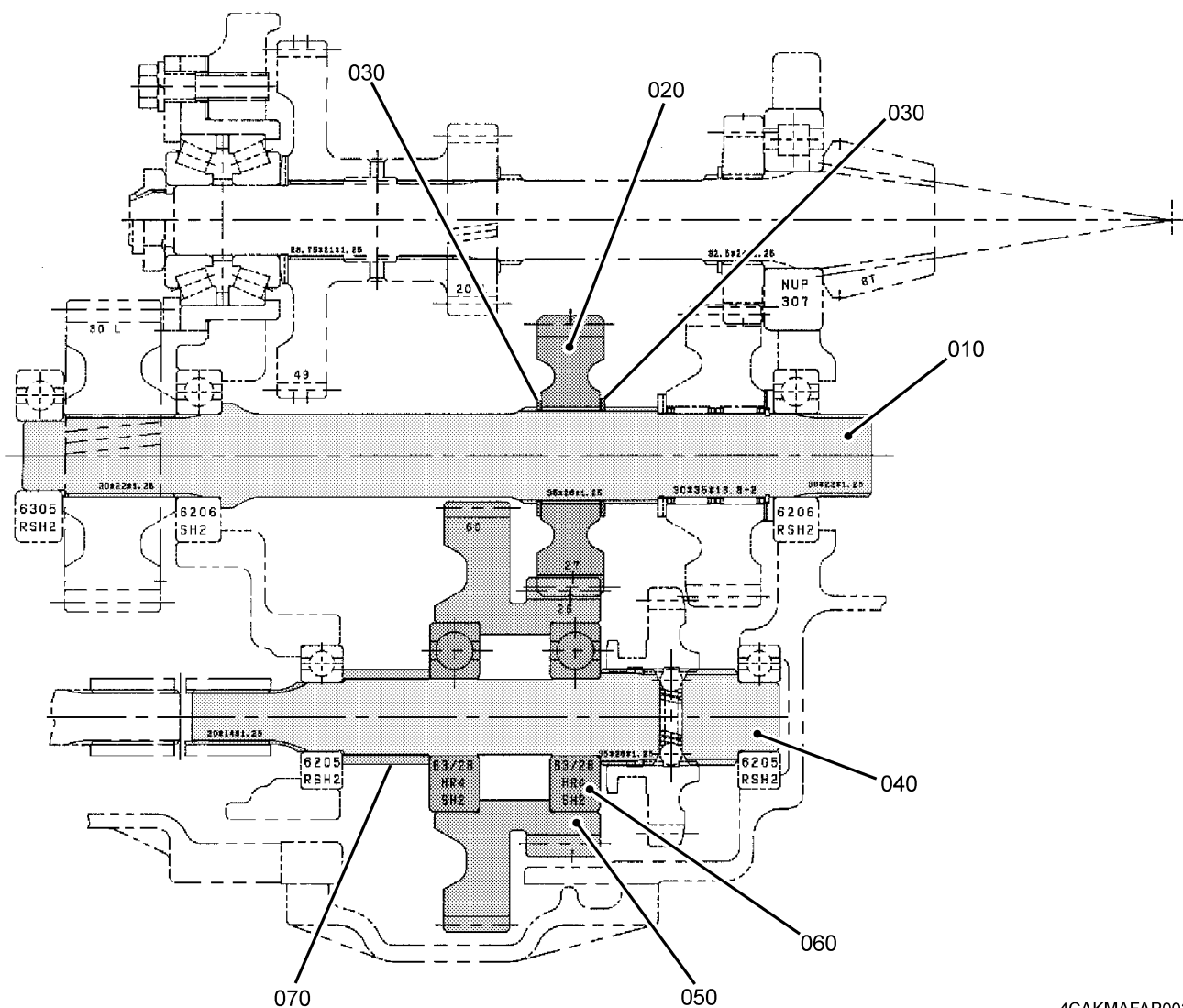


4CAKMAFAP001A

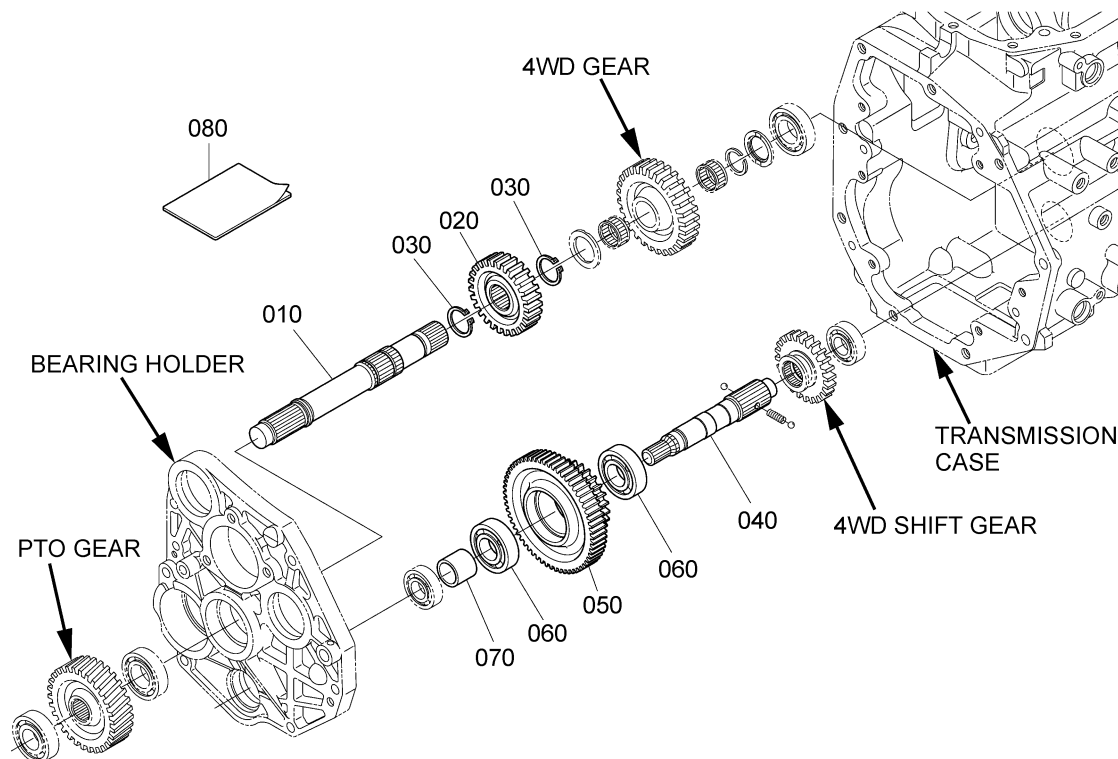
■ Reassembling

Reassemble the tractor in the following steps. Refer also to the related Workshop Manual.

- (1) Fit all the following parts in the shaft (010) of the MID PTO gear kit: Parts (020) and (030), as well as the parts removed in the disassembling procedure.
- (2) Fit all the following parts in the shaft (040) of the MID PTO gear kit: Parts (050), (060) and (070), as well as the parts removed in the disassembling procedure.



■ Parts List



4CAKMAFAP003A

REF.No	PART No.	PART NAME	Q'TY	REMARKS
010	TD170-2368-0	SHAFT, PTO DRIVE	1	
020	TD170-2505-0	GEAR, M-PTO	1	27T
030	04612-00350	CIR CLIP, EXTERNAL	2	
040	TD170-1522-0	SHAFT, DT DRIVE	1	
050	TD170-2510-0	GEAR, M-PTO	1	26-60T
060	32751-2232-0	BEARING, BALL	2	
070	TD030-2512-0	COLLAR	1	
080	TD170-9831-0	MANUAL, INSTRUCTION	1	This paper

(3) Reconnect the two shaft assemblies (PTO drive and DT take-off) prepared in the above steps (1) and (2).

(4) Install the bearing holder back to the transmission.

(5) Finally reassemble the transmission case and the mid case.

■ Precautions for reassembly

Tighten respective bolts to the torques listed below.

Nominal Dia.	Type	Ordinary bolts (not punched)
M10		39.3 to 45.4 N-m (4.0 to 4.6 kgf-m, 29.0 to 33.5 ft-lbs)
M12		63.0 to 72.5 N-m (6.4 to 7.4 kgf-m, 46.5 to 53.5 ft-lbs)

(Not should have the same torque as the special bolts.)