



## PARTS AND OWNER'S MANUAL

### ROTARY SNOW PLOW MODEL B-222A

MODELS STARTING AT SERIAL NO.—0326



THIS SAFETY ALERT SYMBOL IDENTIFIES IMPORTANT  
SAFETY MESSAGES IN THIS MANUAL.

NO. RSP 7921K

## GENERAL INFORMATION



### SAFETY SUGGESTIONS

- Disengage power before starting.
- Make sure everyone is clear of machine before starting and during operation.
- Completely shut down machine and tractor before greasing, adjusting or unclogging blower.
- Do not clear plugged spout with blower running or P.T.O. engaged.
- Keep hands, feet and clothing away from moving parts.
- Keep all shields in place.
- Only the Operator should be allowed on tractor.
- Use adequate safety warning lights and devices. Check local regulations.
- Know how to stop Snow Plow operation in case of emergency.

### SPECIFICATIONS:

Cutting Width — 48"

Cutting Height — 23"

Single 13" Fluted Spiral Auger

18" — 3 Bladed Rotor

Chute Rotation — 200 degrees

Chute Length — 28"

Manual Chute Rotator

### MAINTENANCE AND ADJUSTMENTS

**Lubrication** - All bearings used in the Blower and drive are sealed and do not require lubrication. The gears in the right angle drive are designed to run dry and also do not require lubrication.

Grease the universal shaft at the joints and at the centre fitting after each 5 hours of use.

Apply light oil (SAE 10-20) to the base of the casting chute and to all hinge points as needed to maintain free operation.

Apply light oil to the auger drive chain after each time of using to prevent rust, especially where road salt is present.

**Adjustment** - Maintain sufficient belt tightness to prevent the belts slipping under load. Excessive slipping will cause heat build up and destroy the belts.

Front tire pressure should be 35 p.s.i. for proper ground clearance when blower is raised to transport position.

A shear bolt is located on the auger drive cross shaft, to protect the auger against damage from foreign objects. Replace with 1/4 x 3/4 Grade 2 bolt when necessary.

The auger drive chain tightener should be adjusted when necessary as the chain wears. Do not adjust to the point where chain is taut as this accelerates wear; a 1/4 inch sag in the bottom span is satisfactory.

## MOUNTING INSTRUCTIONS B-222A

- 1(a) In order to install the B222A Snow Blower, it will be necessary to remove the two horizontal bars welded inside the frame at the front of the tractor, which support the front end weight. A torch or hacksaw may be used to cut the welds at each end; remaining weld or burrs should be ground smooth, and the area repainted. Remove the bars only, do not remove the cross-piece which supports the rear of the bars. (See fig. 1). Note: A new weight bracket is included with the blower hitch bundle which can be bolted to the side frames when the blower is not in use.

- (b) A stamped metal shield plate at the base of the radiator must be removed. Replace the two cap screws in the holes for future use when the shield is reinstalled (See fig. 1).

### 2. Installing the Drive

- (a) Lower top bearing mount into place and secure to tractor frame using four 12 mm x 25 mm capscrews and lock washers (See fig. 2).

- (b) Remove the nuts and lockwashers from bearing bolts in upper drive shaft assembly. Slide coupler end of shaft in under Rad., and on to splined end of engine crank. The bearing bolts must also be inserted into holes in the bracket. Snug up bolts, lockwashers and nuts. CHECK TO SEE THAT SPLINED CONNECTION DOES NOT BIND. Tighten up bolts. (See fig. 3)

- (c) Mount the right and left hand side frames loosely using three, 10 mm x 25 mm capscrews per side. (See fig. 4). Slide the lower drive assembly into place and secure with four 3/8 - 16 x 1" bolts lockwashers and nuts.

- (d) Mount front frame to tractor using eight 10 mm x 20 mm capscrews and lockwasher through tapped holes in cross piece. Secure frame to right and left hand side frames using two 1/2 - 13 x 1 1/4" bolts, lock washers and nuts. Tighten all bolts securely. (See fig. 5).

CHECK ALIGNMENT OF TOP AND BOTTOM PULLEY. If adjustment is required, remove jam set screw located 90° to keyway and loosen the other two set screws. Align pulleys, retighten the setscrews and replace the jam setscrew.

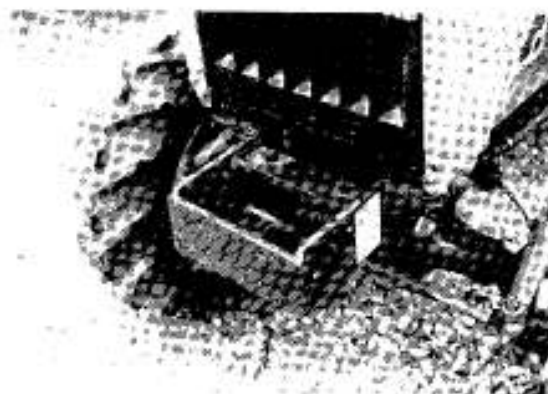


FIG. 1



FIG. 2



FIG. 3

- (e) Install spring (see illustrated parts drawing, page 9, item 22) into hole in tube of lower pulley arm and through adjusting rod (item 80). Insert rod through hole in tab on back of top bearing bracket. Insert rod in place using one plate washer and two jam nuts. Adjust spring tension to hold lower sheave up.

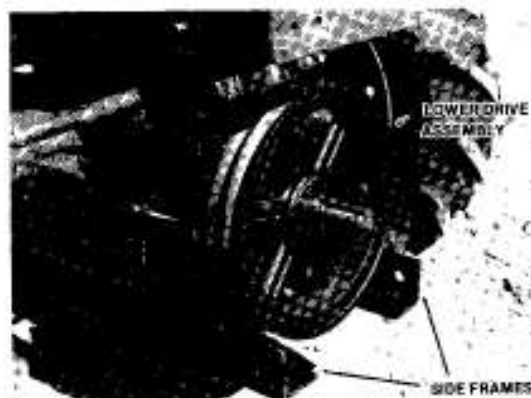


FIG. 4

- (f) Install matched set of two "V" belts over top and bottom sheaves. (see fig. 6). Install two 3/8" x 3" bolts into nuts welded to bearing bracket on each side of top sheave (see illustrated parts drawing, page 9 item 13).

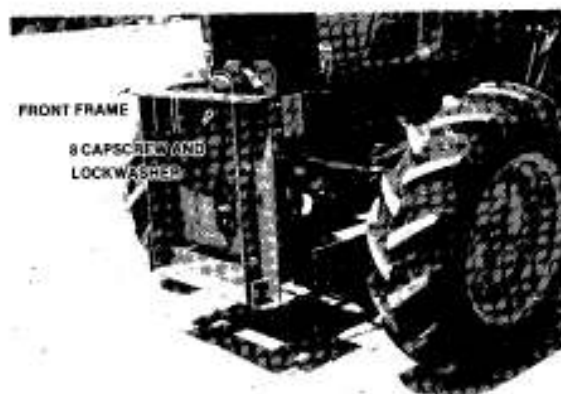


FIG. 5

- (g) Install linkage mounting plate to inside of frame rail using two 3/8" x 1" bolts. (See fig. 6). Install bushing (item 39, page 9) through hole on bottom pin as shown. Install bottom link (item 37) next to bushing using a plate washer and cotter pin. Install pivot link (item 33) on top pin using a plate washer & roll pin as shown.

Install throw link (item 36) over pins on pivot link and bottom link and connect to pivot link using a plate washer and cotter pin.

Install main link (item 38) through slot in side frame and over center pin of linkage using a plate washer and cotter pin as shown on page 9.

Connect rod end (item 30) to threaded rod (item 29) using a jam nut above rod end. Thread rod end (item 30) with lockwasher into threaded hole in pin of pivot link (item 33). Thread a nut onto threaded rod, apply a plate washer, and insert through hole in plate of lower pulley arm. Apply platewasher and nut as shown.

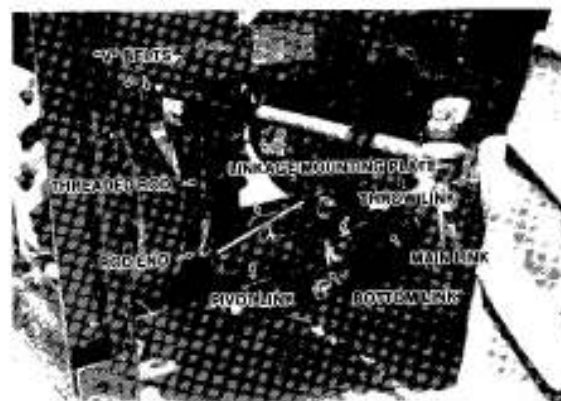


FIG. 6

- (h) Mount handle mounting plate to side of tractor using two M10 x 25 mm capscrews and lockwashers.

Mount handle to mounting plate (with pin pointing inward). Using a plate washer and cotter pin as shown in fig. 7. Connect main link and handle with main link weldment using a plate washer and cotter pin at handle and two 5/16 x 1" capscrews at the main link as shown in Fig. 8. Snug up bolts and engage linkage by moving handle towards front of tractor till it hits stop. Check linkage to make sure it has gone past the point of linkages being straight in line by approx. 1/8". Tighten bolts. Adjust nut on threaded rod to set belt tension. Proper belt tension is such that a force of approximately 8 pounds is required to deflect each belt a distance of 3/16 inch at the center of the span between the pulleys. Tighten bottom nut and plate washer against plate.

### 3. Installing the Hitch

- (a) Fasten the front shield in place (see fig. 5). Note that the receptacle for the upper shield must be at the bottom.
- (b) Install the lower lift arm to the front frame using capscrews with bushings at the hinge points. The hydraulic cylinder and top link are retained in the lugs at the top of the lift frame by a single bolt, with a bushing in the top link. Fasten the rod end of the cylinder into the lugs on the crossbeam of the lift arm.
- (e) Bolt the crank support bracket to the R.H. side frame as shown. (see fig. 15).

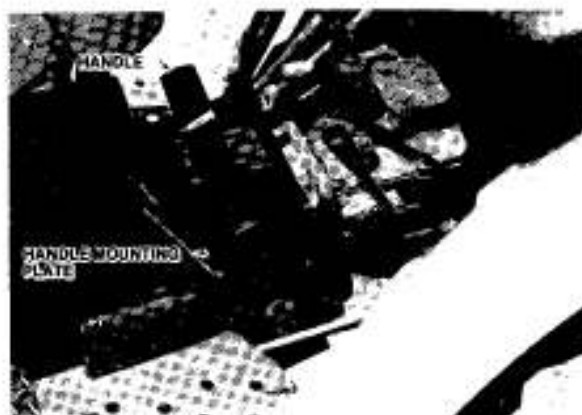


FIG. 7



FIG. 8

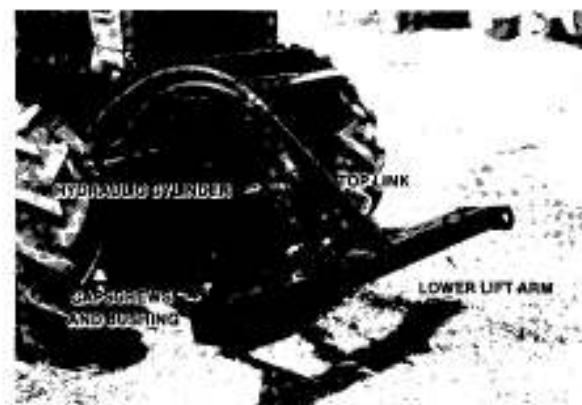


FIG. 9

#### 4(a) Hydraulic Controls - Tap in Block

Remove the cover plate from the tap-in block on the hydraulic line from the pump, and replace with the aluminum adapter block supplied. (Note: Some hydraulic oil may be lost during the change-over and this should be replaced with an equal amount of clean fresh oil of a type and weight specified in the tractor manual).

Locate the control valve on the R.H. fender in the approximate position shown (See fig. 10), mark position of attaching holes and drill through the fender for 5/16" bolts. Bolt the valve securely in place.

Connect the two shorter hoses between the valve and adapter. The hose from the front port in the adapter should be connected to the "IN" port of the valve. Connect the two longer hoses between the working parts of the valve, and the cylinder. Make sure all joints are tight.



FIG. 10

#### 4(b) Hydraulic Controls - Under Seat Valve (Fig. 11, 12)

Locate valve on R.H. fender and secure into place using two 5/16 x 1 3/4" bolts.

Connect valve "IN" port with selector valve using 22" hose, bonded washer & adaptor.

Connect return to tractor filler hole using bonded washer, adaptor and 34" hose.

Connect the two longest (84" long) to the working ports of the valve and the cylinder. Make sure all joints are tight.

See owners manual for correct operation of remote selector valve.

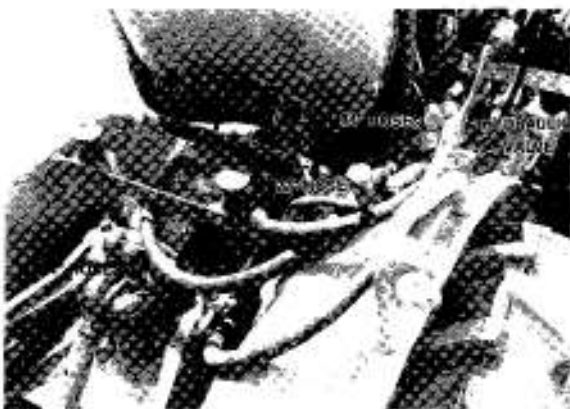


FIG. 11

#### 5(a) Preparing the Blower

The R.H. & L.H. hitch brackets are bolted to the lower frame channels of the blower, and the upper link bracket is fastened under the top crosspiece as shown (See fig. 13). Make sure nuts are tight.

- (b) Remove the three retainers from the base of casting chute. Smear some light grease around the outlet collar on the blower in the area above the angle ring. Place the chute over outlet, make sure it turns freely between the stops and replace the retainers under the angle ring (See fig. 14). If the chute deflector has been shipped in a stowed position, dismantle and reassemble as shown. Position chute so that it is pointing straight ahead of the blower. Bolt the cable clamp loosely through holes in the angle of the chute.



FIG. 12



- (c) Assemble the rotator brackets and shaft to the blower as shown (See fig. 15). The control cable is installed by passing half the cable length through center hole in shaft. Wind each half of the cable 3-1/2 turns in opposite directions around the shaft as shown (See fig. 15). Pull cable ends around each side of chute and pass through the clamp as shown (see fig. 14). Pull cable up tight and tighten clamp. Fasten crank tube to rear end of the shaft as shown.
- (d) Separate the two sections of the universal shaft and install the end with 1-1/4" bore to the blower shaft with square key and pin. The other end is similarly attached to the P.T.O. shaft on the tractor. Tighten setscrews over the keys.

#### Mounting Blower on Tractor

- 6(a) Place the blower in front of the tractor and engage the two parts of the universal shaft. Connect the lift arm points to the lower hitch brackets on the blower, using capscrews and bushings as before. Connect the upper link, also using a bushing as shown (See fig 13).
- (b) Slide long end of crank through hole in the support bracket and into the tube on the rotator shaft. Line up holes in the tube and crank and secure with a bolt as shown (See fig. 15).
- (c) Start the tractor and operate the lift controls. Check for proper lift action. Engage the P.T.O. drive and check operation. Make sure blower comes to a complete stop when P.T.O. is disengaged. When satisfied that everything is working properly, install the upper shield as shown (See fig. 16). Note: Do not make any adjustments while engine is running!



FIG. 13

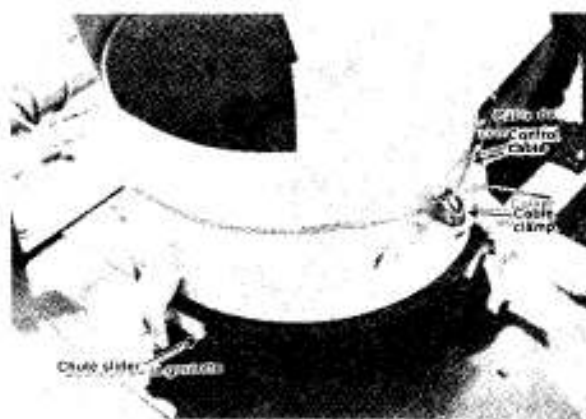


FIG. 14

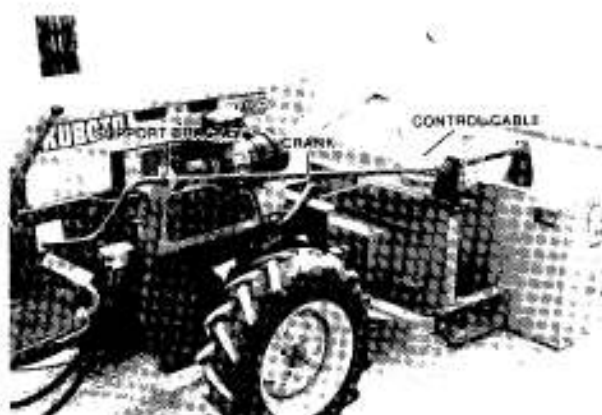


FIG. 15

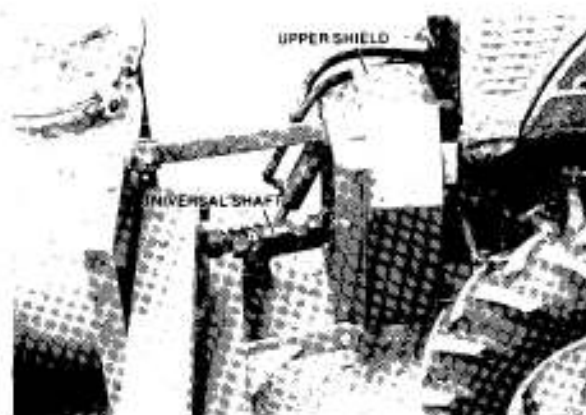
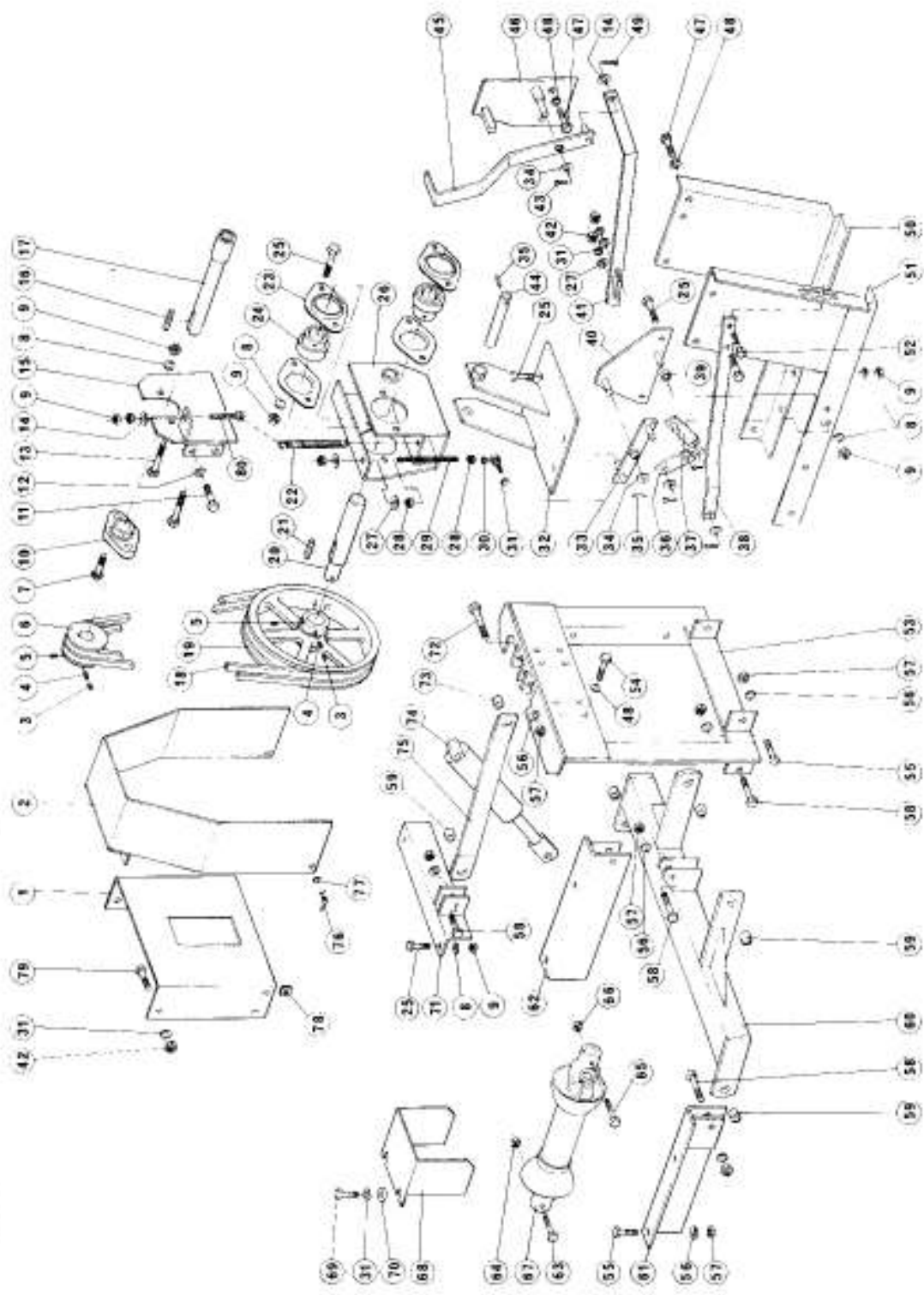


FIG. 16

# HITCH AND DRIVE SHAFT ASSEMBLY

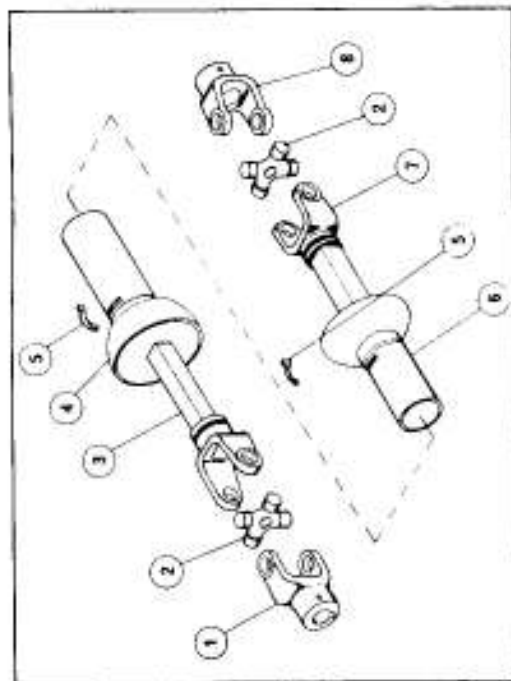




# HITCH & DRIVE SHAFT ASSY.

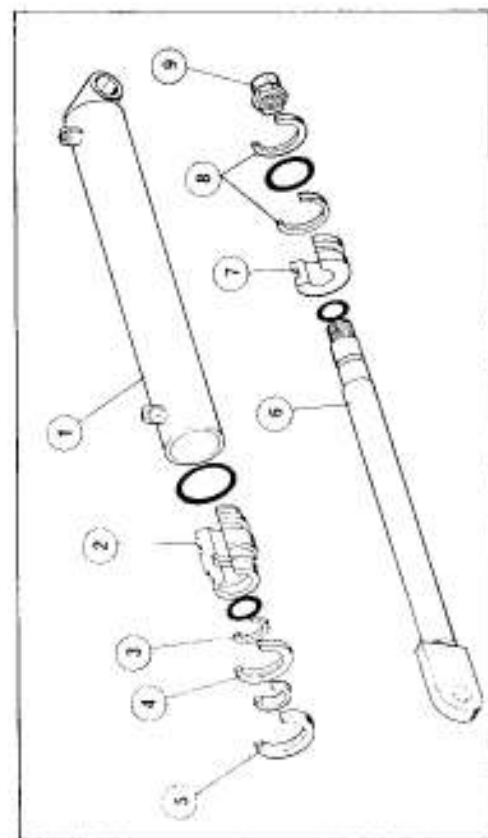
| Item | Part No.    | Description                        | Qty. |
|------|-------------|------------------------------------|------|
| 1    | 70060-00255 | Front Shield                       | 1    |
| 2    | 70060-00254 | Main Shield                        | 1    |
| 3    | 70060-00515 | Set Screw 5/16-18 x 1/4 Cup Point  | 2    |
| 4    | 70060-00514 | Set Screw 5/16-18 x 3/8 Cone Point | 2    |
| 5    | 70060-00513 | Set Screw 5/16-18 x 3/8 Cup Point  | 2    |
| 6    | 70060-00512 | Sheave                             | 1    |
| 7    | O/L         | Hex. Bolt 3/8-16 x 1-1/2           | 2    |
| 8    | O/L         | Lock Washer 3/8                    | 14   |
| 9    | O/L         | Hex. Nut 3/8-16                    | 16   |
| 10   | 70060-00272 | Bearing                            | 1    |
| 11   | 70060-00269 | Hex. Bolt 12 mm - 1.250 x 25 mm    | 4    |
| 12   | 70060-00293 | Lock Washer 12 mm                  | 4    |
| 13   | O/L         | Hex. Bolt 3/8-16 x 3               | 2    |
| 14   | O/L         | Plate Washer 7/16 I.D.             | 5    |
| 15   | 70060-00489 | Bearing Bracket                    | 1    |
| 16   | 70060-00297 | Key 1/4 x 1/4 x 1-3/4              | 1    |
| 17   | 70060-00249 | Shaft Weldment                     | 1    |
| 18   | 70060-00257 | Belts - Matched Set of 2           | 1    |
| 19   | 70060-00520 | Sheave                             | 1    |
| 20   | 70060-00519 | Drive Shaft                        | 1    |
| 21   | 70060-00229 | Key 1/4 x 1/4 x 1-5/8              | 1    |
| 22   | 70060-00505 | Tension Spring                     | 1    |
| 23   | 70060-00521 | Flange                             | 4    |
| 24   | 70060-00105 | Bearing                            | 2    |
| 25   | O/L         | Hex. Bolt 3/8-16 x 1               | 12   |
| 26   | 70060-00516 | Bearing Mount                      | 1    |
| 27   | O/L         | Plate Washer 3/8 I.D.              | 4    |
| 28   | O/L         | Hex. Nut 5/16-24                   | 3    |
| 29   | 70060-00502 | Main Adjustment Rod                | 1    |
| 30   | 70060-00510 | Rod End                            | 1    |
| 31   | O/L         | Lock Washer 5/16 I.D.              | 9    |
| 32   | 70060-00517 | Base Plate Weldment                | 1    |
| 33   | 70060-00493 | Pivot Link                         | 1    |
| 34   | O/L         | Plate Washer 9/16 I.D.             | 4    |
| 35   | O/L         | Roll Pin 1/4 x 1-1/4               | 2    |
| 36   | 70060-00490 | Throw Link                         | 1    |
| 37   | 70060-00492 | Bottom Link Weldment               | 1    |
| 38   | 70060-00504 | Main Link                          | 1    |
| 39   | 70060-00503 | Link Bushing 5/8 O.D. x 3/8        | 1    |
| 40   | 70060-00491 | Linkage Mtg. Plate                 | 1    |
| 41   | 70060-00499 | Main Link Weldment                 | 1    |
| 42   | O/L         | Hex. Nut 5/16-18                   | 6    |
| 43   | O/L         | Cotter Pin 1/8 x 1                 | 1    |
| 44   | 70060-00518 | Main Pivot Shaft                   | 1    |
| 45   | 70060-00500 | Handle Weldment                    | 1    |
| 46   | 70060-00501 | Mounting Plate Weldment            | 1    |
| 47   | 70060-00496 | Hex. Bolt 10 mm - 1.250 x 25 mm    | 8    |
| 48   | 70060-00294 | Lock Washer 10 mm                  | 16   |
| 49   | O/L         | Cotter Pin 1/8 x 3/4               | 4    |
| 50   | 70060-00239 | Push Frame Weldment R.H.           | 1    |
| 51   | 70060-00240 | Push Frame Weldment L.H.           | 1    |
| 52   | 70060-00406 | Hex. Bolt 5/16-18 x 1              | 2    |
| 53   | 70060-00242 | Front Frame Weldment               | 1    |
| 54   | 70060-00296 | Hex. Bolt 10 mm - 1.250 x 20 mm    | 8    |
| 55   | 70060-00215 | Hex. Bolt 1/2-13 x 1-1/4           | 6    |
| 56   | O/L         | Lock Washer 1/2                    | 13   |
| 57   | O/L         | Hex. Nut 1/2-13                    | 13   |
| 58   | 70060-00284 | Hex. Bolt 1/2-13 x 3/4             | 6    |
| 59   | 70060-00152 | Bushing                            | 5    |
| 60   | 70060-00250 | Lift Arm Weldment                  | 1    |
| 61   | 70060-00156 | Mounting Bracket L.H.              | 1    |
| 62   | 70060-00155 | Mounting Bracket R.H.              | 1    |
| 63   | 70060-00498 | Hex. Bolt 5/16-18 x 2-1/2 Gr. 8    | 1    |
| 64   | O/L         | Crown Lock Nut 5/16-18             | 1    |
| 65   | 70060-00497 | Hex. Bolt 1/4-20 x 2-1/4 Gr. 8     | 1    |
| 66   | 70060-00214 | Lock Nut 1/4-20                    | 1    |
| 67   | 70060-00278 | P.T.O. Shaft                       | 1    |
| 68   | 70060-00253 | Blower Shield                      | 1    |
| 69   | O/L         | Hex. Bolt 5/16-18 x 1/2            | 2    |
| 70   | 70060-00283 | Plate Washer 11/32 I.D.            | 2    |
| 71   | 70060-00171 | Bracket Weldment                   | 1    |
| 72   | 70060-00210 | Hex. Bolt 1/2-13 x 4               | 1    |
| 73   | 70060-00252 | Spacer                             | 1    |
| 74   | 70060-00495 | Hyd. Cylinder                      | 1    |
| 75   | 70060-00246 | Top Link                           | 1    |
| 76   | 70060-00263 | Offset Wing 1/4 Turn               | 2    |
| 77   | 70060-00264 | Stop Retainer                      | 2    |
| 78   | 70060-00285 | Receptacle                         | 2    |
| 79   | O/L         | Hex. Bolt 5/16-18 x 3/4            | 4    |
| 80   | O/L         | Eye Bolt 1/4-20 x 3                | 1    |
|      |             | O/L: Obtain Locally                |      |

# P.T.O. SHAFT



| ITEM | PART No.    | DESCRIPTION                   | QUANTITY |
|------|-------------|-------------------------------|----------|
| 1    | 70060-00277 | Yoke 1-1/4" Bore              | 1        |
| 2    | 70060-00117 | Cross Bearing & Snap Ring Kit | 2        |
| 3    | 70060-00279 | Yoke & Square Bar Assembly    | 1        |
| 4    | 70060-00282 | Inner Shield                  | 1        |
| 5    | 70060-00522 | Bearing Half                  | 4        |
| 6    | 70060-00281 | Outer Shield                  | 1        |
| 7    | 70060-00280 | Yoke & Square Tube Assembly   | 1        |
| 8    | 70060-00116 | End Yoke                      | 1        |

# HYDRAULIC CYLINDER 70060-00495



| ITEM | PART NO.    | DESCRIPTION                | QTY. |
|------|-------------|----------------------------|------|
| 1    | 70060-00495 | Complete Cylinder Assembly | 1    |
| 2    | 70060-00524 | Barrel Assembly            | 1    |
| 3    | 70060-00418 | Gland                      | 1    |
| 4    | 70060-00419 | "O" Ring Back Up           | 1    |
| 5    | 70060-00420 | Snap Ring-Gland            | 1    |
| 6    | 70060-00421 | Snap Ring-Barrel           | 1    |
| 7    | 70060-00525 | Piston                     | 1    |
| 8    | 70060-00423 | "O" Ring Back Up           | 1    |
| 9    | 70060-00424 | 1/2-20 Locknut             | 2    |
| 10   | O / L       | Seal Kit                   | 1    |
| 11   | 70060-00425 | O / L: OBTAIN LOCALLY      | 1    |

This diagram shows the exploded view of a hydraulic cylinder assembly. The components are numbered as follows:

- 1: Main cylinder body
- 2: Hydraulic pump/motor unit
- 3: Hydraulic hoses
- 4: Hydraulic hoses
- 5: Hydraulic hoses
- 6: Bolt
- 7: Bolt
- 8: Bolt
- 9: Bolt
- 10: Hydraulic hose

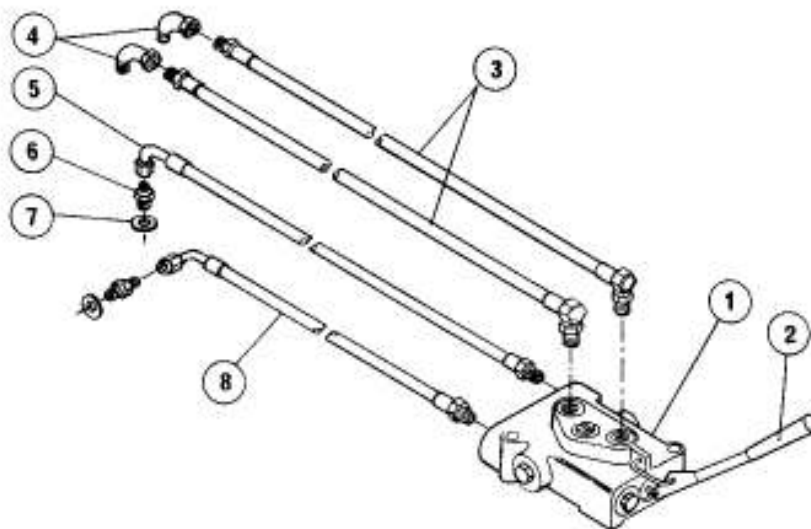
| ITEM | PART No.    | DESCRIPTION                   | QUANTITY |
|------|-------------|-------------------------------|----------|
| 1    | 70060-00237 | Hydraulic Valve Assembly      | 1        |
| 2    | 70060-00234 | Adaptor Block                 | 1        |
| 3    | 70060-00275 | Hydraulic Hose Assembly       | 2        |
| 4    | 70060-00274 | Hydraulic Hose Assembly       | 2        |
| 5    | O/L         | Street Elbow 1/4 x 1/4 N.P.T. | 2        |
| 6    | 70060-00469 | Hex. Bolt M8 x 60 mm DIN 931  | 4        |
| 7    | O/L         | Hex. Bolt 1/4-20 x 1-3/4"     | 2        |
| 8    | O/L         | Lock Washer 1/4"              | 2        |
| 9    | O/L         | Hex. Nut 1/4-20               | 2        |
| 10   | 70060-00474 | Control Lever                 | 1        |

| ITEM | PART No.    | DESCRIPTION                   | QUANTITY |
|------|-------------|-------------------------------|----------|
| 1    | 70060-00237 | Hydraulic Valve Assembly      | 1        |
| 2    | 70060-00234 | Adaptor Block                 | 1        |
| 3    | 70060-00275 | Hydraulic Hose Assembly       | 2        |
| 4    | 70060-00274 | Hydraulic Hose Assembly       | 2        |
| 5    | O/L         | Street Elbow 1/4 x 1/4 N.P.T. | 2        |
| 6    | 70060-00469 | Hex. Bolt M8 x 60 mm DIN 931  | 4        |
| 7    | O/L         | Hex. Bolt 1/4-20 x 1-3/4"     | 2        |
| 8    | O/L         | Lock Washer 1/4"              | 2        |
| 9    | O/L         | Hex. Nut 1/4-20               | 2        |
| 10   | 70060-00474 | Control Lever                 | 1        |

12

## HYDRAULIC SYSTEM [UNDER SEAT VALVE]

| Item                | Part No.    | Description                     | Qty. |
|---------------------|-------------|---------------------------------|------|
| 1                   | 70060-00237 | Hydraulic Valve                 | 1    |
| 2                   | 70060-00474 | Control Lever                   | 1    |
| 3                   | 70060-00274 | Hyd. Hose Assembly 84"          | 2    |
| 4                   | O/L         | Street Elbow 1/4 x 1/4 NPT      | 2    |
| 5                   | 70060-00508 | Hyd. Hose Assembly 34"          | 1    |
| 6                   | 70060-00509 | Adaptor 1/2 B.S.P. x 3/8 J.I.C. | 2    |
| 7                   | O/L         | Bonded Washer                   | 2    |
| 8                   | 70060-00507 | Hyd. Hose Assembly 22"          | 1    |
| O/L: Obtain Locally |             |                                 |      |



# MODEL B-222A

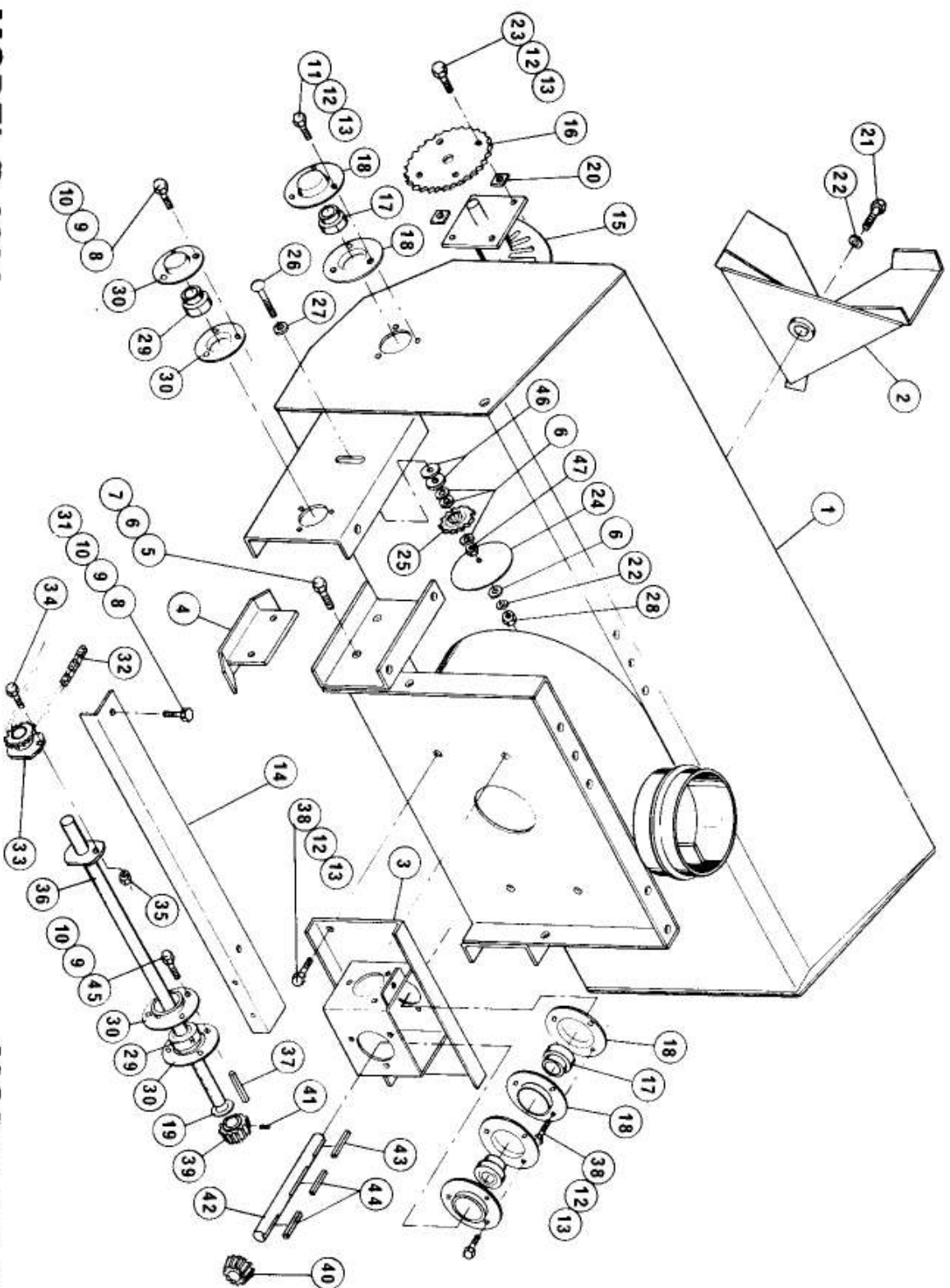
| Item | Part #      | Description                      | Qty. |
|------|-------------|----------------------------------|------|
| 1    | 70060-00462 | Moldboard Ass'y. (221)           | 1    |
| 2    | 70060-00142 | Moldboard Ass'y. (321)           | 1    |
| 3    | 70060-00101 | Impeller Weldment                | 1    |
| 4    | 70060-00144 | Gear Case                        | 1    |
| 5    | 70060-00149 | Skid Weldment                    | 2    |
| 6    | O / L       | Hex. Bolt 1/2" - 13" x 1 1/2"    | 4    |
| 7    | O / L       | Flat Washer 3/4" I.D.            | 2    |
| 8    | O / L       | Lock Nut 1/2" - 13"              | 3    |
| 9    | O / L       | Hex. Bolt 3/4" - 18" x 1 1/2"    | 2    |
| 10   | O / L       | Lock Washer 3/4"                 | 1    |
| 11   | O / L       | Hex. Nut 3/4" - 18"              | 1    |
| 12   | O / L       | Hex. Bolt 3/4" - 16" x 1 1/2"    | 2    |
| 13   | O / L       | Hex. Nut 3/4" - 16"              | 2    |
| 14   | 70060-00402 | Cross Shaft Shield (221)         | 1    |
| 15   | 70060-00468 | Cross Shaft Shield (321)         | 1    |
| 16   | 70060-00103 | Auger Ass'y (221)                | 1    |
| 17   | 70060-00136 | Auger Ass'y (321)                | 1    |
| 18   | 70060-00102 | Sprocket                         | 1    |
| 19   | 70060-00105 | Bearing                          | 1    |
| 20   | 70060-00104 | Flangette                        | 1    |
| 21   | 70060-00406 | Machinery Bushing                | 1    |
| 22   | 70060-00192 | Spacer                           | 1    |
| 23   | O / L       | Hex. Bolt 1/2" - 13" x 1 1/2"    | 1    |
| 24   | O / L       | Lock Washer 3/4"                 | 2    |
| 25   | O / L       | Hex. Bolt 3/4" - 16" x 1 1/2"    | 1    |
| 26   | 70060-00163 | Shield                           | 1    |
| 27   | 70060-00225 | Chain Idler                      | 2    |
| 28   | O / L       | Carrage Bolt 1/2" - 13" x 1 1/2" | 1    |
| 29   | O / L       | Flat Washer 1" I.D.              | 1    |
| 30   | O / L       | Hex. Nut 1/2" - 13"              | 1    |
| 31   | 70060-00107 | Bearing                          | 1    |
| 32   | 70060-00106 | Flangette                        | 1    |
| 33   | O / L       | Flat Washer 1" I.D.              | 1    |
| 34   | 70060-00224 | Roller Chain                     | 1    |
| 35   | 70060-00109 | Sprocket - Auger Drive           | 2    |
| 36   | O / L       | Shear Bolt 1/2" - 20"            | 1    |
| 37   | O / L       | Lock Nut 1/2" - 20"              | 1    |
| 38   | 70060-00154 | Cross Shaft (221)                | 1    |
| 39   | 70060-00165 | Cross Shaft (321)                | 1    |
| 40   | 70060-00226 | Key 1/2" x 3/4" x 1 1/2"         | 1    |
| 41   | O / L       | Hex. Bolt 1/2" - 16" x 1 1/2"    | 2    |
| 42   | 70060-00111 | Bevel Gear - 19 Teeth Bore       | 1    |
| 43   | 70060-00112 | Bevel Gear - 19 Teeth Bore       | 1    |
| 44   | O / L       | Set Screw 3/16" x 1 1/2"         | 1    |
| 45   | 70060-00113 | Rotor Shaft                      | 1    |
| 46   | 70060-00230 | Key 1/2" x 1" x 3"               | 1    |
| 47   | 70060-00228 | Key 1/2" x 1" x 1 1/2"           | 2    |
| 48   | O / L       | HEX. BOLT 5/16-18 x 1            | 3    |
| 49   | 70060-00403 | SPACER                           | 2    |
| 50   | O / L       | Jam Nut 1/2-2-13                 | 1    |

O / L: OBTAIN LOCALLY

| Item | Part #      | Description                             | Nbre |
|------|-------------|-----------------------------------------|------|
| 1    | 70060-00462 | Versor (221)                            | 1    |
| 2    | 70060-00142 | Versor (321)                            | 1    |
| 3    | 70060-00144 | Cartier d'engrenages                    | 1    |
| 4    | 70060-00149 | Soulet de dérapage                      | 2    |
| 5    | O / L       | Boulon hex 1/2" - 13" x 1 1/2"          | 4    |
| 6    | O / L       | Rondelle plate 3/4" D.I.                | 5    |
| 7    | O / L       | Contre-écrou 1/2" - 13"                 | 4    |
| 8    | O / L       | Boulon hex 3/4" - 18" x 1 1/2"          | 5    |
| 9    | O / L       | Rondelle-tren 3/4"                      | 8    |
| 10   | O / L       | Ecrou hex 3/4" - 18"                    | 8    |
| 11   | O / L       | Boulon hex 3/4" - 16" x 1 1/2"          | 6    |
| 12   | O / L       | de long                                 |      |
| 13   | O / L       | Ecrou hex de 3/4" - 16"                 | 20   |
| 14   | O / L       | Rondelle-tren                           | 20   |
| 15   | 70060-00468 | Protecteur de l'arbre transversal (221) | 1    |
| 16   | 70060-00102 | Pignon                                  | 1    |
| 17   | 70060-00105 | Pignon                                  | 2    |
| 18   | 70060-00104 | Collette                                | 8    |
| 19   | 70060-00406 | Coussinet                               | 1    |
| 20   | 70060-00162 | Cale d'épaisseur                        | 4    |
| 21   | O / L       | Boulon hex 1/2" - 13" x 1 1/2"          | 1    |
| 22   | O / L       | Rondelle-tren 1/2"                      | 1    |
| 23   | O / L       | Boulon hex 3/4" - 16" x 1 1/2"          | 4    |
| 24   | 70060-00163 | Protecteur de long                      | 1    |
| 25   | 70060-00225 | Tendeur de la chaîne                    | 1    |
| 26   | O / L       | Boulon de car 1/2" - 13" x 2 1/2"       | 1    |
| 27   | O / L       | Rondelle plate 1" D.I.                  | 1    |
| 28   | O / L       | Ecrou hex 1/2" - 13"                    | 1    |
| 29   | 70060-00107 | Bearing                                 | 1    |
| 30   | 70060-00106 | Flangette                               | 1    |
| 31   | O / L       | Flat Washer 1" I.D.                     | 1    |
| 32   | 70060-00224 | Roller Chain                            | 1    |
| 33   | 70060-00109 | Sprocket - Auger Drive                  | 2    |
| 34   | O / L       | Shear Bolt 1/2" - 20"                   | 1    |
| 35   | O / L       | Lock Nut 1/2" - 20"                     | 1    |
| 36   | 70060-00154 | Cross Shaft (221)                       | 1    |
| 37   | 70060-00165 | Cross Shaft (321)                       | 1    |
| 38   | 70060-00226 | Key 1/2" x 3/4" x 1 1/2"                | 1    |
| 39   | O / L       | Hex. Bolt 1/2" - 16" x 1 1/2"           | 2    |
| 40   | 70060-00111 | Bevel Gear - 19 Teeth Bore              | 1    |
| 41   | 70060-00112 | Bevel Gear - 19 Teeth Bore              | 1    |
| 42   | O / L       | Set Screw 3/16" x 1 1/2"                | 1    |
| 43   | 70060-00113 | Rotor Shaft                             | 1    |
| 44   | 70060-00230 | Key 1/2" x 1" x 3"                      | 1    |
| 45   | 70060-00228 | Key 1/2" x 1" x 1 1/2"                  | 2    |
| 46   | O / L       | HEX. BOLT 5/16-18 x 1                   | 3    |
| 47   | O / L       | Jam Nut 1/2-2-13                        | 1    |

O / L: OBTENIR LOCALEMENT

MODELE B-222A



MODEL B-222A

MODELE B-222A