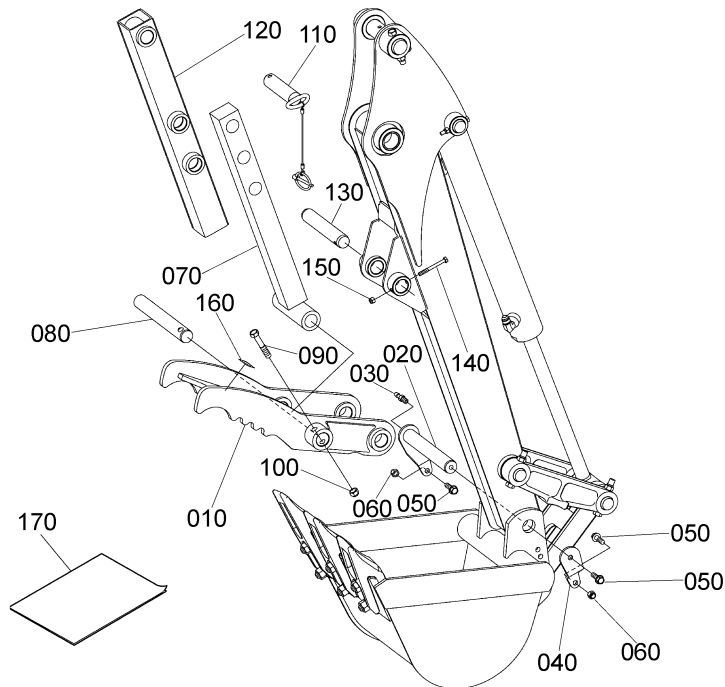


INSTRUCTION MANUAL BX6316 MECH. THUMB (7K525-84101) for KUBOTA BACKHOE BT602



4FBAAAHAP002A

IMPORTANT :

- Nuts (100, 150) : Do not tighten firmly. Gap between boss and nut should be 2 to 3 mm (0.08 to 0.12 in.).
- Nut (060) : Tighten to the following torque : 9.8 to 11.2 N-m (1.0 to 1.14 kgf-m, 7.2 to 8.3 ft-lbs)
- Bolts (050, 090, 140) : Make sure not to confuse the set-up direction of bolts.
- Pins (020, 080, 130) : Apply a small amount of multipurpose grease.

Parts List

REF. No.	PART No.	PART NAME	Q'TY	REMARKS
010	7K525-8411-0	THUMB	1	
020	7K525-8425-3	PIN (25X179, THUMB)	1	
030	75599-81521	FITTING, GREASE (1/4-28T.T.*.68)	1	
040	7K525-8424-3	PLATE (FULCRUM PIN)	1	
050	01754-50625	BOLT, FLANGE	3	7T
060	02552-50060	NUT, LOCKING	2	6T
070	7K525-8428-0	LINK (1, ADJUST)	1	
080	7K525-8426-0	PIN (25X190, THUMB)	1	
090	01173-51055	HEX.BOLT	1	7T
100	02574-50100	NUT, LOCKING	1	6T
110	7K504-8438-0	PIN, SET ADJUST	1	
120	7K525-8429-0	LINK (2, ADJUST)	1	
130	75596-14152	PIN (0.98*5.90)	1	
140	01053-50655	HEX.BOLT	1	7T
150	02552-50060	NUT, LOCKING	1	6T
160	7K523-8452-0	LABEL, WARNING THUMB	1	
170	7K525-8453-0	MANUAL, INST. (E, BX6316)	1	This paper