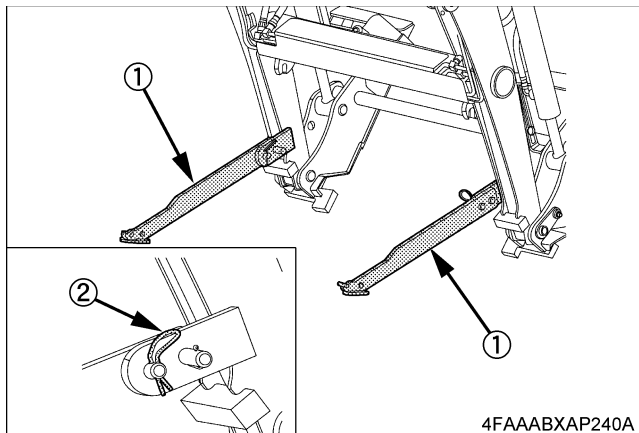


4. Remove the spring pins holding the stands to the boom.
5. Rotate the stands until the pin on the stand and hole in the boom are aligned.  
Then slide the stands outward and insert the cotter pin as shown.

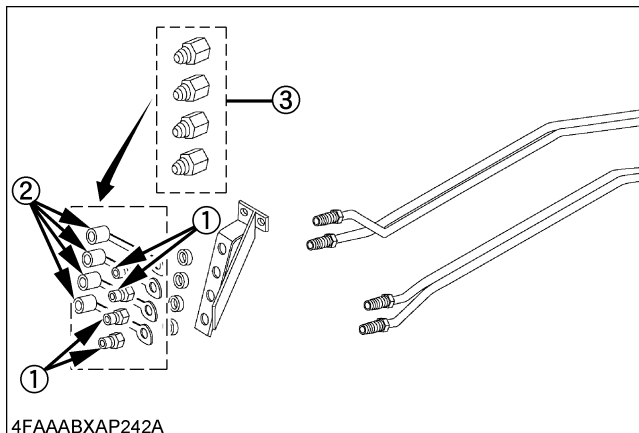


(1) Stand

(2) Cotter pin

### ■ Preparation for Hydraulic Line on Tractor Side [MSL kit and Swift-tach kit Only]

Remove the couplers and caps from the tractor tubes as shown below. Reapply seal tape and attach the adapters.



- (1) Coupler
- (2) Cap
- (3) Adapter

### ■ Preparation for Hydraulic Line on Tractor Side [Except LX3310, LX2610, LX2610SU]

Check the manufacturer of the hydraulic couplers (male) on the tractor side and the hydraulic couplers (female) on the loader side. If they are not identical, it is necessary to replace the hydraulic couplers (male) on the tractor side as follows. The combination of different manufacturers will lead to poor performance.

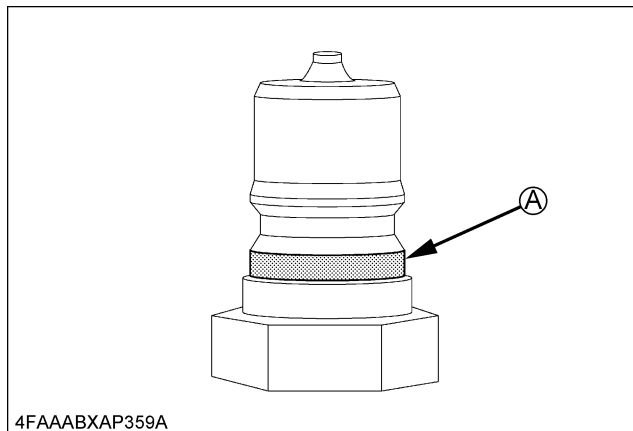
Old	7J612-6622-0	1/4 NIPPLE HNV14NPTM	4 ea.
-----	--------------	----------------------	-------



New	K2581-6622-0	1/4 NIPPLE H2-63	4 ea.
-----	--------------	------------------	-------

#### NOTE :

- The difference between two couplers can also be confirmed by stamps as shown in the figure.



(A) Old: "HNV14NPTM"  
New: "H2-63"