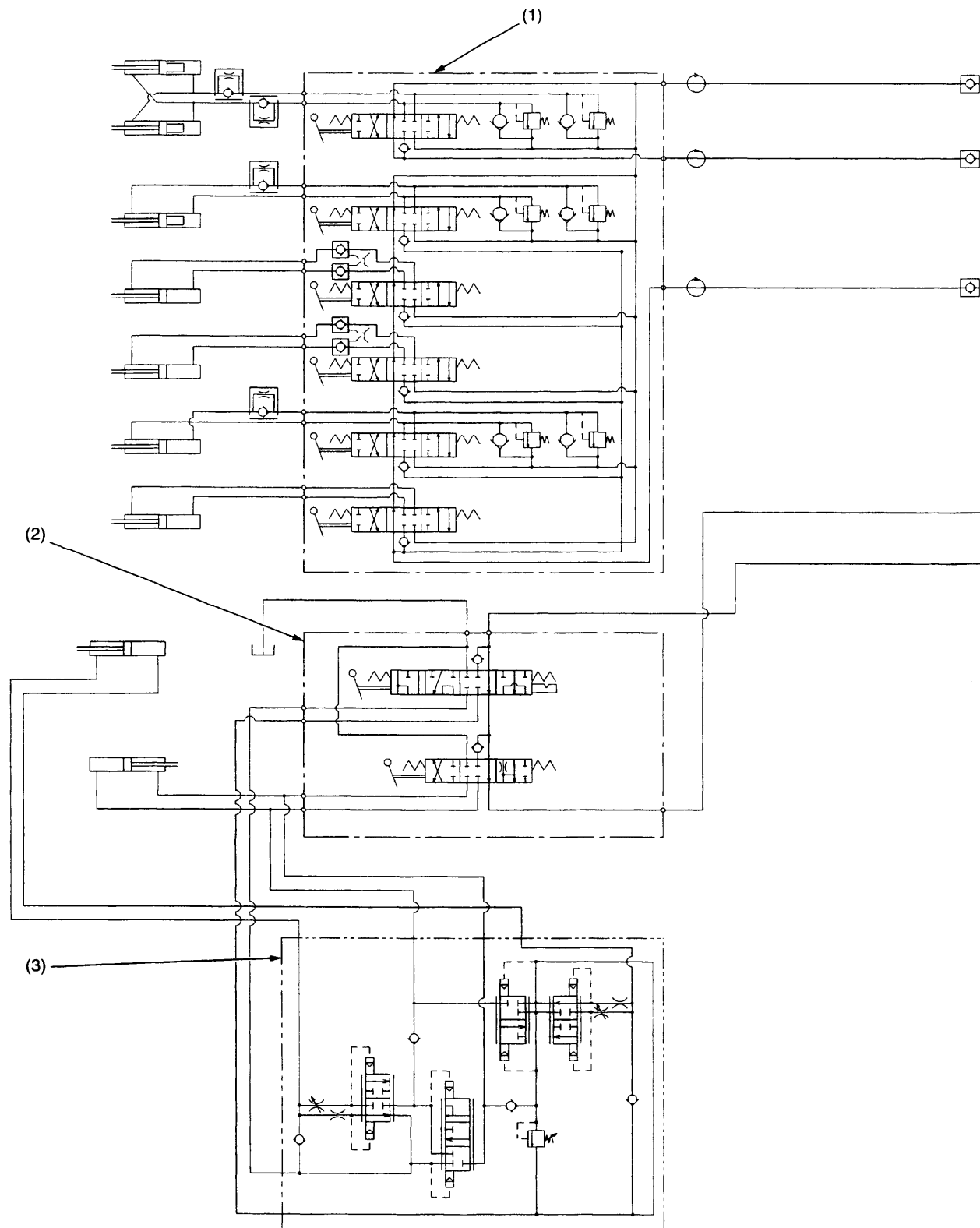
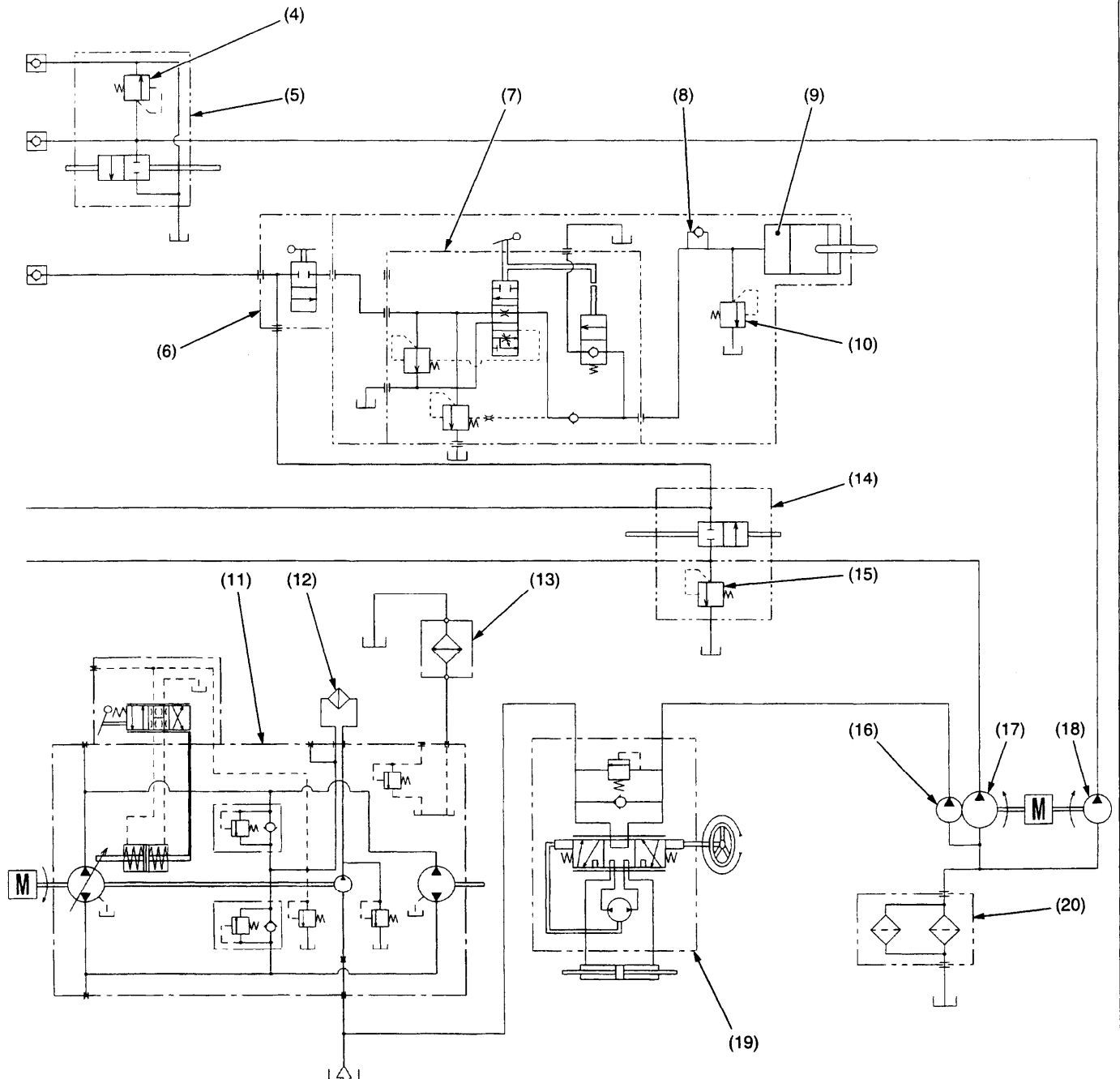


1. HYDRAULIC CIRCUIT



T12610HY00101

- | | | | |
|--------------------------------|-------------------------|------------------------------------|----------------------------|
| (1) Backhoe Control Valve | (4) Relief Valve 2 | (7) Position Control Valve | (10) Cylinder Safety Valve |
| (2) Front Loader Control Valve | (5) Directional Valve 2 | (8) Lowering Speed Adjusting Valve | (11) HST |
| (3) Self-leveling Valve | (6) Directional Valve 1 | (9) Hydraulic Cylinder | (12) Oil Filter (for HST) |



(13) Oil Cooler
(14) Front Hydraulic Block

(15) Relief Valve 1
(16) Hydraulic Pump 2

(17) Hydraulic Pump 1
(18) Hydraulic Pump 3

(19) Steering Controller
(20) Oil Filter