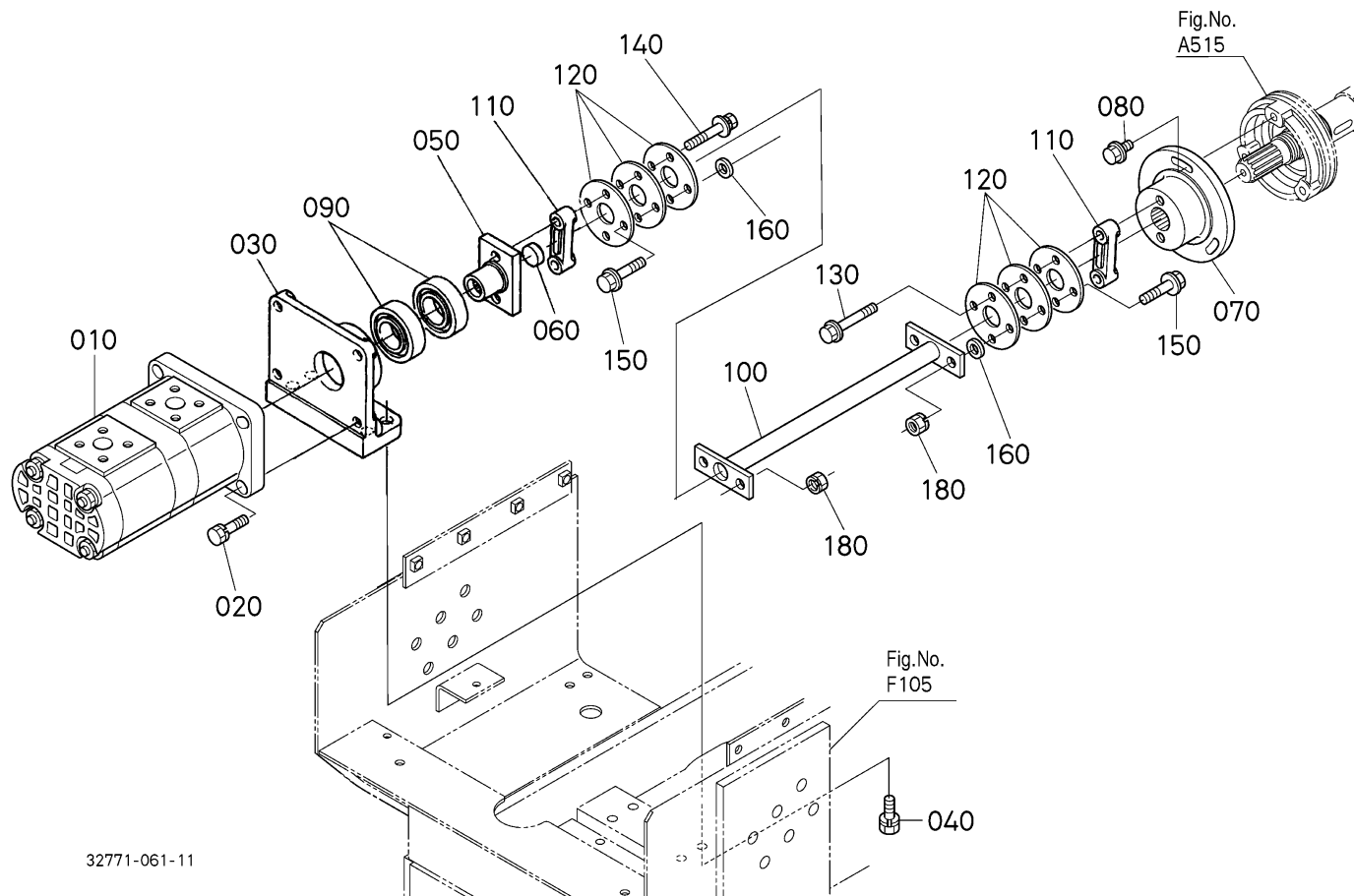


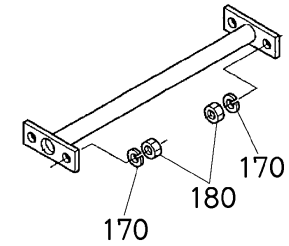
L48 -> HYDRAULIC SYSTEM -> H13000 HYDRAULIC PUMP(FRONT) ## L48

Update Date: 07/28/2014, Printing Date: 09/19/2015



32771-061-11

OLD PARTS



32771-832-10

Interchangeable =, Not Interchangeable NI, New for Old >>, Old for New <<

No	Part Number	Part Name	Qty	IC	S/N	Remarks	lbs
010	32771-76200	PUMP, HYDRAULIC	1				10.604
020	01123-50835	BOLT, SEMS	4				0.044
030	32751-10890	BRACKET, FRONT PUMP	1				3.3
040	01133-51030	BOLT, SEMS	4				0.055
050	32751-10910	COUPLING	1				0.462
060	06311-75020	PLUG, EXPANSION	1				0.0088
070	32771-10920	COUPLING	1				2.2
080	01754-50818	BOLT, FLANGE	3				0.0242
090	32590-10830	BEARING, BALL	2				0.22
100	32771-10930	SHAFT, COUPLING	1		<=60260	32771-9970-2 IMPROVED KIT	1.144
100	32771-10932	SHAFT, COUPLING	1	>>	>=60261	32771-9970-2 IMPROVED KIT	1.144
110	31351-17870	SPACER	2				0.066
120	31351-17880	DISK, COUPLING	6				0.022
120	32771-10850	PLATE, COUPLING	6	=			0.0198
130	01754-50840	BOLT, FLANGE	2				0.044
140	01125-50835	BOLT, W SEMS	2				0.0374
150	01754-50825	BOLT, FLANGE	4				0.022
160	04013-50080	WASHER, PLAIN	4				0.0066
170	04512-60080	WASHER, SPRING	4		<=61430		0.0044
180	02114-50080	HEX. NUT	4		<=61430		0.011
180	16429-92010	NUT WITH LOCK WASHER	4	>>	>=61431		0.0154