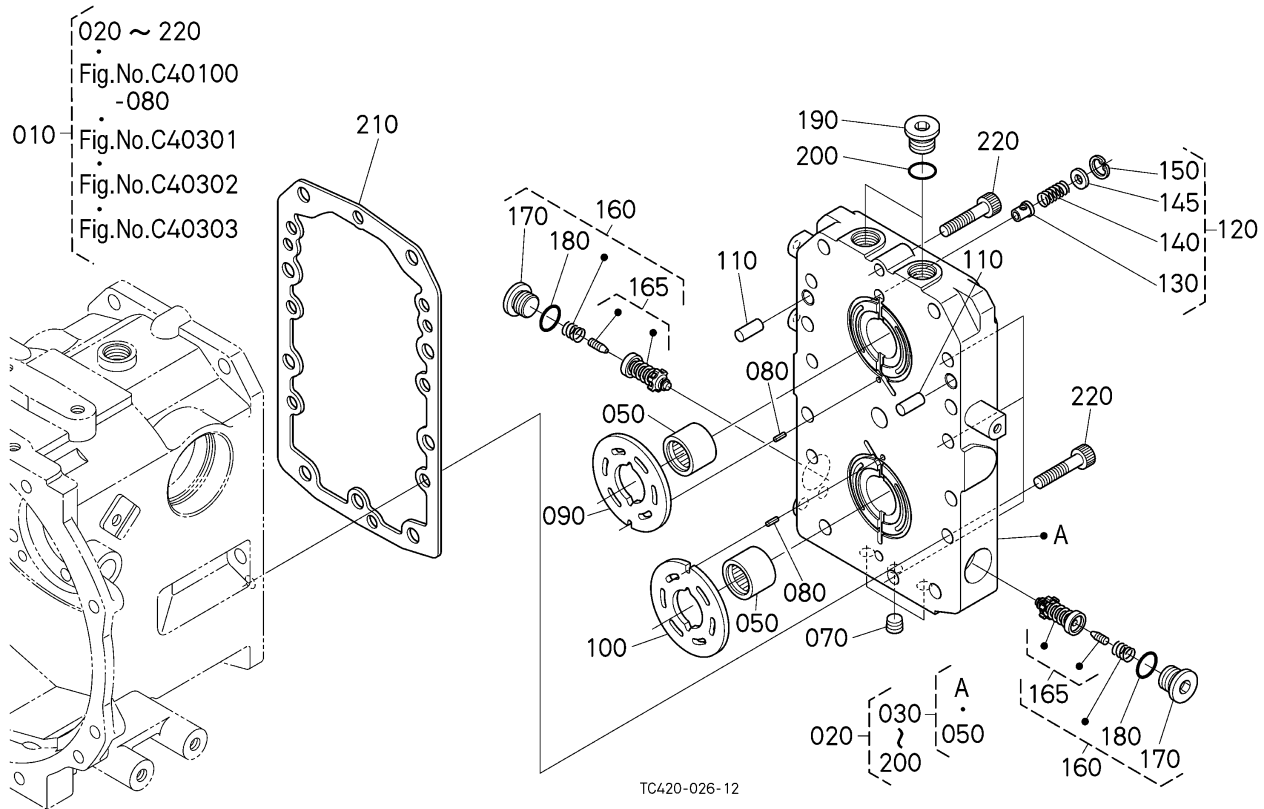


L3200H -> CLUTCH/TRANSMISSION -> C40304 HST (VALVE) [COMPONENT PARTS] ## L3200H

Update Date: 02/28/2018, Printing Date: 11/21/2018



L3200H -> CLUTCH/TRANSMISSION -> C40304 HST (VALVE) [COMPONENT PARTS] ## L3200H

Update Date: 02/28/2018, Printing Date: 11/21/2018

Interchangeable =, Not Interchangeable NI, New for Old >>, Old for New <<

No	Part Number	Part Name	Qty	RoundUp	IC	S/N	Remarks	Kg
010	TC420-59990	ASSY HST	1			<=79999		99.0
010	TC420-59992	ASSY HST	1		>>	>=80001		99.0
020	TC420-58902	ASSY,COVER,PORTBLOCK	1					27.5
030	TC420-58950	COMP.COVER	1					26.4
050	52807-11160	BEARING,NEEDLE	2					0.1034
070	K7001-39620	PLUG	3					0.0132
080	05411-00414	PIN,SPRING	2					0.0022
090	TC420-58930	PLATE, VALVE	1					0.352
100	TC420-58970	PLATE, VALVE	1					0.33
110	TC220-58920	PIN,STRAIGHT	2					0.0264

L3200H -> CLUTCH/TRANSMISSION -> C40304 HST (VALVE) [COMPONENT PARTS] ## L3200H

Update Date: 02/28/2018, Printing Date: 11/21/2018

Interchangeable =, Not Interchangeable NI, New for Old >>, Old for New <<

No	Part Number	Part Name	Qty	RoundUp	IC	S/N	Remarks	Kg
120	TD170-58950	ASSY VALVE	1					0.022
130	TD170-58960	POPPET,L	1					0.0132
140	66363-39720	SPRING(L)	1					0.0066
145	66363-39740	WASHER	1					0.0022
150	04611-00180	CIR-CLIP,INTERNAL	1					0.0022
160	TC420-59402	ASSY VALVE,RELIEF	2					0.209
165	TC420-59452	COMP.VALVE,RELIEF	2					0.099
170	5H600-11820	PLUG(GPF1/2)	2					0.088
180	04817-00180	O RING	2					0.0022
190	5H600-12620	PLUG,GPF3/8	2					0.0484
200	04817-00140	O RING	2					0.0022
210	TC220-58190	GASKET	1					0.0264
220	01315-11045	BOLT,SOCKET HEAD	8					0.077