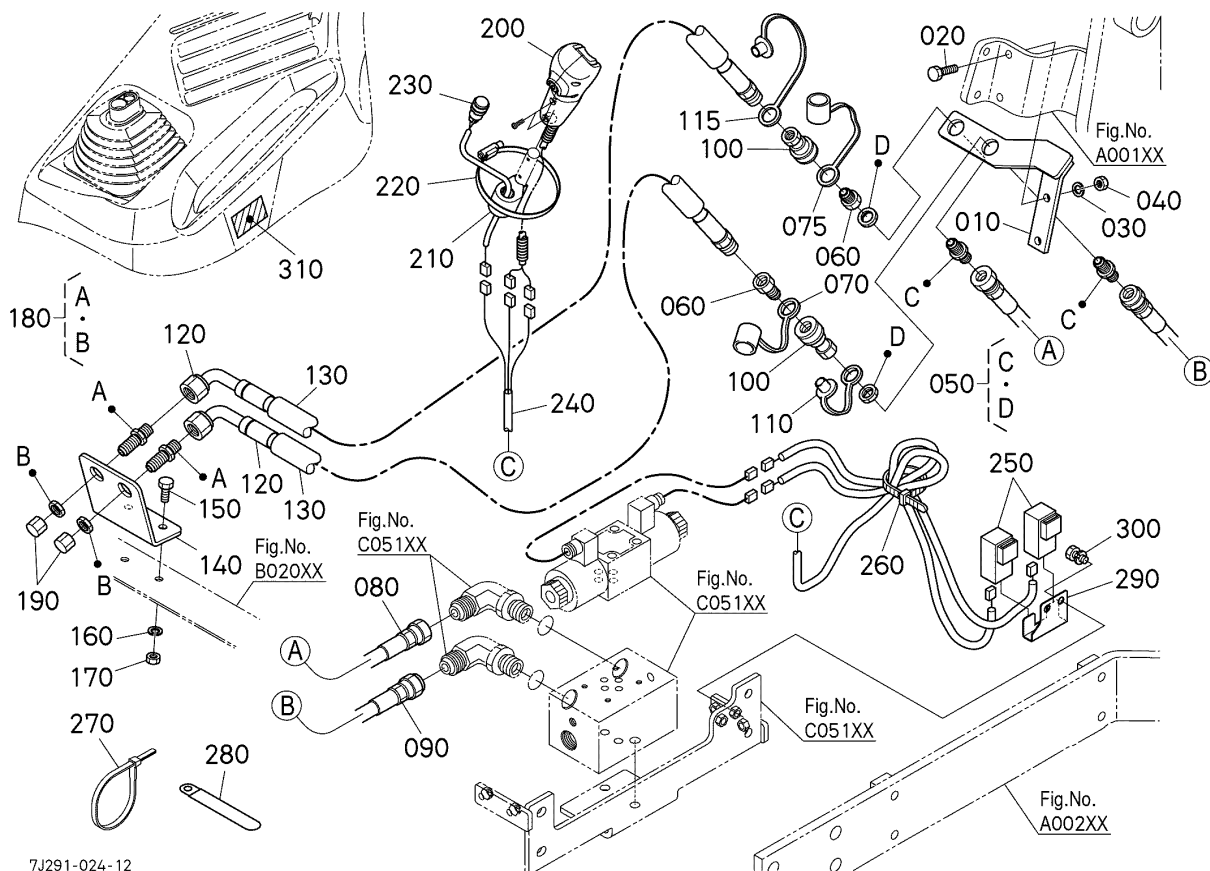


LA805 -> OPTION -> C05201 3RD FUNCTION VALVE 2 [OPTION] ## [L2265]  
(FOR LA805 & LA1055) ## LA805

Update Date: 09/15/2020, Printing Date: 10/07/2021



LA805 -> OPTION -> C05201 3RD FUNCTION VALVE 2 [OPTION] ## [L2265] (FOR  
LA805 & LA1055) ## LA805

Update Date: 09/15/2020, Printing Date: 10/07/2021

Interchangeable =, Not Interchangeable NI, New for Old >>, Old for New <<

No	Part Number	Part Name	Qty	RoundUp	IC	S/N	Remarks	Kg
010	7J292-84310	STAY(3RD,STD.)	1					0.0
020	01153-50830	HEX.BOLT	2					0.0286
030	04512-50080	WASHER,SPRING LOCK	2					0.0044
040	02114-50080	HEX.NUT	2					0.011
050	7J417-71180	ASSY,ADAPTER	2					0.0
060	7J417-66220	3/8 NIP HNV28NPTM	2					0.1188
070	7J290-66450	CAP(DUST 3/8,GREEN)	1				GREEN	0.0
075	7J290-66460	CAP(DUST 3/8,GREY)	1				GRAY	0.0
080	7J292-84120	HOSE(3RD-1A,HYD.3000	1			<=A8408		0.0
080	7J999-99960	HOSE(E 775 E 06 3)	1		>>	>=A8409		0.0
090	75563-66640	HOSE 11,HYDRAULIC	1			<=A8408		0.7436

LA805 -> OPTION -> C05201 3RD FUNCTION VALVE 2 [OPTION] ## [L2265] (FOR  
LA805 & LA1055) ## LA805

Update Date: 09/15/2020, Printing Date: 10/07/2021

Interchangeable =, Not Interchangeable NI, New for Old >>, Old for New <<

No	Part Number	Part Name	Qty	RoundUp	IC	S/N	Remarks	Kg
090	7J999-99350	HOSE(E 673 E 06 3)	1		>>	>=A8409		0.0
100	7J417-66320	COUPLER HNV38NPTF	2					0.4664
110	7J290-66350	PLUG(DUST 3/8, GREEN)	1				GREEN	0.0
115	7J290-66360	PLUG(DUST 3/8, GREY)	1				GLAY	0.0
120	7J292-84260	HOSE(3RD-2AB, HYD.300	2			<=A0520		0.0
120	7J292-84262	HOSE(3RD-2AB, HYD.3000)	2		>>	>=A0521		0.0
120	7J999-99950	HOSE(U 2750 G 06 3)	2		>>	>=A8409		0.0
130	75567-76520	SLEEVE PSB17 (100.0)	2			<=A0520		0.407
130	7J292-84280	SLEEVE(PSP17, 2700)	2		>>	>=A0521		0.0
140	7J292-84432	STAY(3RD, FRONT STD.)	1					0.0
150	01153-50820	HEX.BOLT	2					0.0264
160	04512-50080	WASHER, SPRING LOCK	2					0.0044
170	02114-50080	HEX.NUT	2					0.011
180	7J417-71170	ASSY, ADAPTER	2					0.2596
190	7J800-64800	1/2-14CAP, 5406-C-08	2				1/2-14, 5406-C-08	0.2574
200	7J292-84030	GRIP(3RD)	1			<=A7193		0.5192
200	7J292-84032	GRIP(3RD)	1		>>	>=A7194		0.5192
200	7J292-84035	GRIP(3RD)	1		>>	>=B3908		0.5192
210	7J292-84180	STAY(SWITCH, 3RD)	1					0.0
220	75582-66362	BAND #62012B	1					0.0
230	7J056-84150	SWITCH(3RD VALVE)	1			<=A8731		0.11
230	7J056-84152	SWITCH(3RD VALVE)	1		>>	>=A8732		0.11
240	7J292-84110	HARNESS, WIRE(MAIN, 3R	1					0.484
250	T1060-33720	RELAY	2					0.044
260	53581-64150	BAND, CORD	4					0.0044
270	75590-64650	BAND, CORD	5					0.022
280	12234-67580	CLAMP, CORD	2					0.0264
290	7J292-84190	STAY(RELAY, 3RD)	1					0.0
300	01123-50816	BOLT, SEMS	2					0.0242
310	7J292-84160	LABEL(SWITCH, 3RD)	1					0.0