

Paints

Kubota Paint is a general purpose finishing enamel. It was developed as a fast drying, versatile, industrial coating paint for manufacturers of metal products. This enamel offers a quick dry time, high gloss, and good color and gloss retention. Kubota paints are ideal for industrial OEM uses, including agricultural and construction equipment.

Specifications	Color Chart
----------------	-------------

Kubota Paints

Kubota® Genuine Parts are designed and engineered to original factory specifications. For reliable, long-lasting performance of your Kubota® equipment, look for Kubota® Genuine Parts.

Kubota® Paints for use on the machinery after sale have been designed to factory standards for color and appearance with ease of application. The paints are available in aerosol cans, and in many colors, quarts and gallons.

Directions for Use:

This acrylic or alkyd (depending on color) system has been developed as a fast drying, versatile, finishing enamel for use on Kubota® equipment after the sale. It offers quick dry times, high gloss with good color and gloss retention.

Surface Preparation:

Service expectancy of any coating system is primarily dependent upon good surface preparation. The substrate to be coated should be free of rust, mill scale, oil and other contaminants, including salt deposits. Smooth edges of scratches, chips, etc. with fine sand paper before spraying. A primer may be required for long-term protection.

Reduction:

This coating system can be reduced with most aromatic solvents. Use Xylene as a fast reducer in normal and cool conditions and D-100 as a reducer in warmer conditions to prevent dusting. For air spray, reduce 20% to 30% by volume, and for airless or air-assisted airless, reduce up to 15%. NO REDUCTION IS NECESSARY FOR AEROSOL PACKAGING.

Application:

Spray the reduced material or aerosol can in several light coats spaced 5 to 10 minutes apart. Do not try and cover completely in heavy coats or material will run and sag. Do not attempt to cover in one coat.

Dry Time:

The system will dry to touch in 30 minutes and can be recoated up to 8 hours. After 8 hours, apply a small test patch to check evidence of lifting before proceeding with a full recoat. Wait a minimum of 24 hours before buffing. Dry time is dependent upon temperature and humidity.

Typical Properties (varies by color):		Solvent Content (Typical):
Weight Solids:	48%	Xylene
Volume Solids	36%	Aromatic 100
VOC's	4.40 lbs/gal (bulk)	VM&P Naphtha
Coverage	580 ft2/gal at 1 mil	Mineral Spirits



Genuine Paint

COLORS AVAILABLE



Kubota® Orange

Touch-up: 70000 - 73710
Spray: 70000 - 73767
Quart: 70000 - 73708
Gallon: 70000 - 73709



Kubota® Orange II

Touch-up: 70000 - 73768
Spray: 70000 - 73713
Quart: 70000 - 73712
Gallon: 70000 - 73711



Kubota® Blue Enamel

Spray: 70000 - 00197
Quart: 70000 - 00199
Gallon: 70000 - 00200



KH Excavator Blue

Touch-up: 70000 - 73293
Spray: 70000 - 16681
Quart: 70000 - 16684



KX Excavator Blue

Spray: 70000 - 73736
Quart: 70000 - 73735



KX-3 Dark Blue

Spray: 70000 - 00188
Quart: 70000 - 02668
Gallon: 70000 - 02669



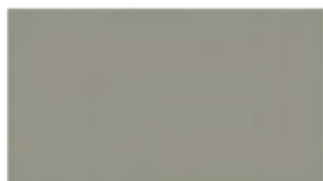
K008 Excavator Blue

Spray: 70000 - 70474



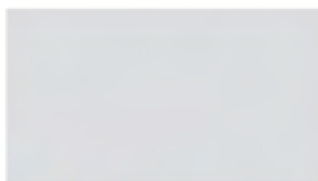
Dark Grey Enamel

Spray: 70000 - 00210
Quart: 70000 - 73358
Gallon: 70000 - 73296



Interior Grey

Spray: 70000 - 00191
Quart: 70000 - 00190
Gallon: 70000 - 00189



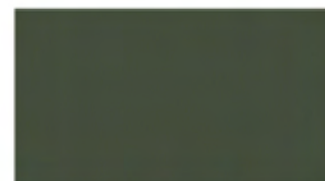
Light Grey Enamel

Spray: 70000 - 73878
Quart: 70000 - 73877



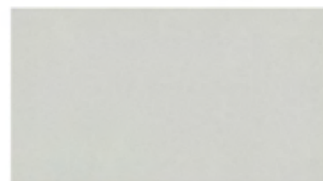
ROPS Grey

Spray: 70000 - 73806



Dark Grey Semi-Gloss

Spray: 70000 - 73352
Quart: 70000 - 73353
Gallon: 70000 - 73354



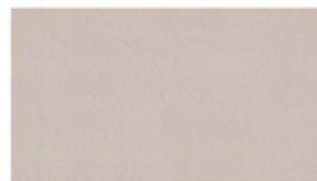
Silver Metallic

Spray: 70000 - 73766



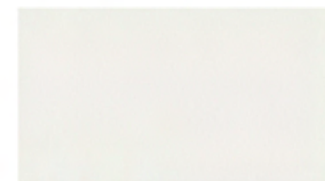
Beige Enamel

Spray: 70000 - 00195



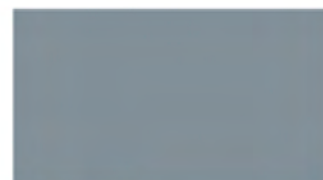
Off-White Enamel

Spray: 70000 - 00211



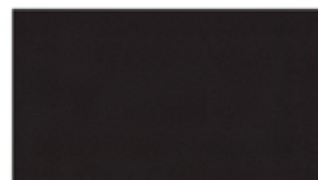
White Enamel

Spray: 70000 - 73758



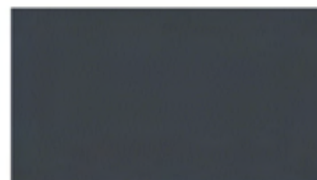
Grey Primer

Spray: 70000 - 00371
Quart: 70000 - 00372
Gallon: 70000 - 00373



Black Enamel

Gallon: 70000 - 00017



Ebony Chrome

Spray: 77700 - 03528
Quart: 77700 - 03581
Gallon: 77700 - 03529

NOTE: Colors shown are produced as close as modern printing techniques permit, and are only approximate representations of the actual colors.