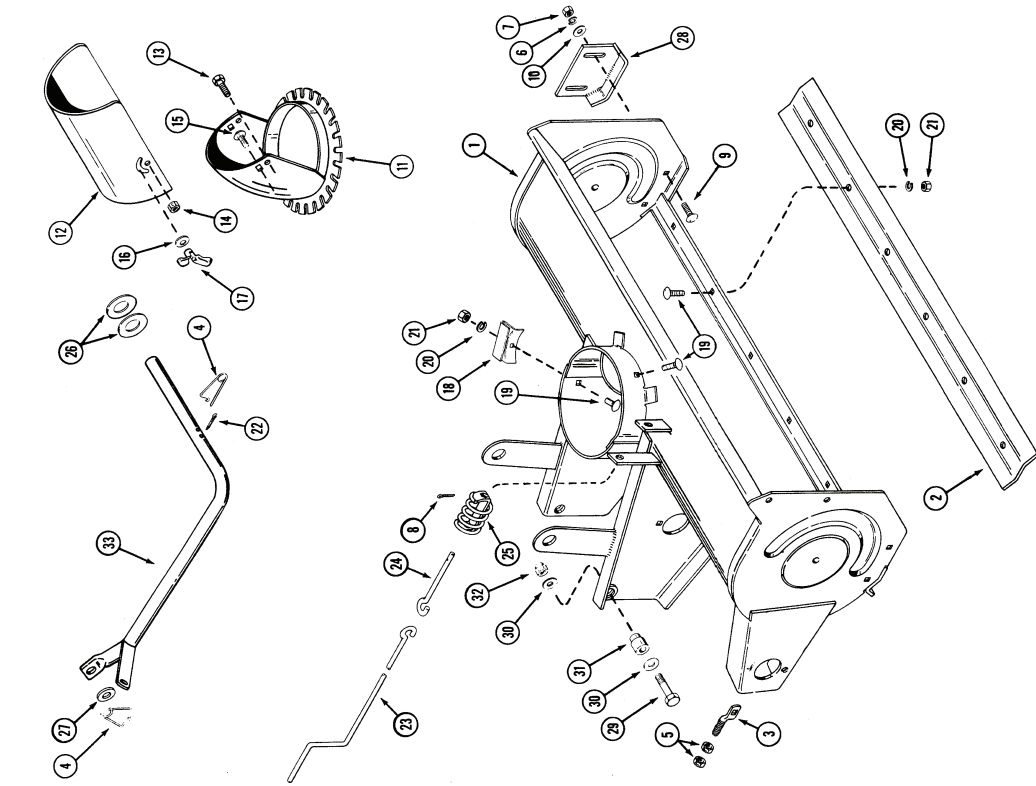


AUGER, HOUSING, CHUTE CONTROL AND LIFT ASSEMBLY
For S80, S84

MODEL J, K, L, M, N, P, R, S (80)(84) SNOWCASTER
AUGER, HOUSING, CHUTE CONTROL AND LIFT ASSEMBLY
For S80, S84



REF.	PART NO.	DESCRIPTION	REQ'D
1	NSS	HOUSING - auger 38" (S80) (use C31899, C32391)	1
2	C17776	HOUSING - auger 48" (S84) (use C31900, C32391)	1
3	C17878	BLADE - snow blower (S84)	1
4	C29877	SCREW - snow blower (S80)	1
5	C10898	PIN - chain adjust	1
6	129-163	PIN - safety	2
7	192-21	NUT - 3/8" - 24 lock	2
8	131-938	LOCKWASHER - 3/8" ZP (early production)	4
9	132-300	NUT - 3/8" NC hex ZP	4
10	111-371	PIN - cotter 1/8" x 7/8"	1
11	111-340	BOLT - 3/8" x 1" NC round head, long square neck	4
12	195-525	BOLT - 3/8" - 16 x 3/4" carriage	4
13	C15248	WASHER - 3/8" ZP	4
14	C16940	CHUTE	1
15	113-1	DEFLECTOR	1
16	131-1102	BOLT - 1/4" x 1/2" NC hex ZP	2
17	111-340	NUT - lock 1/4" NC hex ZP	2
18	C28263	BOLT - 3/8" x 3/4" NC round head, short square neck	2
19	C22774	WASHER - dished 25/64 x 1" O.D.	2
20	C15334	WINGNUT - deflector locking	2
21	111-132	BRACKET - chute hold down	3
22	192-20	BOLT - 5/16" x 3/4" NC roundhead, square neck	UAR
23	131-911	LOCK WASHER - 5/16" ZP (early production)	UAR
24	132-332	NUT - 5/16" NC hex ZP flange	UAR
25	C24644	PIN - cotter	1
26	C24643	CRANK - chute	1
27	195-2134	ROD - chute, control	1
28	C17775	COIL - chute, control	1
29	113-421	WASHER - 1-3/16" x 2-1/4" ZP	1
30	195-533	WASHER - 21/32" x 5/16" ZP	2
31	131-165	SKID - shoe	1
32	C31995	BOLT - 1/2" x 2" NC hex	2
33		WASHER - 1/2"	4
		BUSHING - pivot	2
		NUT - lock 1/2" hex crown	2
		ARM - lift	1

C33228 conversion kit for 38"
C33229 conversion kit for 48"
to use on 3000, 4000 series tractors

NOTE: If this snow caster has been converted
to fit on 3000, 4000 series tractors, see model SB38G and SB48
snow caster for parts.