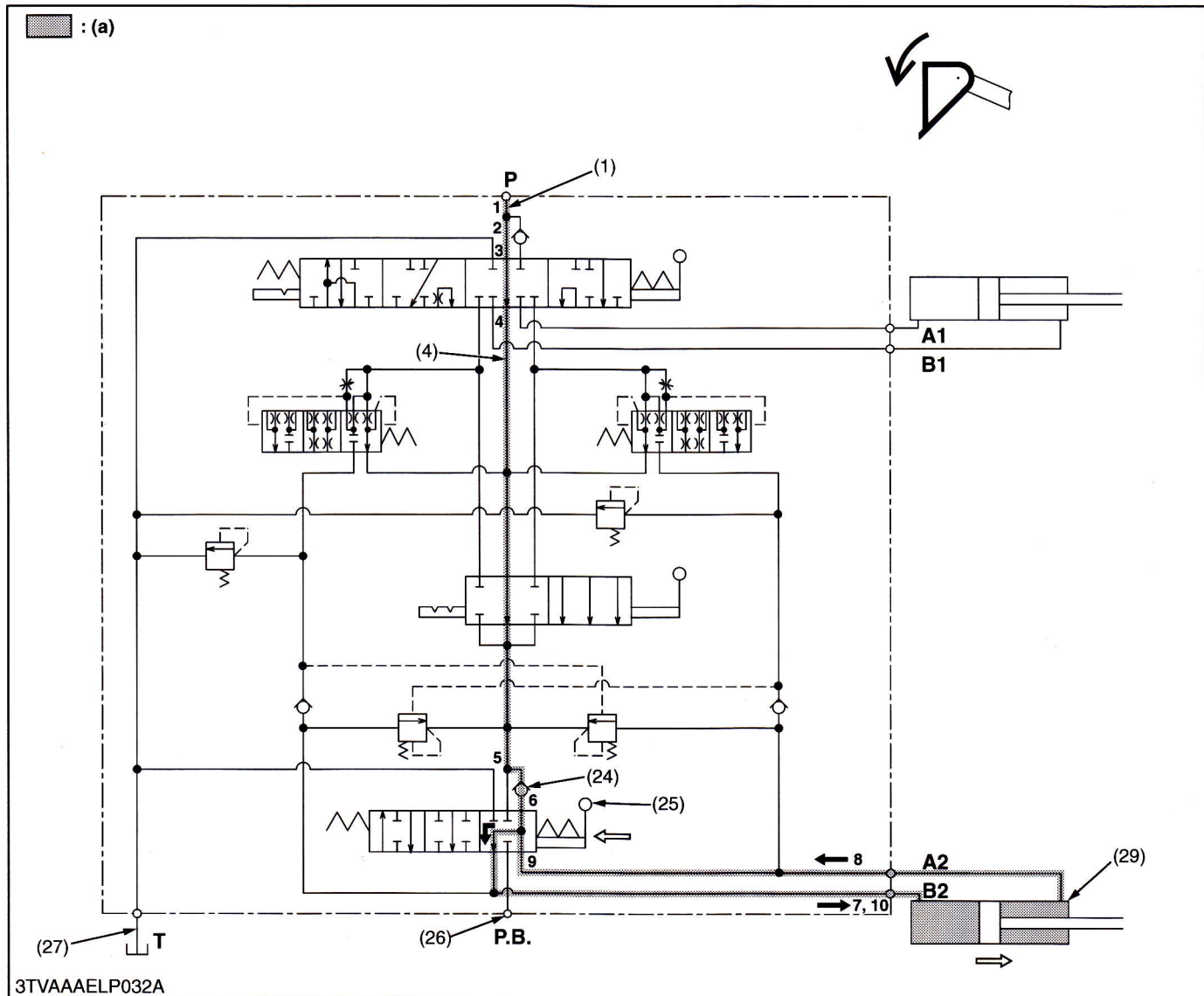


■ Bucket (Dump) (Figure 1)



- (1) **P** Port (25) Bucket Spool (27) **T** Port
(4) Center BY-pass Passage (26) **P.B.** Port (29) Bucket Cylinder
(24) Load Check Valve

1 to 7 :Oil Flow
8 to 10 :Oil Flow
(a) Low Pressure

The following explanations explain illustration **figure 1, 2, 3 and 4.**

When the bucket spool (25) is pushed in, the hydraulic oil from **P** port (1) passes through the center by-pass passage (4) (Refer to the **b-b.**) via the load check valve (24) and is discharged into the opened **A2** and **B2** ports. As a result, the oil is supplied to the rod side and the bottom side of the bucket cylinder, and acts in the extending direction according to the cylinder area ratio.

As the bucket cylinder extends, the oil in the rod side flows into the valve through **A2** port, and joins the oil from **P** port (1) and is led to the bottom side again (Refer to the **c-c**).

During this operation, the oil is not discharged through **P.B.** port (26) and **T** port (27).

When the bucket cylinder extends and reaches the stroke end during operation of the dump, the tractor main relief valve operates and retains the pressure of **P** port (1) at the set pressure by discharging hydraulic oil from the pump into the tank.