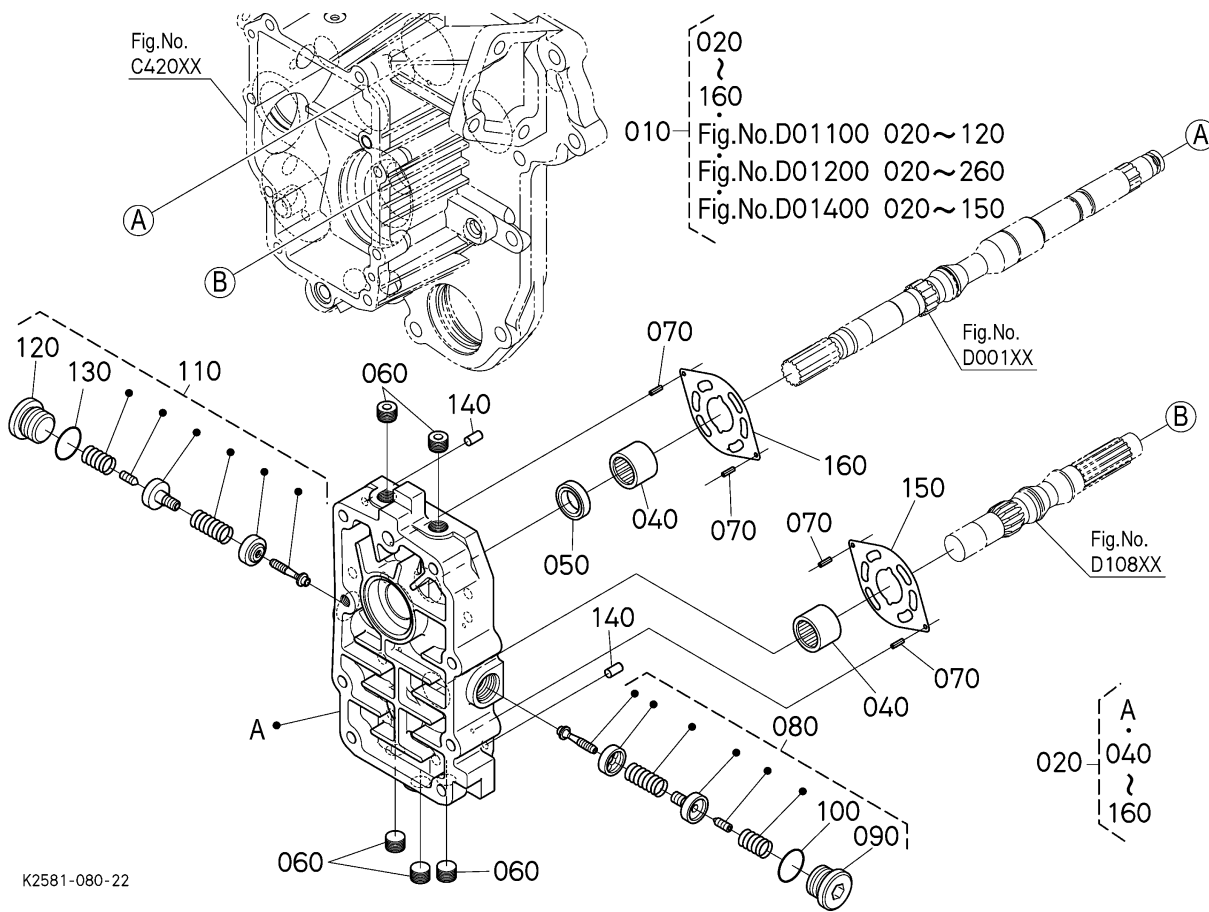


BX25 -> TRANSMISSION -> D01300 HST 3 (PORT BLOCK COVER) ## BX25

Update Date: 05/06/2016, Printing Date: 02/22/2017



BX25 -> TRANSMISSION -> D01300 HST 3 (PORT BLOCK COVER) ## BX25

Update Date: 05/06/2016, Printing Date: 02/22/2017

Interchangeable =, Not Interchangeable NI, New for Old >>, Old for New <<

No	Part Number	Part Name	Qty	RoundUp	IC	S/N	Remarks	Kg
010	K2651-14004	ASSY,HST	1					0.0
020	K2651-14702	ASSY COVER,PORT BLO.	1			<=62844		11.484
020	K2651-14703	COVER,ASSY PORT BLOC	1		>>	>=62845		11.484
040	6A610-35320	BEARING,NEEDLE	2					0.055
050	32721-35380	SEAL,OIL	1					0.0044
060	K7001-39620	PLUG	5					0.0132
070	05411-00310	PIN,SPRING	4					0.0022
080	K2581-14720	ASSY VALVE,RELIEF F	1					0.088
090	5H600-11820	PLUG(GPF1/2)	1					0.088

BX25 -> TRANSMISSION -> D01300 HST 3 (PORT BLOCK COVER) ## BX25

Update Date: 05/06/2016, Printing Date: 02/22/2017

Interchangeable =, Not Interchangeable NI, New for Old >>, Old for New <<

No	Part Number	Part Name	Qty	RoundUp	IC	S/N	Remarks	Kg
100	04817-00180	O RING	1					0.0022
110	K2581-14730	ASSY VALVE,RELIEF R	1					0.088
120	5H600-11820	PLUG(GPF1/2)	1					0.088
130	04817-00180	O RING	1					0.0022
140	K7561-14090	PIN,STRAIGHT 6X11.8	2					0.0066
150	K2581-14840	PLATE,VALVE M	1			<=62844		0.066
150	K2581-14842	PLATE,VALVE M	1		>>	>=62845		0.066
160	K2651-14840	PLATE,VALVE M	1			<=62844		0.0748
160	K2651-14842	PLATE,VALVE M	1		>>	>=62845		0.0748