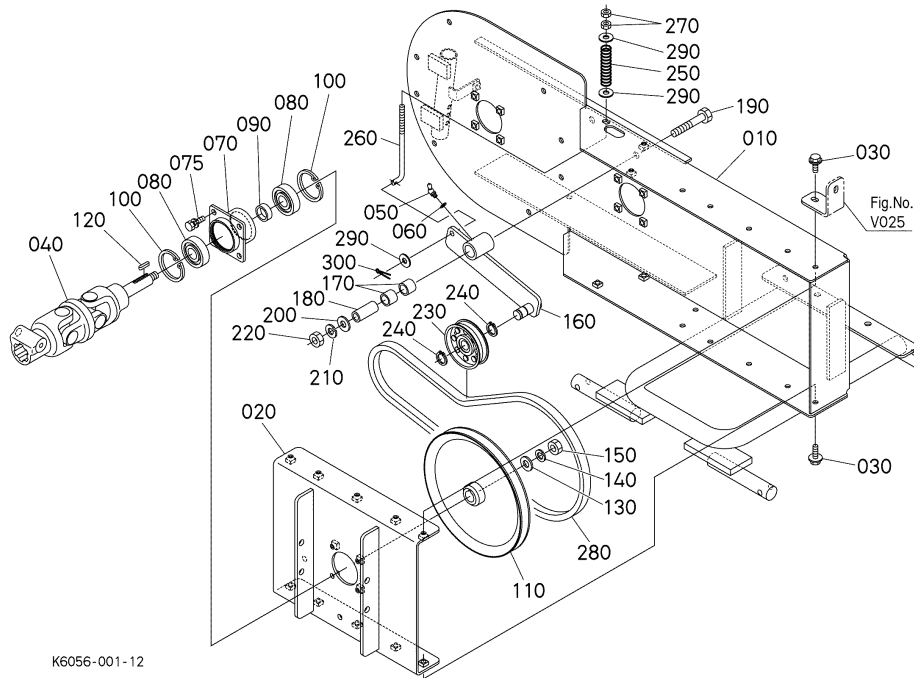


V00200 DRIVE PULLEY ## GCK60-23BX
GCK60-23BX GRASS CATCHER

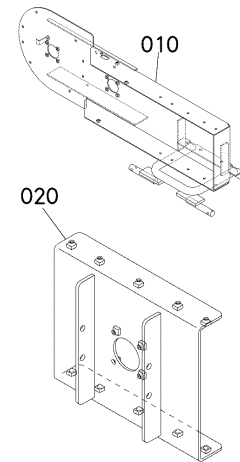
Update Date: 2021/01/29

Printing Date: 2023/04/23



K6056-001-12

OLD PARTS



K6056-800-11

= Interchangeable

NI Not Interchangeable

>> New for Old

<< Old for New

No.	Part No.	Part Name	Qty	IC	Serial No./PIN	Remarks	.lbs
010	K6056-55135	FRAME,BLOWER	1		<=10673		0.0
010	K6056-55136	FRAME,BLOWER	1	>>	>=10674		0.0
010	K6056-55137	FRAME,BLOWER	1	>>	>=10738		0.0
020	K6056-55180	STAY,INPUT	1		<=11285		0.0
020	K6056-55182	STAY,INPUT	1	>>	>=11286		0.0
020	K6058-55180	STAY,INPUT	1	=			0.0
030	01754-50820	BOLT,FLANGE	10				0.033
040	K6056-32030	JOINT,UNIVERSAL	1				6.82
050	K5763-44250	NIPPLE,GREASE(45')	1		<=13358		0.022
050	K5763-44252	NIPPLE(GREASE,45')	1	>>	>=13359		0.022
060	K5763-27340	SHIM,ADJUST	1				0.0022
070	K6045-40102	HOLDER,PULLEY	1		<=12139		0.0
070	K6045-40103	HOLDER,PULLEY	1	>>	>=12140		0.0
070	K6045-40104	HOLDER(PULLEY)	1	>>	>=13359		0.0
075	01123-50825	BOLT	4				0.0286
080	08141-06304	BEARING,BALL	2				0.3124

V00200 DRIVE PULLEY ## GCK60-23BX
GCK60-23BX GRASS CATCHER

Update Date: 2021/01/29

Printing Date: 2023/04/23

≡ Interchangeable

NI Not Interchangeable

>> New for Old

<< Old for New

No.	Part No.	Part Name	Qty	IC	Serial No./PIN	Remarks	.lbs
090	K6045-40150	COLLAR,FAN	1				0.0
100	04611-00520	CIR-CLIP,INTERNAL	2				0.0198
110	K6056-40900	PULLEY	1		<=14345		0.0
110	K6056-40902	PULLEY(9.0)	1	>>	>=14346		0.0
120	05712-00522	KEY,FEATHER	1				0.0088
130	04013-50120	WASHER,PLAIN	1				0.0154
140	04512-50120	WASHER,SPRING LOCK	1				0.0066
150	02174-50120	NUT	1				0.022
160	K6056-40552	ARM,TENSION DR	1		<=14371		0.0
160	K6056-40553	ARM,TENSION DR	1	>>	>=14372		0.0
170	K5651-20150	BUSHING,TENSION #12KU10	2		<=14234		0.0374
170	K5651-20152	BUSHING(TENSION #12DP10)	2	>>	>=14235		0.0374
180	K5651-34780	COLLAR(TENSION)	1				0.121
190	01173-51270	BOLT	1				0.1474
200	04013-50120	WASHER,PLAIN	1				0.0154
210	04512-50120	WASHER,SPRING LOCK	1				0.0066
220	02174-50120	NUT	1				0.022
230	K6045-40350	PULLEY,TENSION 3.0	1		<=13670		0.0
230	K6045-40352	PULLEY(TENSION 3.0)	1	>>	>=13671		0.0
240	04612-00170	CIR-CLIP,EXTERNAL	2				0.0022
250	K3151-43250	SPRING,BRAKE	1		<=14164		0.11
250	K3151-43253	SPRING(BRAKE)	1	>>	>=14165		0.11
260	K6056-40570	ROD,THREAD	1				0.0
270	02112-50080	NUT	2				0.0066
280	K6056-35050	BELT	2				0.0
290	04013-50080	WASHER,PLAIN	3				0.0066
300	75599-53183	PIN,COTTER(9/64*1)	1				0.0066