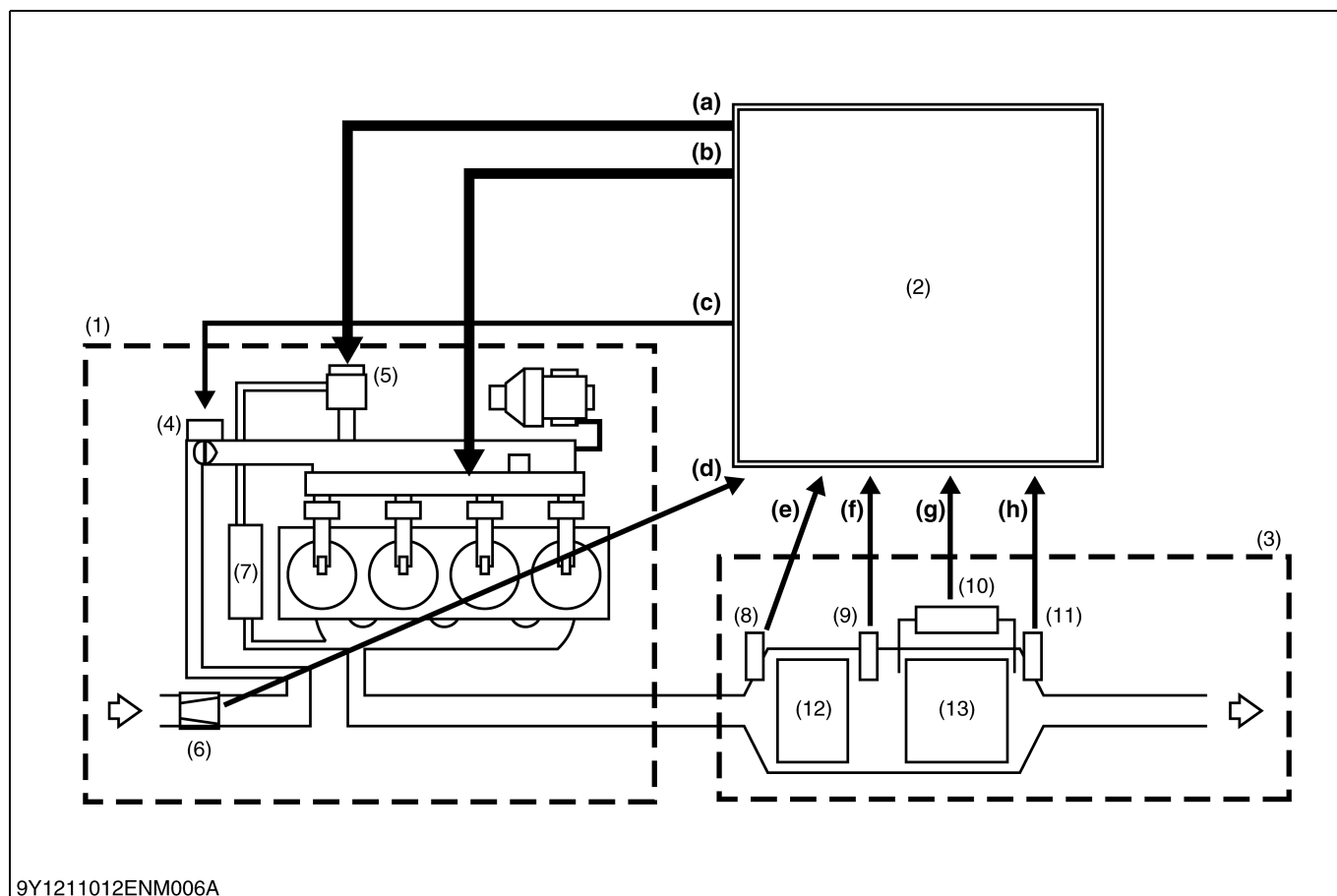


7. AFTER TREATMENT SYSTEM

[1] AFTER TREATMENT DEVICES



- (1) Common Rail System
- (2) Engine ECU
- (3) After Treatment Devices
- (4) Intake Throttle Valve
- (5) EGR Valve
- (6) Air Flow Sensor
- (7) EGR Cooler

- (8) Temperature Sensor (DOC Inlet Exhaust Temperature) (T_0)
- (9) Temperature Sensor (DPF Inlet Exhaust Temperature) (T_1)
- (10) Differential Pressure Sensor (DPF Differential Pressure) (ΔP)

- (11) Temperature Sensor (DPF Outlet Exhaust Temperature) (T_2)
- (12) Diesel Oxidation Catalyst (DOC)
- (13) Diesel Particulate Filter (DPF)

- (a) EGR Valve Opening
- (b) Injection Pattern
- (c) Inlet Throttle Valve Angle
- (d) Air Flow Sensor Signal
- (e) T_0 (DOC Inlet Exhaust Temperature)
- (f) T_1 (DPF Inlet Exhaust Temperature)
- (g) ΔP (DPF Differential Pressure)
- (h) T_2 (DPF Outlet Exhaust Temperature)

9Y1211012ENM0038US0