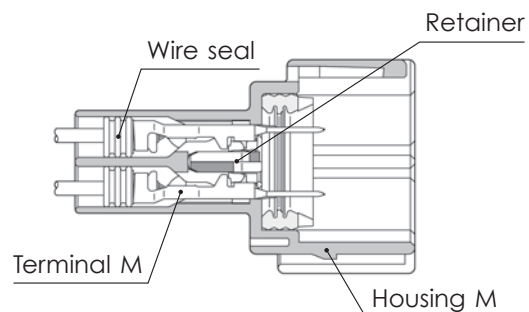
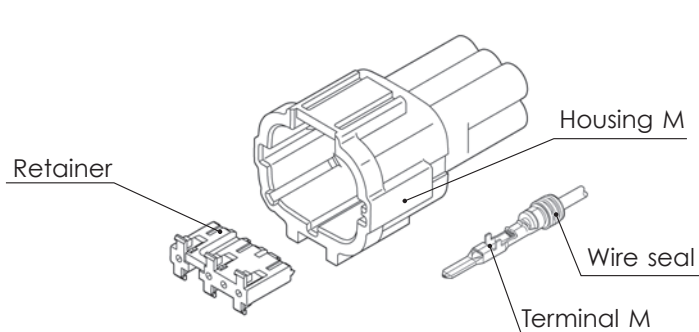


RS SERIES for STANDARD Type1

2.3mm (090)

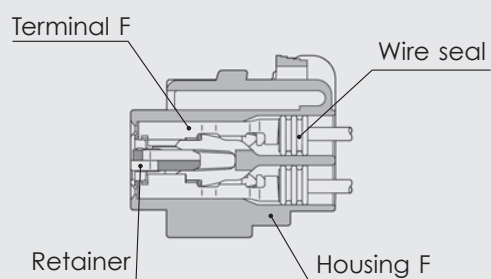
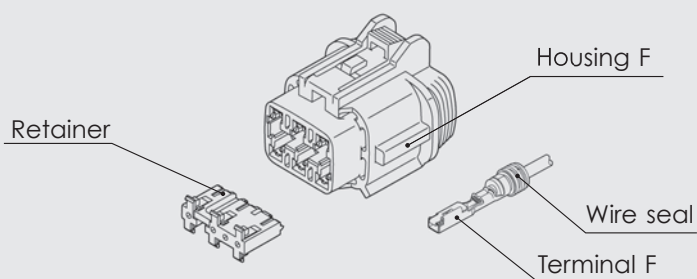
Structure / 構造

G-02



Connector M

Connector F

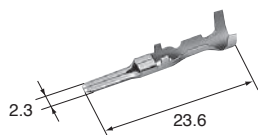
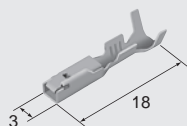


2.3mm (090)

Terminal (UNIT : mm)

(S)

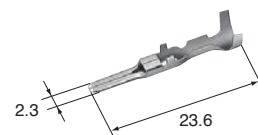
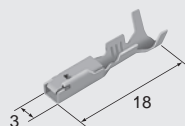
Cable size (mm ²) 適用電線サイズ	0.3~0.5
Material 材質	Brass 黄銅
Surface treatment 表面処理	Tin-plated Snメッキ

**M (8100-3803)****F (8240-0263)**

Cable size (mm ²) 適用電線サイズ	0.3~0.5
Material 材質	Heat-resistant copper alloy
Surface treatment 表面処理	Tin-plated Snメッキ

(S)**Au**

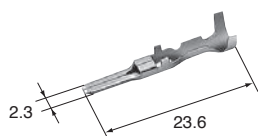
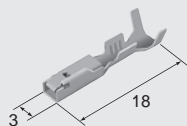
Cable size (mm ²) 適用電線サイズ	0.3~0.5
Material 材質	Brass 黄銅
Surface treatment 表面処理	Gold-plated Auメッキ

**M (8100-3805)****F (8240-0266)**

Cable size (mm ²) 適用電線サイズ	0.3~0.5
Material 材質	Heat-resistant copper alloy
Surface treatment 表面処理	Gold-plated Auメッキ

(M)

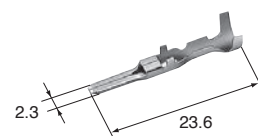
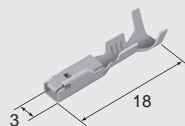
Cable size (mm ²) 適用電線サイズ	0.85~1.25
Material 材質	Brass 黄銅
Surface treatment 表面処理	Tin-plated Snメッキ

**M (8100-3804)****F (8240-0264)**

Cable size (mm ²) 適用電線サイズ	0.85~1.25
Material 材質	Heat-resistant copper alloy
Surface treatment 表面処理	Tin-plated Snメッキ

(M)**Au**

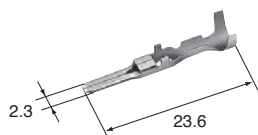
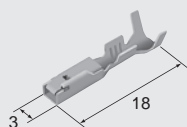
Cable size (mm ²) 適用電線サイズ	0.85~1.25
Material 材質	Brass 黄銅
Surface treatment 表面処理	Gold-plated Auメッキ

**M (8100-3806)****F (8240-0267)**

Cable size (mm ²) 適用電線サイズ	0.85~1.25
Material 材質	Heat-resistant copper alloy
Surface treatment 表面処理	Gold-plated Auメッキ

(L)

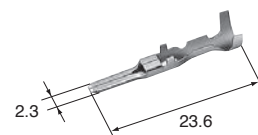
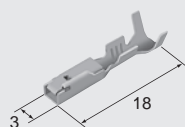
Cable size (mm ²) 適用電線サイズ	2.0
Material 材質	Brass 黄銅
Surface treatment 表面処理	Tin-plated Snメッキ

**M (8100-4172)****F (8240-0265)**

Cable size (mm ²) 適用電線サイズ	2.0
Material 材質	Heat-resistant copper alloy
Surface treatment 表面処理	Tin-plated Snメッキ

(L)**Au**

Cable size (mm ²) 適用電線サイズ	2.0
Material 材質	Brass 黄銅
Surface treatment 表面処理	Gold-plated Auメッキ

**M (8100-4173)****F (8240-0268)**

Cable size (mm ²) 適用電線サイズ	2.0
Material 材質	Heat-resistant copper alloy
Surface treatment 表面処理	Gold-plated Auメッキ

G-03

RS SERIES

2.3mm (090)

Wire seals (UNIT : mm)

The wire seals are common to M and F.
ワイヤシールはM、F 共用です。

(M)

(7165-0472)

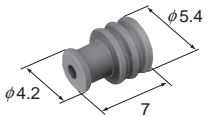
Cable size (mm ²) 適用電線サイズ	(AVSS/1.25)
Cable overall diameter (mm) 電線仕上り外径	2.0~2.4
Material 材質	Silicon シリコン
Color 色相	Violet 紫



(US)

(7165-0474)

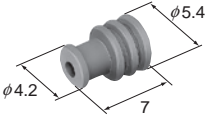
Cable size (mm ²) 適用電線サイズ	(AVSS/0.3) (CAVUS/0.3~0.5)
Cable overall diameter (mm) 電線仕上り外径	1.0~1.4
Material 材質	Silicon シリコン
Color 色相	Orange 橙



(S)

(7165-0473)

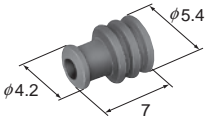
Cable size (mm ²) 適用電線サイズ	(AVSS/0.5~0.85) (CAVUS/0.85~1.25)
Cable overall diameter (mm) 電線仕上り外径	1.5~1.9
Material 材質	Silicon シリコン
Color 色相	Light Blue 淡青



(L)

(7165-0471)

Cable size (mm ²) 適用電線サイズ	(AVSS/2.0)
Cable overall diameter (mm) 電線仕上り外径	2.5~2.9
Material 材質	Silicon シリコン
Color 色相	Light Green 淡緑



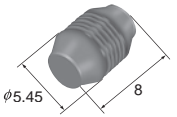
2.3mm (090)

Dummy plugs (UNIT : mm)

- Dummy plugs are common to M and F.
- Dummy plugs are used to blind unused terminal holes.
- ダミー栓はM、F 共用です。
- 不必要なターミナル穴を塞ぐために、ダミー栓を使用します。

(7165-1131)

Material 材質	Silicon シリコン
Color 色相	Blue 青



2.3mm (090)

Housing (UNIT : mm)

Ref: Terminal part No.
ターミナル参照頁 G-02

Ref: wire seal No.
ワイヤシール参照頁 G-04

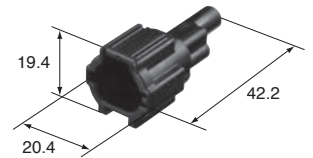
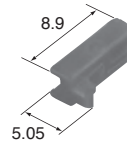
Ref: Dummy plug No.
ダミー栓参照頁 G-04

Material
材 質 PBT

※ Detail dimensions for mounting portion of the bracket are specified in the official drawing.
Please contact our sales staff.

※ 固定用ブラケットに関しては、弊社営業担当にお問い合わせください。

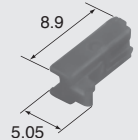
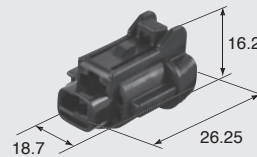
1way



Retainer No. (6918-1773)

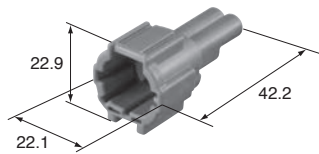
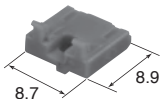
M (6188-0551) RS 01 MB

RS 01 FB **F (6185-0862)**



Retainer No. (6918-1773)

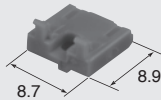
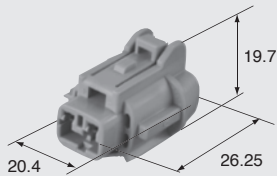
2way



Retainer No. (6918-1774)

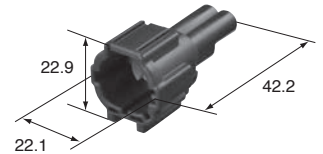
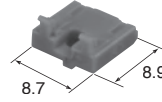
M (6188-0554) RS 02 MGY

RS 02 FGY **F (6185-0867)**



Retainer No. (6918-1774)

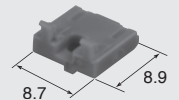
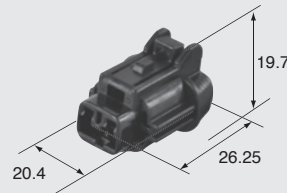
2way



Retainer No. (6918-1774)

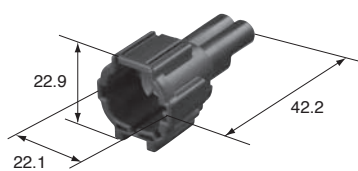
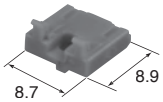
M (6188-0552) RS 02 MB

RS 02 FB **F (6185-0865)**



Retainer No. (6918-1774)

2way



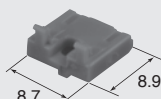
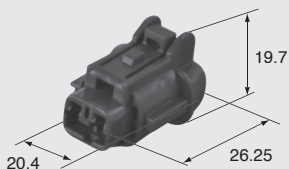
Retainer No. (6918-1774)

M (6188-0553) RS 02 MBR

M (6188-0663) RS 02 MBR-DGY

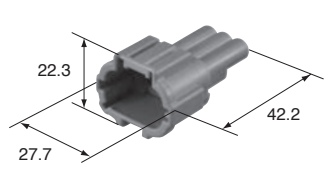
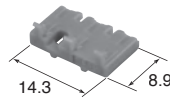
RS 02 FBR **F (6185-0866)**

RS 02 FBR-DGY **F (6185-1101)**



Retainer No. (6918-1774)

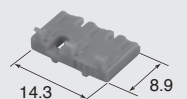
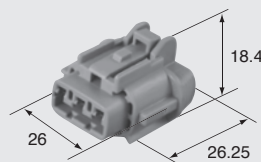
3way



Retainer No. (6918-1775)

M (6188-0556) RS 03 MGY

RS 03 FGY **F (6185-0869)**

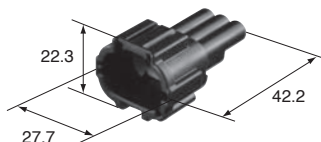
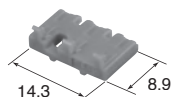


Retainer No. (6918-1775)

G-05

RS SERIES

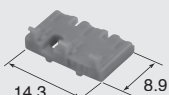
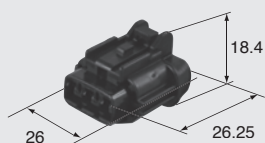
3way



Retainer No. (6918-1775)

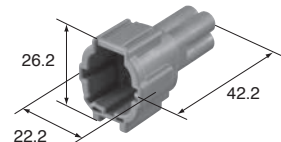
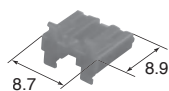
M (6188-0555) RS 03 MB

RS 03 FB **F (6185-0868)**



Retainer No. (6918-1775)

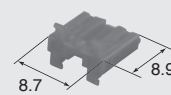
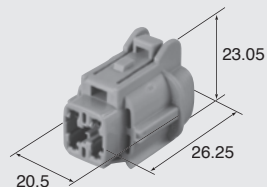
4way



Retainer No. (6918-1776)

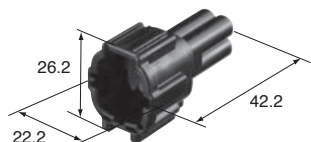
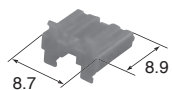
M (6188-0558) RS 04 MGY

RS 04 FGY-PR **F (6185-1171)**



Retainer No. (6918-1776)

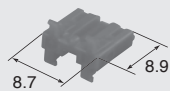
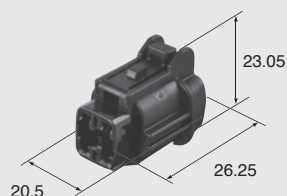
4way



Retainer No. (6918-1776)

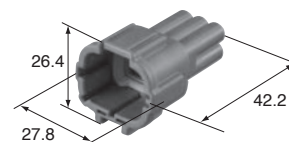
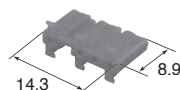
M (6188-0557) RS 04 MB

RS 04 FB-PR **F (6185-1169)**



Retainer No. (6918-1776)

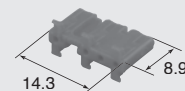
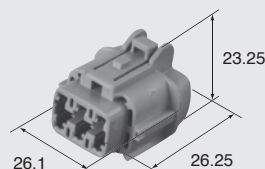
6way



Retainer No. (6918-1779)

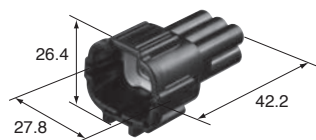
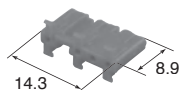
M (6188-5540) RS 06 MGY

RS 06 FGY-PR **F (6185-5177)**



Retainer No. (6918-1779)

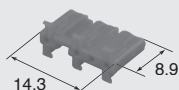
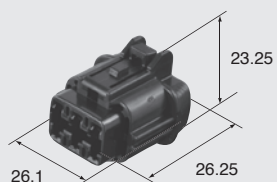
6way



Retainer No. (6918-1779)

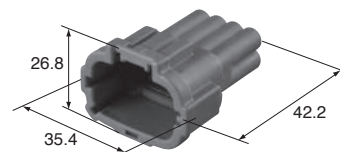
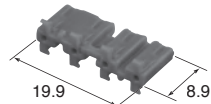
M (6188-5539) RS 06 MB

RS 06 FB-PR **F (6185-5175)**



Retainer No. (6918-1779)

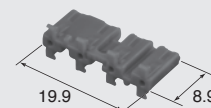
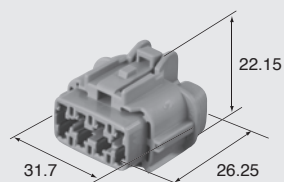
8way



Retainer No. (6918-1780)

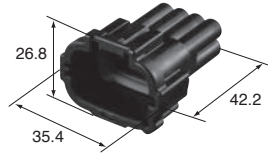
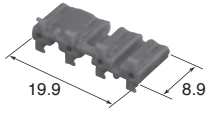
M (6188-5544) RS 08 MGY-PR

RS 08 FGY-PR **F (6185-5181)**



Retainer No. (6918-1780)

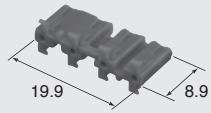
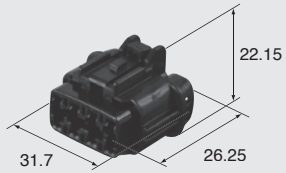
8way



Retainer No. (6918-1780)

M (6188-5542) RS 08 MB-PR

RS 08 FB-PR **F (6185-5179)**



Retainer No. (6918-1780)

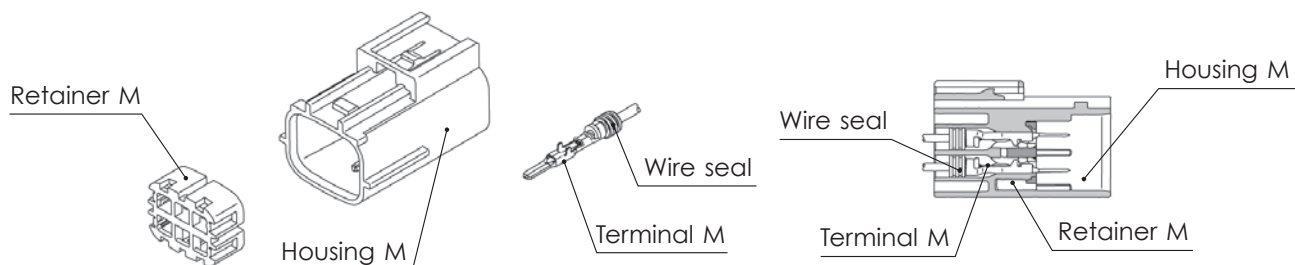
G-07

RS SERIES

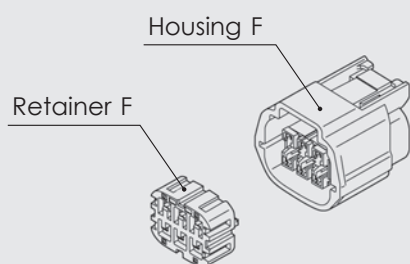
RS SERIES for STANDARD Type2

2.3mm (090)

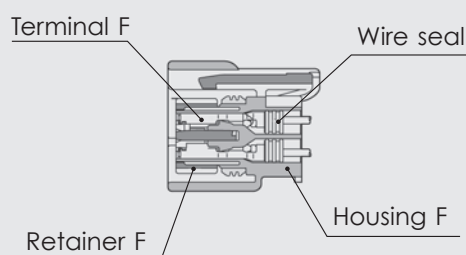
Structure / 構造



Connector M



Connector F



2.3mm (090)

Housing (UNIT : mm)

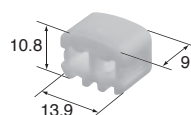
Ref: Terminal part No.
ターミナル参照頁 G-02

Ref: wire seal No.
ワイヤシール参照頁 G-04

Ref: Dummy plug No.
ダミー栓参照頁 G-04

Material
材質 PBT

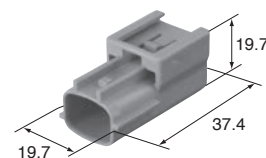
2way



Retainer No. (6918-1653)

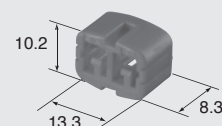
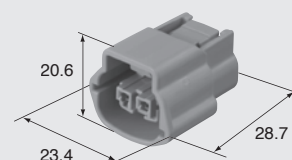
M (6181-0515) RS 02 MSB

M (6181-0670) RS 02 MSB-B



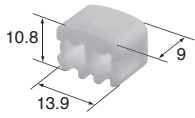
RS 02 FSB **F (6189-0951)**

RS 02 FSB-B **F (6189-1107)**



Retainer No. (6918-1651)

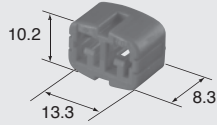
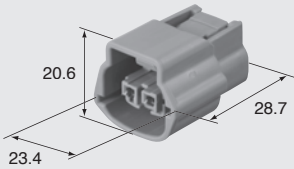
2way



Retainer No. (6918-1653)

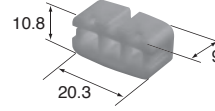
M (6181-0532) RS 02 MLGY

RS 02 FLGY **F (6189-0950)**



Retainer No. (6918-1651)

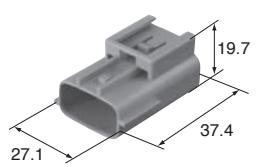
3way



Retainer No. (6918-1654)

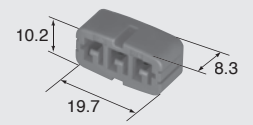
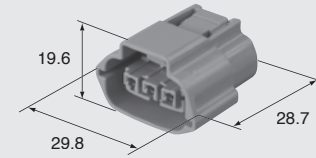
M (6181-0516) RS 03 MSB

M (6181-0671) RS 03 MSB-GY



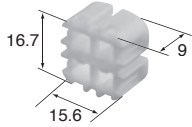
RS 03 FSB **F (6189-0928)**

RS 03 FSB-GY **F (6189-1104)**



Retainer No. (6918-1652)

4way



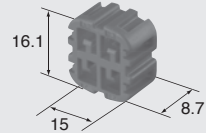
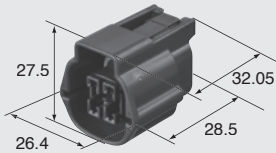
Retainer No. (6918-1598)

M (6181-0513) RS 04 MG

M (6181-0668) RS 04 MG-GY

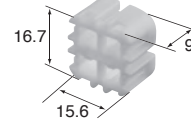
RS 04 FG **F (6189-7756)**

RS 04 FG-GY **F (6189-7757)**



Retainer No. (6918-1599)

4way



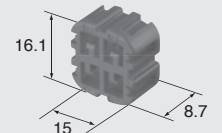
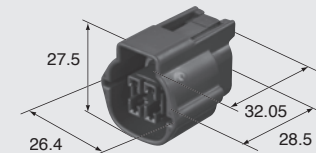
Retainer No. (6918-1598)

M (6181-0514) RS 04 ML

M (6181-0669) RS 04 ML-B

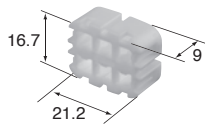
RS 04 FL **F (6189-7758)**

RS 04 FL-B **F (6189-7759)**



Retainer No. (6918-1599)

6way



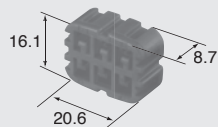
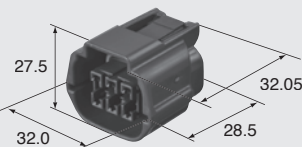
Retainer No. (6918-1600)

M (6181-0511) RS 06 MG

M (6181-0665) RS 06 MG-DGY

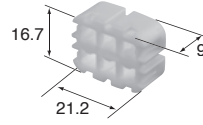
RS 06 FG **F (6189-7760)**

RS 06 FG-DGY **F (6189-7761)**



Retainer No. (6918-1601)

6way



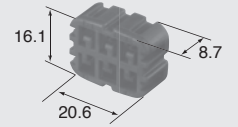
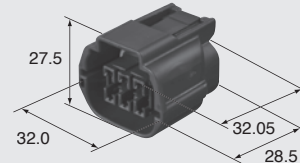
Retainer No. (6918-1600)

M (6181-0536) RS 06 ML

M (6181-0664) RS 06 ML-B

RS 06 FL **F (6189-7762)**

RS 06 FL-B **F (6189-7763)**

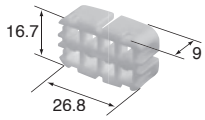


Retainer No. (6918-1601)

G-09

RS SERIES

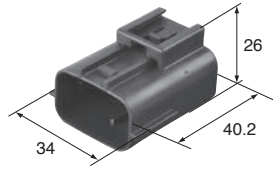
8way



Retainer No. (6918-1602)

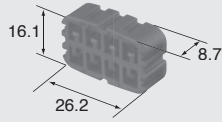
M (6181-0512) RS 08 MG

M (6181-0667) RS 08 MG-GY



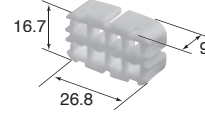
RS 08 FG **F (6189-0954)**

RS 08 FG-GY **F (6189-1108)**



Retainer No. (6918-1603)

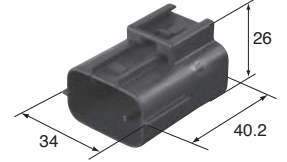
8way



Retainer No. (6918-1602)

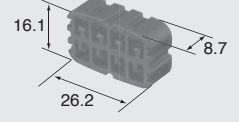
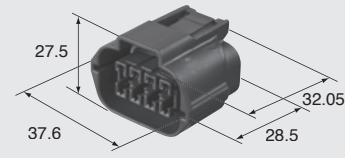
M (6181-0522) RS 08 ML

M (6181-0666) RS 08 ML-B



RS 08 FL **F (6189-0955)**

RS 08 FL-B **F (6189-1109)**

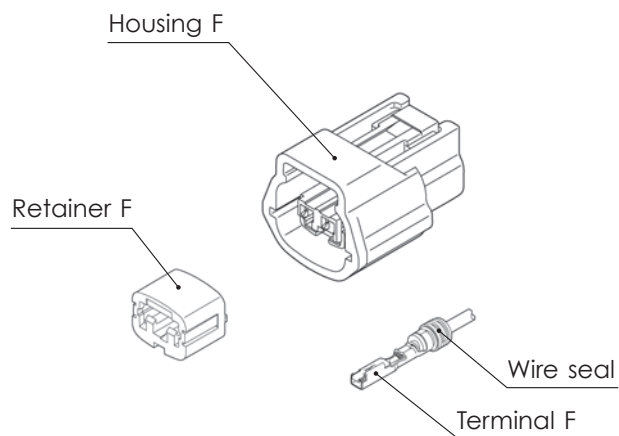


Retainer No. (6918-1603)

RS SERIES for E-RS

2.3mm (090)

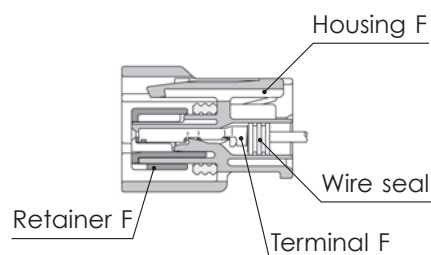
Structure / 構造



Mating portion
(Connector M)



Connector F
(After setting retainer)



G-11

RS SERIES

2.3mm (090)

Housing (UNIT : mm)

Ref: Terminal part No.
ターミナル参照頁 G-02

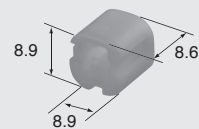
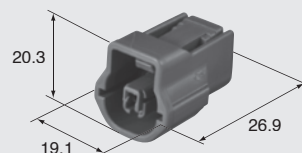
Ref: wire seal No.
ワイヤシール参照頁 G-04

Ref: Dummy plug No.
ダミー栓参照頁 G-04

Material
材質 PBT

1way

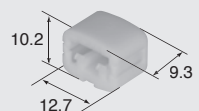
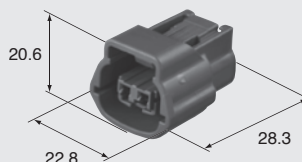
E 01 FGY-RS **F (6098-2329)**



Retainer No. (6918-1636)

2way

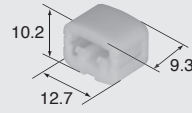
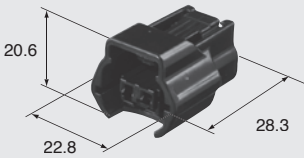
E 02 FGY-RS **F (6189-0772)**



Retainer No. (6918-1594)

2way


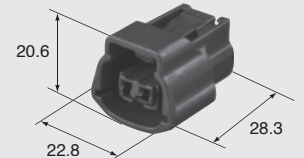
E 02 FB-RS **F (6189-0773)**



Retainer No. (6918-1594)

2way


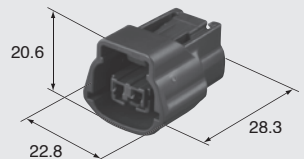
E 02 FBR-RS **F (6189-0774)**
E 02 FBR-RS-GY **F (6189-1093)**



Retainer No. (6918-1594)

2way


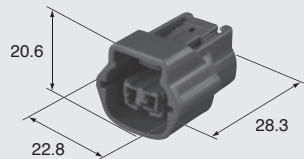
E 02 FG-RS **F (6189-0775)**
E 02 FG-RS-LGY **F (6189-1094)**



Retainer No. (6918-1594)

2way

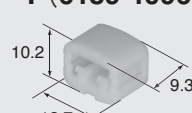
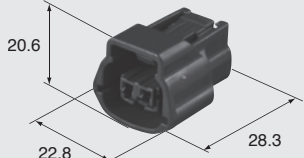
E 02 FR-RS **F (6189-0776)**
E 02 FR-RS-GY **F (6189-1095)**



Retainer No. (6918-1594)

2way


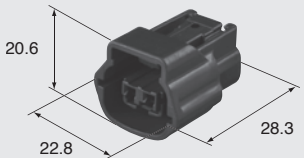
E 02 FL-RS **F (6189-0777)**
E 02 FL-RS-LGY **F (6189-1096)**



Retainer No. (6918-1594)

2way

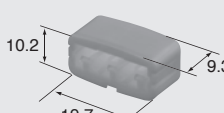
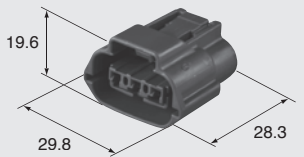
E 02 FPU-RS **F (6189-0778)**
E 02 FPU-RS-B **F (6189-1097)**



Retainer No. (6918-1594)

3way


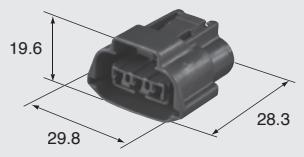
E 03 FGY-RS **F (6189-7471)**



Retainer No. (6918-1595)

3way

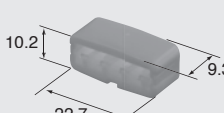
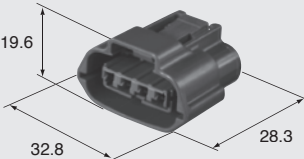
E 03 FBR-RS **F (6189-7710)**
E 03 FBR-RS-B **F (6189-7711)**



Retainer No. (6918-1595)

4way


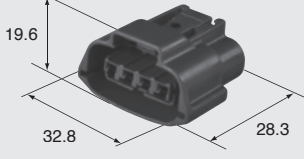
E 04 FGY-RS **F (6189-7469)**



Retainer No. (6918-1596)

4way


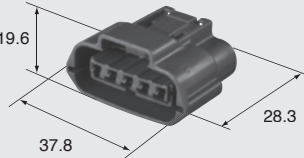
E 04 FBR-RS **F (6189-7713)**
E 04 FBR-RS-LGY **F (6189-7714)**



Retainer No. (6918-1596)

5way


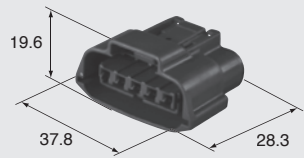
E 05 FGY-RS **F (6189-7470)**



Retainer No. (6918-1604)

5way

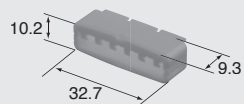
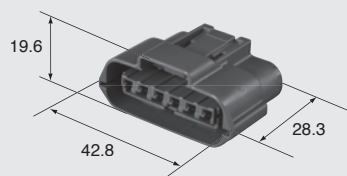
E 05 FBR-RS **F (6189-7716)**
E 05 FBR-RS-B **F (6189-7717)**



Retainer No. (6918-1604)

6way

E 06 FGY-RS **F (6189-7393)**



Retainer No. (6918-1597)

G-13

RS SERIES

TL SEALED SERIES



Features

The TL sealed connector series has a mechanism that detects terminal incomplete insertion by using a dedicated jig.

This series consists of 2.3mm type supporting use in a variety of control circuits and low power circuits.

- To restrain from incomplete engagement, this series is adopted a lock mechanism with effective clear sound.
- These male connectors can be directly secured to a bracket on the car body.
(Note: Please contact our sales staff, if you have any questions regarding the dedicated jig.)
- RoHS/ELV Compliant

特 長

TL 防水シリーズは、専用治具にて端子半挿入を検出する構造を採用しております。

ターミナルサイズは2.3mm型で構成されており、各種の制御回路並びに低パワー回路に対応することができます。

- コネクタ半嵌合抑制として、ロック音を向上させたロック構造を採用しております。
- オスコネクタは、ボデー側のブラケットに直接固定することができます。

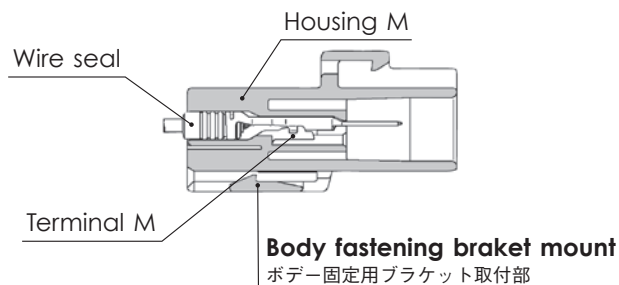
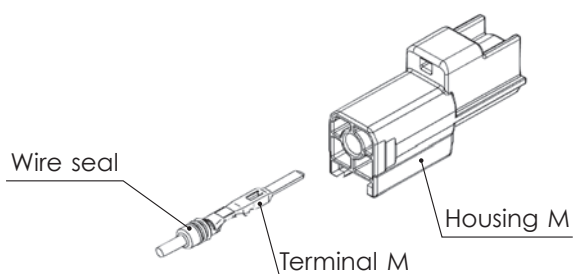
注意：専用の導通治具に関しては弊社営業担当にご確認下さい。

- RoHS / ELV 対応

TL SEALED SERIES for STANDARD

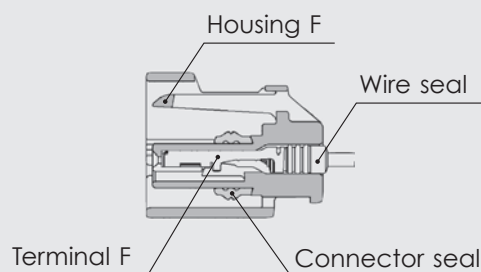
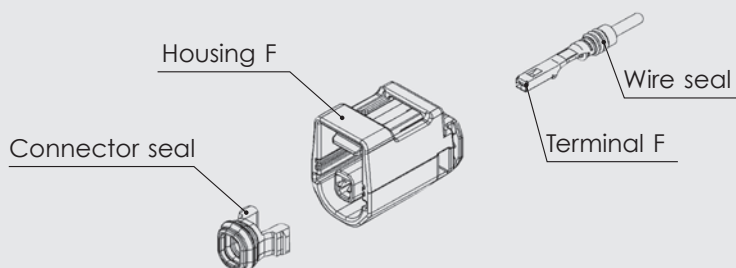
2.3mm (090)

Structure / 構造



Connector M

Connector F



2.3mm (090)

Terminal (UNIT : mm)

Ref; 2.3mm Terminal detail
2.3mmターミナル参照頁

S	M (8230-4472)	L-02	F (8100-1427)	L-02
M	M (8230-4562)	L-02	F (8100-1429)	L-02
L	M (8230-4552)	L-02	F (8100-1428)	L-02

2.3mm (090)

Wire seals (UNIT : mm)

Ref; 2.3mm Wire Seals detail
2.3mmワイヤシール掲載頁

S (7165-0516)	J-06
M (7165-0515)	J-06
L (7165-0514)	J-06

2.3mm (090)

Dummy plugs (UNIT : mm)

Ref: 2.3mm Dummy plug detail

2.3mmダミー栓掲載頁

(7165-0193) J-07

- Dummy plugs are common to M and F.
- Dummy plugs are used to blind unused terminal holes.
- ダミー栓はM、F 共用です。
- 不必要なターミナル穴を塞ぐために、ダミー栓を使用します。

2.3mm (090)

Housing (UNIT : mm)

Ref: Terminal part No.

ターミナル参照頁

L-02

Ref: wire seal No.

ワイヤシール参照頁

J-06

Ref: Dummy plug No.

ダミー栓参照頁

J-07

Material

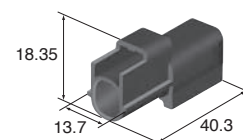
材質

PBT

1way

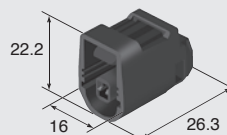
Color
色 相

Black
黒



M (6181-6658)

F (6189-7214)

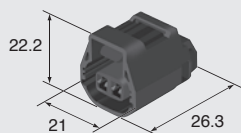


Color
色 相

Black
黒

2way

F (6189-7189)

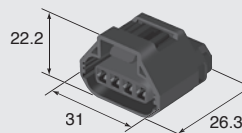


Color
色 相

Black
黒

4way

F (6189-7188)

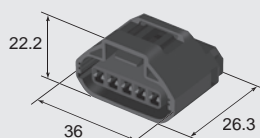


Color
色 相

Black
黒

5way

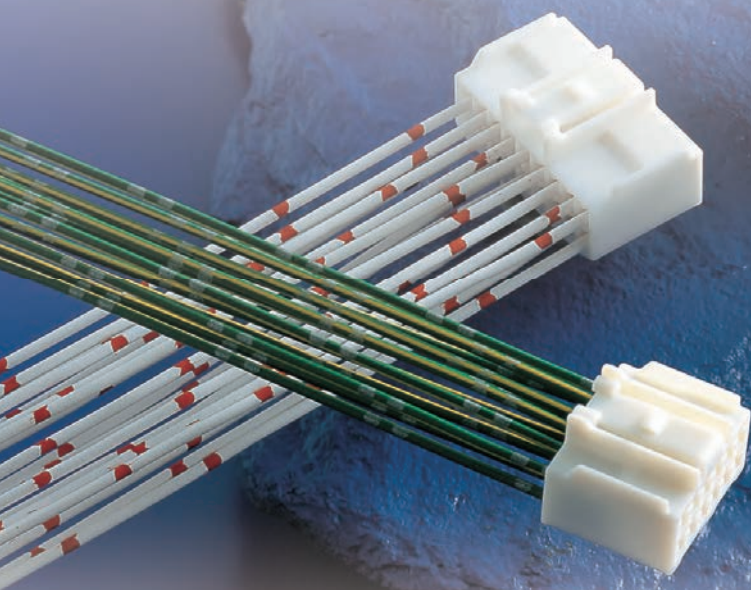
F (6189-7190)



Color
色 相

Black
黒

SL SERIES



Features

The SL connector series is adopted a mechanism that detects terminal incomplete insertion by using a dedicated jig.

This series consists of 1.5mm, 2.3mm and 2.8mm types classified according to the terminal size, covering an extensive array of applications from signal circuits to low power circuits.

- These connectors can be directly secured to a bracket on the car body. In addition, an extra clip can be attached to the connector to secure it to the car body.
(Note: Please contact our sales staff, if you have any questions regarding the dedicated jig.)
- RoHS/ELV Compliant

特 長

SL シリーズコネクタは、専用治具にて端子半挿入を検出する構造を採用しております。

ターミナルサイズにより1.5mm・2.3mm・2.8mm型で構成されており、信号回路からパワー回路まで幅広くご利用いただけます。

- コネクタは、ボデー側のブラケットに直接固定することができます。
またコネクタにはボデーに固定するためのクランプ（クリップ）を装着することができます。
注意：専用の導通治具に関しては弊社営業担当にご確認下さい。
- RoHS／ELV 対応