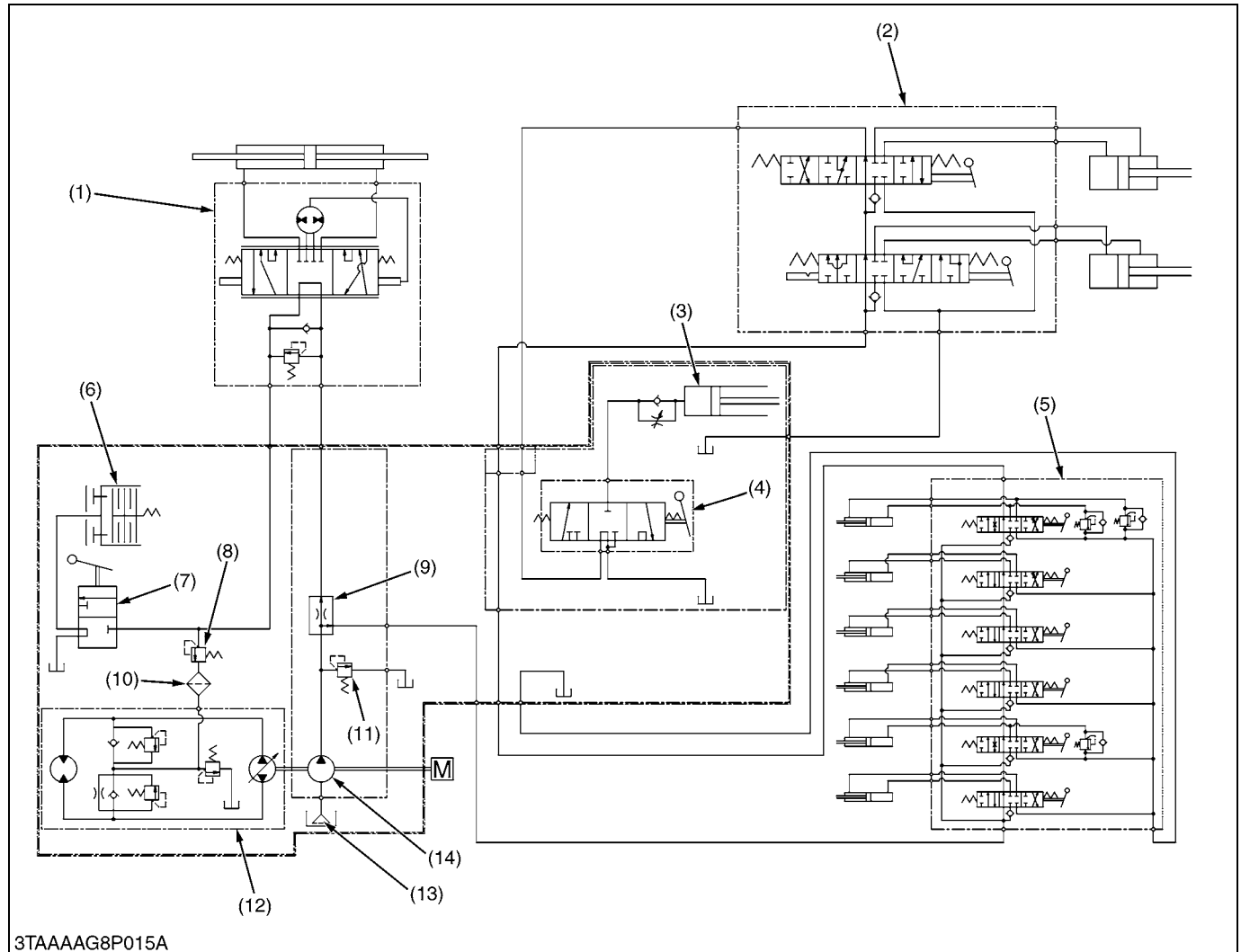


# 1. HYDRAULIC CIRCUIT



- |                                |                             |                         |                             |
|--------------------------------|-----------------------------|-------------------------|-----------------------------|
| (1) Power Steering Controller  | (5) Backhoe Control Valve   | (9) Flow Priority Valve | (12) Hydraulic Transmission |
| (2) Front Loader Control Valve | (6) PTO Clutch              | (10) Oil Filter         | (13) Oil Strainer           |
| (3) Hydraulic Cylinder         | (7) PTO Clutch Valve        | (11) Relief Valve       | (14) Hydraulic Pump         |
| (4) Control Valve              | (8) PTO Clutch Relief Valve |                         |                             |

The hydraulic system of this tractor is composed of a hydraulic pump, control valve, hydraulic cylinder and other components.

This system has the following functions.

1. Oil is supplied by hydraulic pump which is driven by pump drive shaft in the transmission case. As the pump drive shaft is connected to the propeller shaft, hydraulic pump starts running when engine is started.
2. The hydraulic pump supplies the high pressured oil to control valve for 3 point hitch system, power steering controller, PTO clutch valve and hydrostatic transmission after dividing oil flow by flow priority valve.
3. Hydraulic power take off from the hydraulic block type outlet to operate the implements such as a front loader and so on.