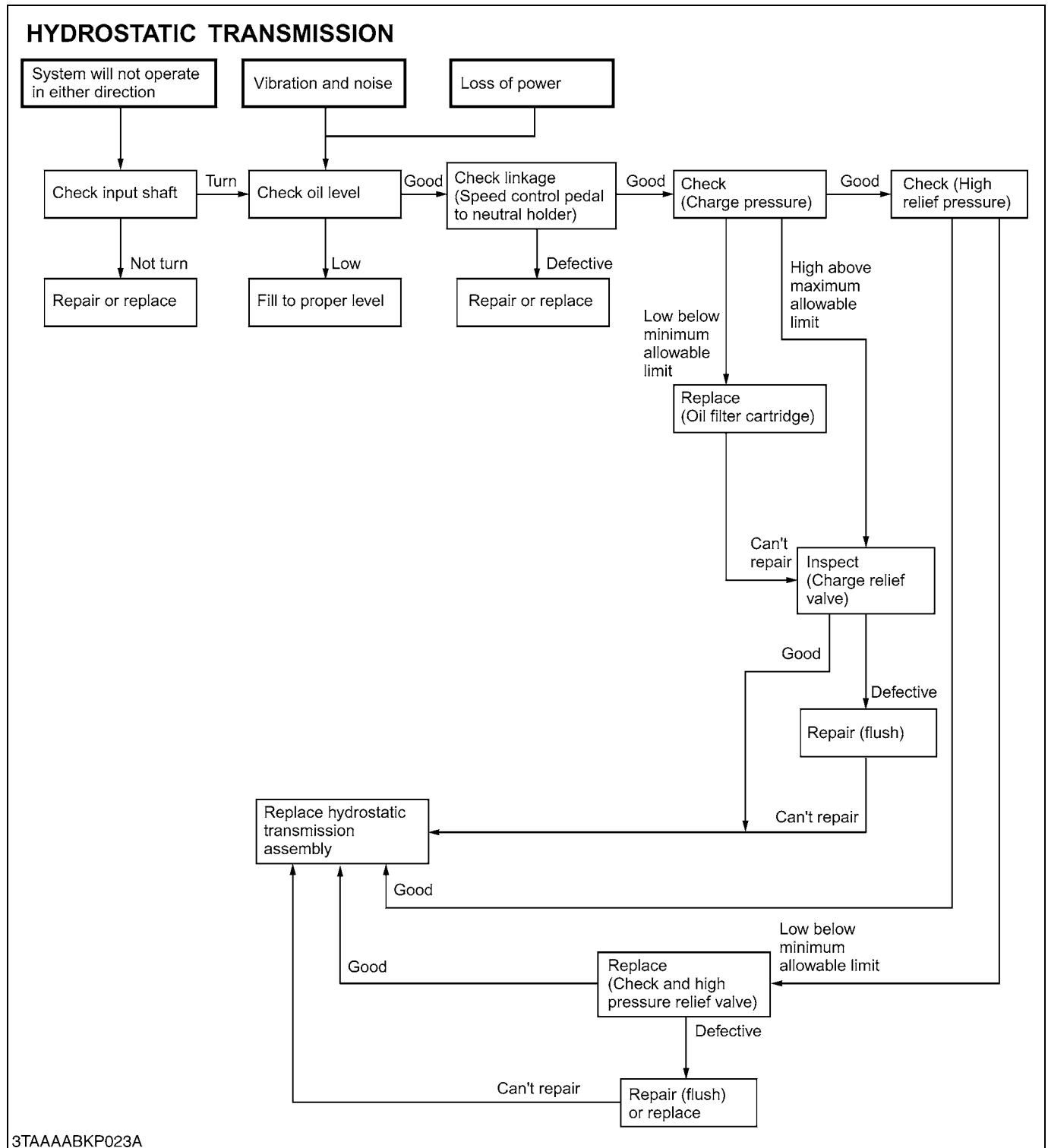
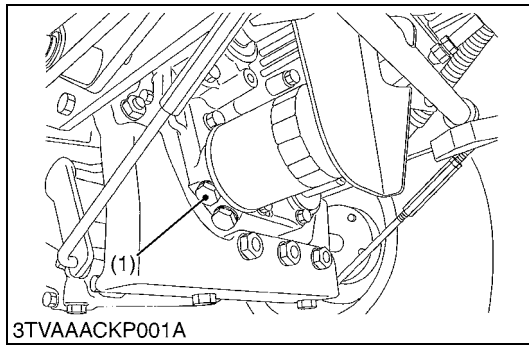


1. TROUBLESHOOTING





Charge Relief Pressure

⚠ CAUTION

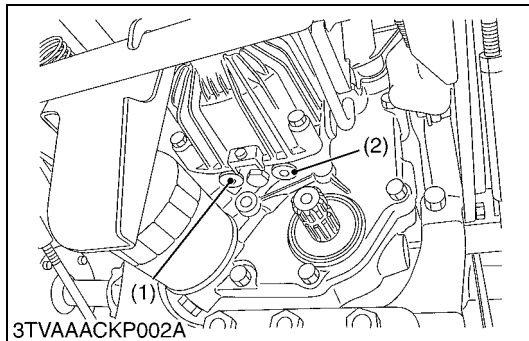
- When checking, park the tractor on flat ground, apply the parking brake.
1. Remove the plug (M14, Pitch 1.5 mm) (1) from the front cover, then install the adaptor, cable and pressure gauge.
 2. Set the range gear shift lever to **Neutral** position.
 3. Start the engine and run it at the maximum speed.
 4. Read the pressure gauge to measure the charge relief pressure.
 5. If the measurement is not within the factory specifications, check the charge relief valve and related hydraulic components.

| | | |
|------------------------|--|--|
| Charge relief pressure | Factory spec. (Oil temperature at 50 °C, 122 °F) | 294.2 to 490.4 kPa 3.0 to 5.0 kgf/cm ² 42.7 to 71.1 psi |
|------------------------|--|--|

| | | |
|-------------------|------|---|
| Tightening torque | Plug | 21.58 to 25.50 N·m 2.2 to 2.6 kgf·m 15.91 to 18.81 ft-lbs |
|-------------------|------|---|

(1) Plug

W1013009



High Relief Pressure

⚠ CAUTION

- When checking, park the tractor on flat ground, apply the parking brake.
1. Remove the hexagon socket head plug (3/4-16 UNF-2A) from **P1** (1) or **P2** (2), then install the adaptor, cable and pressure gauge.
 2. Start the engine and run it at maximum speed.
 3. Set the range gear shift lever to **High** position.
 4. Depress the speed control pedal to **forward** or **reverse**, and read the pressure gauge to measure the high relief pressure.
 5. If the measurement is not same as factory specification, check the high pressure relief valve and related hydraulic components.

| | | |
|----------------------|--|--|
| High relief pressure | Factory spec. (Oil temperature at 50 °C, 122 °F) | 13.73 MPa 140 kgf/cm ² 1991.2 psi |
|----------------------|--|--|

| | | |
|-------------------|---|---|
| Tightening torque | Hexagon socket head plug (P1 and P2 port) | 40.70 to 94.93 N·m 4.15 to 9.68 kgf·m 30.02 to 70.02 ft-lbs |
|-------------------|---|---|

■ IMPORTANT

- Measure quickly so that the high pressure relief valve may not be in operation more than 10 seconds.

■ NOTE

- When reinstall the hexagon socket head plug, take care not to damage the O-ring.

(1) P1 Port (Reverse)

(2) P2 Port (Forward)

W1013275