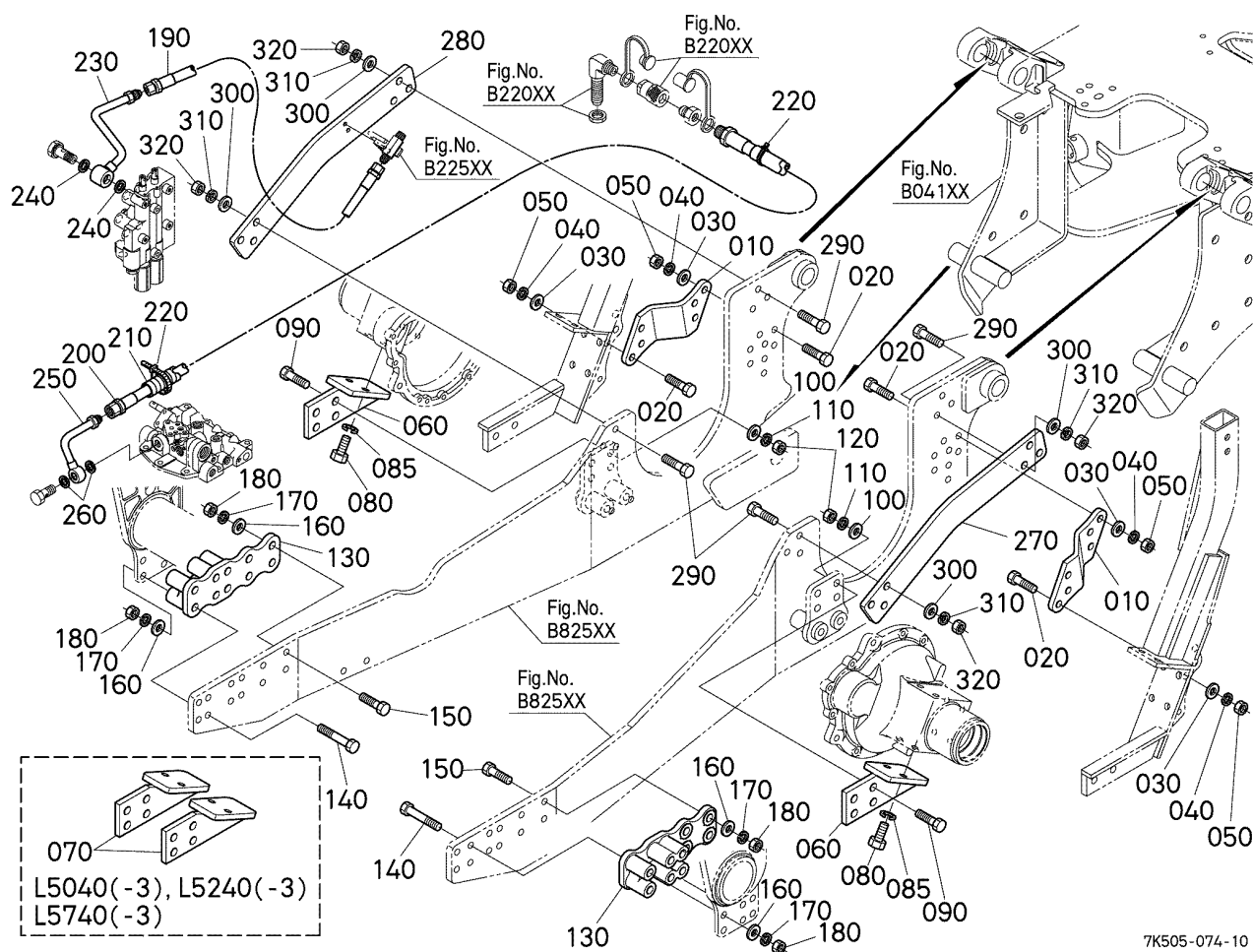


Update Date: 02/12/2013, Printing Date: 06/17/2013



7K505-074-10

No	Part Number	Part Name	Qty	IC	S/N	Remarks	lbs
010	7K500-16510	SUPPORT,FRAME	2		ASK DEALER		3,8852
010	7K505-16510	SUPPORT(FRAME,C)	2	NI	ASK DEALER		0.0
020	01073-51650	BOLT	12				0.231
030	75599-32517	WASHER,PLAIN(5/8HD)	12			5/8HD	0.0352
040	04512-60160	WASHER,SPRING	12				0.022
050	02076-50160	NUT	12				0.066
060	7K500-16640	BRACKET,REAR CDE	2			for L3940(-3), L4240(-3), L4740(-3)	5.72
070	7K500-16650	BRACKET,REAR F	2			for L5040(-3), L5240(-3), L5740(-3)	5.94
080	01073-51430	BOLT	4				0.1276
085	04512-60140	WASHER SPRING	4				0.0176
090	01073-51650	BOLT	8				0.231
100	75599-32517	WASHER,PLAIN(5/8HD)	8			5/8HD	0.0352
110	04512-60160	WASHER,SPRING	8				0.022
120	02076-50160	NUT	8				0.066
130	7K505-16480	BRACKET,FRONT(E41)	2				0.0
140	01073-51606	BOLT	12				0.506
150	01073-51660	BOLT	8				0.264
160	75599-32517	WASHER,PLAIN(5/8HD)	20			5/8HD	0.0352
170	04512-60160	WASHER,SPRING	20				0.022
180	02076-50160	NUT	20				0.066
190	7K500-64912	HOSE,INLET	1				0.0
200	7K505-64920	HOSE,OUTLET	1				0.0
210	7J046-76920	SLEEVE,RETURN	1				0.0
220	75590-64650	BAND,CODE	2				0.022
230	7K505-64940	PIPE,INLET	1				0.682
240	TD170-33560	GASKET	2				0.0066
250	7K500-64950	COMP.PIPE,OUTLET	1				0.418
260	67111-37180	GASKET	2				0.0066

No	Part Number	Part Name	Qty	IC	S/N	Remarks	lbs
270	7K500-16550	PLATE,CONNECTING LH	1				0.0
280	7K500-16560	PLATE,CONNECTING RH	1				0.0
290	01073-51650	BOLT	12				0.231
300	75599-32517	WASHER,PLAIN(5/8HD)	12			5/8HD	0.0352
310	04512-60160	WASHER,SPRING	12				0.022
320	02076-50160	NUT	12				0.066