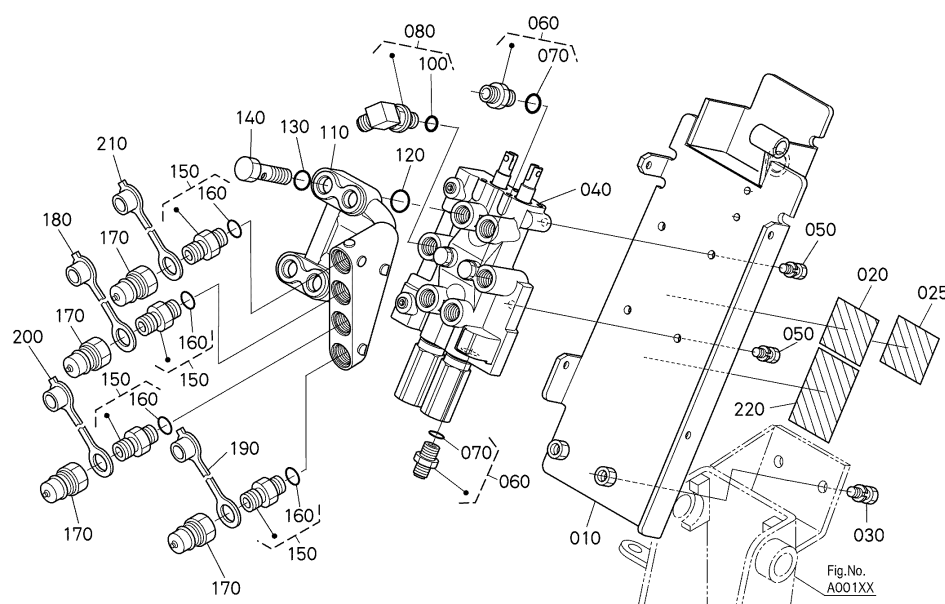


B00104 CONTROL VALVE [4POS C/V] ## LA211

S.No.>=30001 to 59999, & >=A0001 S.No.;>=30001 to 59999, & >=A0001
LA211 CONTROL VALVE

Update Date: 2021/04/21

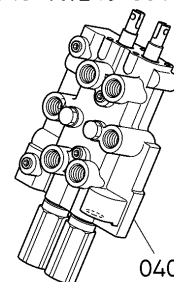
Printing Date: 2022/02/06



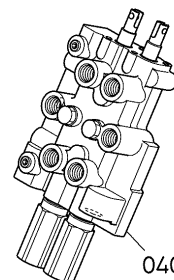
7J611-019-15

OLD

040 YW249-0010-2



040 YW249-0010-4



7J610-806-10

≡ Interchangeable

NI Not Interchangeable

>> New for Old

<< Old for New

No.	Part No.	Part Name	Qty	IC	Serial No./PIN	Remarks	.lbs
010	75538-90250	STAY,VALVE(LABEL)	1			ENGLISH	0.0
020	7J266-56490	LABEL,CAUTION 4	1			ENGLISH	0.0022
025	7J266-99682	LABEL,CAUTION 4(F)	1			FRENCH	0.0022
030	01123-51230	BOLT,SEMS	2		<=36279		0.088
030	01133-51230	BOLT,SEMS	2	>>	>=36280		0.088
040	YW249-00100	ASSY VALVE,CONTROL	1		<=33684	ORDER BY REF.No.040 NEW PART	15.18
040	YW249-00102	ASSY VALVE,CONTROL	1	>>	>=33685	ORDER BY REF.No.040 NEW PART	15.18
040	YW249-00102	ASSY VALVE,CONTROL	1		<=59999	ORDER BY REF.No.040 NEW PART	15.18
040	YW249-00102	ASSY VALVE,CONTROL	1		>=A0001	ORDER BY REF.No.040 NEW PART	15.18
040	YW249-00104	VALVE,CONTROL	1	>>	>=A0424		15.18
040	YS040-00100	VALVE,ASSY(CONTROL)	1	>>	>=A0548		0.0
050	01123-60820	BOLT,SEMS	4				0.033
060	75540-61800	ASSY ADAPTER 1 #700-6-8	2				0.132
070	75540-61820	O-RING	2				0.0022
080	75540-61900	ASSY ELBOW,ADJUSTABLE	1				0.242

This content is the information at the time of publication on this site, information such as the part name and part number may be different from the present. Illustrations of products and parts that are posted are image diagrams.

b2738b34-ad01-44c0-8c3a-afe1f9635488

B00104 CONTROL VALVE [4POS C/V] ## LA211

S.No.>=30001 to 59999, & >=A0001 S.No.;>=30001 to 59999, & >=A0001
LA211 CONTROL VALVE

Update Date: 2021/04/21

Printing Date: 2022/02/06

== Interchangeable

NI Not Interchangeable

>> New for Old

<< Old for New

No.	Part No.	Part Name	Qty	IC	Serial No./PIN	Remarks	.lbs
090	75540-61910	ELBOW,ADJUSTABLE	1				0.11
100	75540-61820	O-RING	1				0.0022
110	75538-61300	BLOCK ASSY,HYDRAULIC	1				6.138
120	04817-00210	O RING	4				0.0022
130	75540-61820	O-RING	4				0.0022
140	75538-61320	BOLT,JOINT	4				0.209
150	75532-61800	ASSY ADAPTOR 2 (#380	4				0.132
160	75540-61820	O-RING	4				0.0022
170	75536-66220	NIPPLE	4		<=59999	72N4-4F	0.088
170	7J612-66220	NIPPLE	4	>>	>=A0001	72N4-4F ORDER BY REF. No.170 NEW PART	0.0
170	7J612-66223	1/4 NIPPLE HNV14NPTM	4	>>	>=A0250	HNV14NPTM	0.0704
170	K2581-66220	1/4 NIPPLE H2-63	4	NI	>=B0005		0.0792
180	7J245-66410	1/4" CAP,DUST (72PDC-4B)	1			BLUE	0.022
190	7J245-66420	1/4" CAP,DUST (72PDC-4YY)	1			YELLOW	0.0374
200	7J245-66430	1/4" CAP,DUST (72PDC-4R)	1			RED	0.011
210	7J245-66440	1/4" CAP,DUST (72PDC-4W)	1			WHITE	0.0352
220	7J266-62360	LABEL,CONTROL	1		<=59999		0.0044
220	7J266-62360	LABEL,CONTROL	1		>=A0001		0.0044
220	7J053-62360	LABEL,CONTROL	1	>>	>=A0339		0.0022