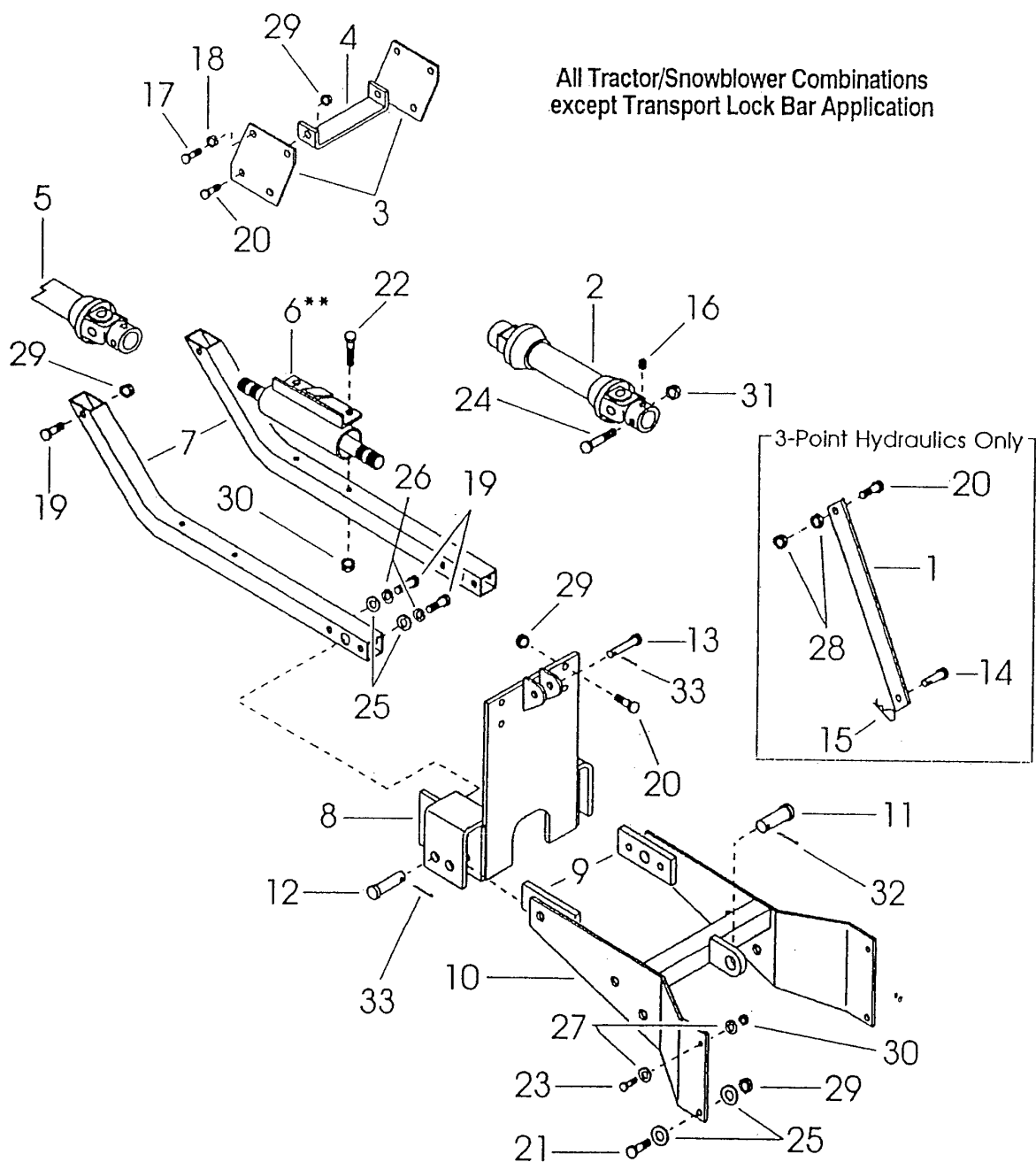


B2652 -> B2652 -> I00100 SUB-FRAME COMPONENTS ## B2652

Update Date: 09/06/2007, Printing Date: 11/01/2020



B2652 -> B2652 -> I00100 SUB-FRAME COMPONENTS ## B2652

Update Date: 09/06/2007, Printing Date: 11/01/2020

Interchangeable =, Not Interchangeable NI, New for Old >>, Old for New <<

No	Part Number	Part Name	Qty	RoundUp	IC	S/N	Remarks	Kg
----	-------------	-----------	-----	---------	----	-----	---------	----

B2652 -> B2652 -> I00100 SUB-FRAME COMPONENTS ## B2652

Update Date: 09/06/2007, Printing Date: 11/01/2020

Interchangeable =, Not Interchangeable NI, New for Old >>, Old for New <<

No	Part Number	Part Name	Qty	RoundUp	IC	S/N	Remarks	Kg
001	70050-94507	BAR TRANSPORT LOCK	1					0.0
002	70050-94187	DRIVELINE	1					0.0
003	70050-94508	PLATE MOUNTING	2					0.0
004	70050-94509	STIFFENER BAR	1					0.0
005	70050-94286	DRIVE SHAFT	1					0.0
006	----	HANGER BRACKET ASSY.	1				SEE BELOW	0.0
007	70050-94510	TUBE	2					0.0
008	70050-94511	FRONT MOUNTING WLDT.	1					0.0
009	70050-94512	BLOCK SPACER	2					0.0
010	70050-94513	LIFT WLDT.	1					0.0
011	70050-93232	CLEVIS PIN	1				1.0 x 2-1/4	0.0
012	75599-51880	CLEVIS PIN	2				3/4 x 4.0	0.0
013	75599-51552	CLEVIS PIN	1				1/2 x 2-5/8	0.0
014	75599-51520	PIN, CLEVIS (1/2 X 1.0)	1				1/2 x 1.0	0.066
015	70050-02036	HAIRPIN CLIP	1				1/8 x 2-9/16	0.0
016	70050-94194	SET SCREW	1				3/8-16 x 3/8	0.0
017	01053-51035	HEX.BOLT	4				M10-1.5 x 35	0.066
018	04512-60100	WASHER,SPRING	4				M10	0.0044
019	75599-01550	HEX BOLT	6				1/2-13 x 2-1/2	0.0
020	75599-01530	BOLT HEX. 1/2"NC X 1 1/2", GR.5, PTD	6				1/2-13 x 1-1/2	0.0
021	75599-01520	BOLT HEX. 1/2"NC X 1" GR.5, PTD.	2				1/2-13 x 1.0	0.0
022	75599-01350	HEX. BOLT 3/8" NC X 2 1/2" GR.5 PTD	2				3/8-16 x 2-1/2	0.0
023	75599-01320	BOLT HEX. 3/8" NC X 1" GR.5, PTD	2				3/8-16 x 1.0	0.0
024	75599-01250	BOLT	1				5/16-18 x 2-1/2	0.0
025	75599-32115	WASHER,PLAIN(1/2W)	8				1/2	0.044
026	75599-33015	WASHER,SPRING LOCK(1/2)	4				1/2	0.0132
027	75599-32113	WASHER,PLAIN(3/8W)	4				3/8	0.022
028	75599-31015	HEX.NUT(1/2-13UNC)	2				1/2-13	0.022
029	75599-31935	STOVER NUT 1/2", PTD	8				1/2-13	0.0
030	75599-31933	LOCKNUT 3/8-16 4	4				3/8-16	0.0
031	75599-31932	LOCKNUT 5/16-18	1				5/16-18	0.0
032	75599-52330	COTTER PIN	1				5/32 x 1-1/2	0.0

B2652 -> B2652 -> I00100 SUB-FRAME COMPONENTS ## B2652

Update Date: 09/06/2007, Printing Date: 11/01/2020

Interchangeable =, Not Interchangeable NI, New for Old >>, Old for New <<

No	Part Number	Part Name	Qty	RoundUp	IC	S/N	Remarks	Kg
033	75599-52220	PIN,SPRING	1				1/8 x 1.0	0.0044