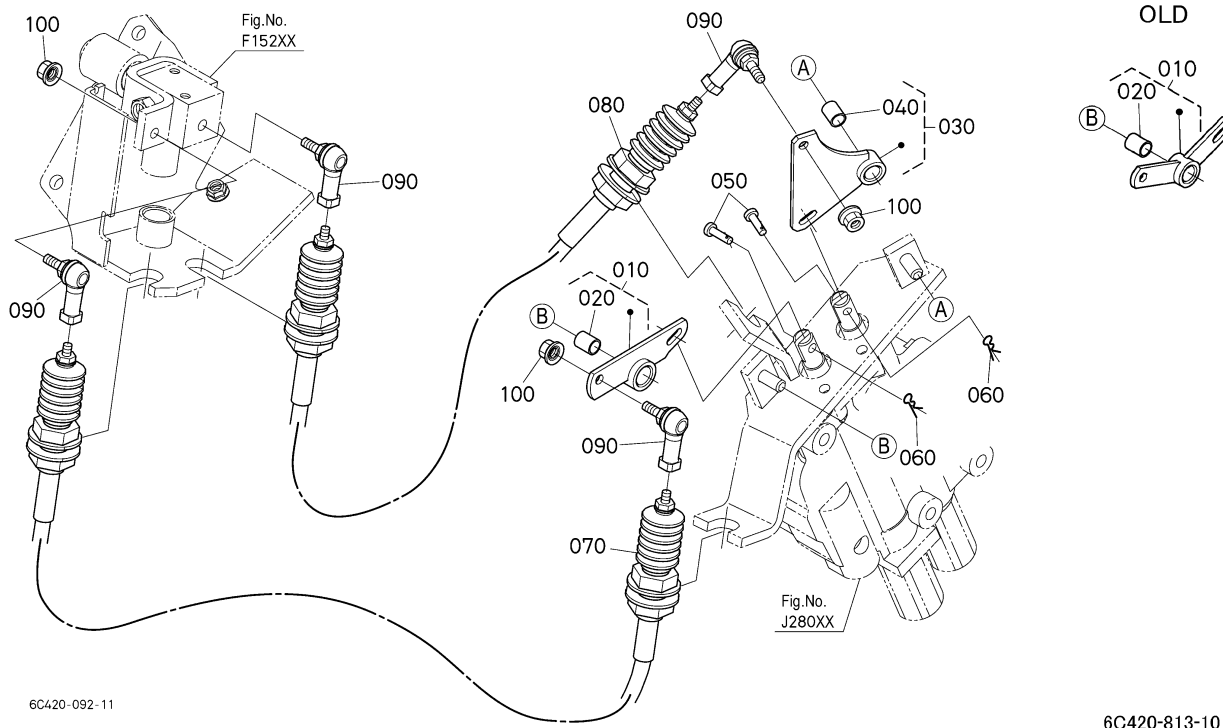


B2650HSDC -> HYDRAULIC SYSTEM -> J28400 LOADER VALVE LINK ##
 NOTE:ORDER BY REF.No.010 and Fig.No.J28000 REF.No.050 NEW PARTS.
 ## B2650HSDC

Update Date: 06/11/2020, Printing Date: 12/20/2020



B2650HSDC -> HYDRAULIC SYSTEM -> J28400 LOADER VALVE LINK ##
 NOTE:ORDER BY REF.No.010 and Fig.No.J28000 REF.No.050 NEW PARTS. ##
 B2650HSDC

Update Date: 06/11/2020, Printing Date: 12/20/2020

Interchangeable =, Not Interchangeable NI, New for Old >>, Old for New <<

No	Part Number	Part Name	Qty	RoundUp	IC	S/N	Remarks	Kg
010	6C430-38230	LINK,ASSY(SPOOL F)	1			<=62020	SEE NOTE	0.0792
010	6C430-38232	LINK,ASSY(SPOOL F)	1		NI	>=62021		0.0792
020	08511-00812	BUSH	1			<=62020		0.022
020	08511-01012	BUSH	1		NI	>=62021		0.0066
030	6C430-38250	LINK,ASSY(SPOOL,R)	1					0.022
040	08511-00812	BUSH	1			<=62020		0.022
040	08511-01012	BUSH	1		NI	>=62021		0.0066
050	68021-32790	PIN	2					0.0088
060	05525-50500	PIN SNAP	2					0.0022
070	6C430-38282	CABLE,ASSY(FRONT)	1			<=51055		0.88
070	6C430-38380	CABLE,ASSY(FRONT)	1		>>	>=51056		0.836
070	6C430-38480	CABLE,ASSY(FRONT)	1		>>	>=75283		0.8646
080	6C430-38302	CABLE,ASSY(REAR)	1			<=51055		0.88
080	6C430-38400	CABLE,ASSY(REAR)	1		>>	>=51056		0.858

B2650HSDC -> HYDRAULIC SYSTEM -> J28400 LOADER VALVE LINK ##
NOTE:ORDER BY REF.No.010 and Fig.No.J28000 REF.No.050 NEW PARTS. ##
B2650HSDC

Update Date: 06/11/2020, Printing Date: 12/20/2020

Interchangeable =, Not Interchangeable NI, New for Old >>, Old for New <<

No	Part Number	Part Name	Qty	RoundUp	IC	S/N	Remarks	Kg
080	6C430-38500	CABLE,ASSY(REAR)	1		>>	>=75283		0.891
090	32530-41520	BALL,LINK(BALL,R)	4					0.0528
100	02021-50060	NUT	3					0.0044