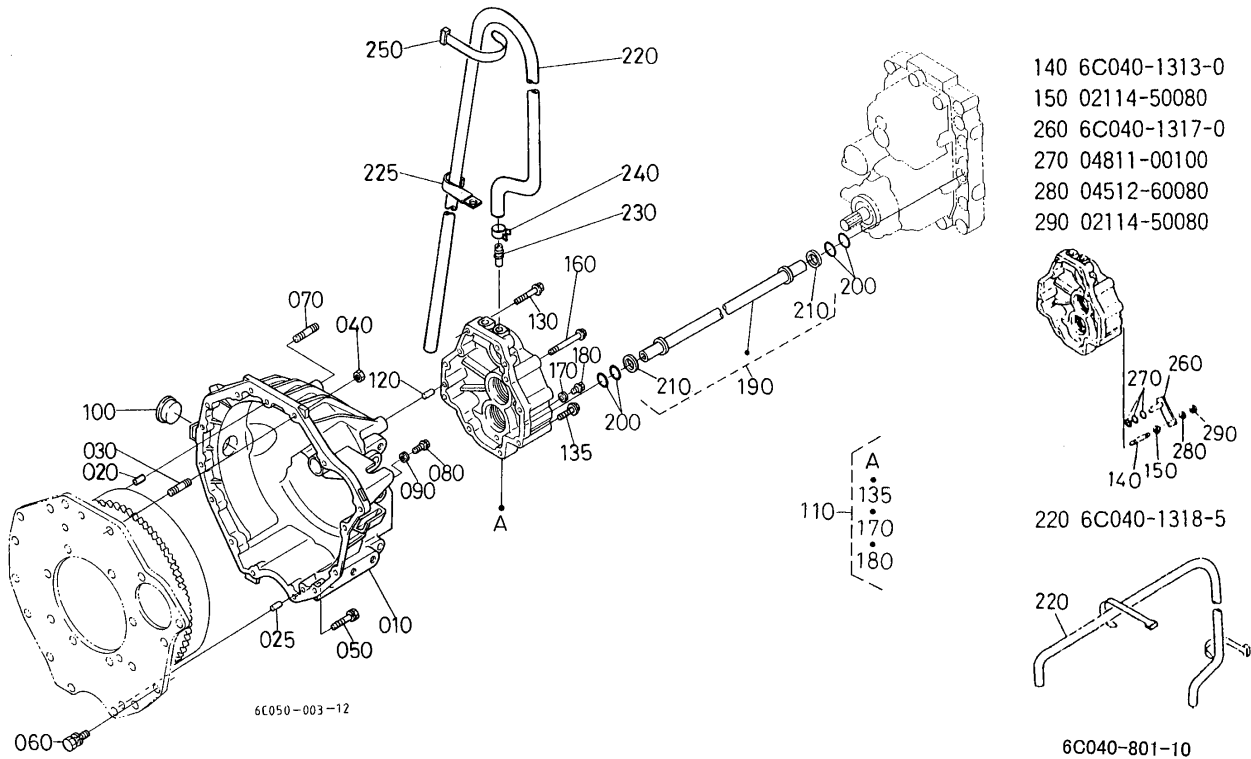


# B2100HSD -> CLUTCH -> C40100 CLUTCH HOUSING ## B2100HSD

Update Date: 10/25/2019, Printing Date: 11/07/2021



# B2100HSD -> CLUTCH -> C40100 CLUTCH HOUSING ## B2100HSD

Update Date: 10/25/2019, Printing Date: 11/07/2021

Interchangeable =, Not Interchangeable NI, New for Old >>, Old for New <<

No	Part Number	Part Name	Qty	RoundUp	IC	S/N	Remarks	Kg
010	6C040-13114	HOUSING,CLUTCH	1					11.44
020	05012-00814	PIN,STRAIGHT	2			<=72654		0.0132
020	05012-00814	PIN,STRAIGHT	1			>=72655		0.0132
025	66611-11160	PIN,KNOCK	1			>=72655		0.022
030	01517-51045	BOLT,STUD	2					0.0704
040	02118-50100	HEX.NUT	2					0.011
050	01123-50845	BOLT,SEMS	2					0.044
060	01123-50830	BOLT,SEMS	9				WITHOUT BI-SPEED TURN	0.033
060	01123-50830	BOLT,SEMS	7				WITH BI-SPEED TURN	0.033
070	01555-51225	BOLT,STUD	4					0.0858
080	01754-50812	BOLT,FLANGE	1					0.022
090	04717-00800	WASHER,SEAL	1					0.0022
100	37410-13124	PLUG	1					0.044
110	6C040-97810	COVER,CLUTCH HOUSING	1			<=73183		2.002

# B2100HSD -> CLUTCH -> C40100 CLUTCH HOUSING ## B2100HSD

Update Date: 10/25/2019, Printing Date: 11/07/2021

Interchangeable =, Not Interchangeable NI, New for Old >>, Old for New <<

No	Part Number	Part Name	Qty	RoundUp	IC	S/N	Remarks	Kg
110	6C040-97812	COVER,CLUTCH HOUSING	1		>>	>=73184		2.068
120	05012-00614	PIN,STRAIGHT	2					0.0088
130	01123-50840	BOLT,SEMS	3					0.0396
135	01123-50840	BOLT,SEMS	1			>=71078		0.0396
140	6C040-13130	STUD	1			<=71077		0.0528
150	02114-50080	HEX.NUT	1			<=71077		0.011
160	01123-50860	BOLT,SEMS	6					0.044
170	04717-01000	WASHER,SEAL	1					0.0022
180	06331-35010	PLUG	1					0.0264
190	6C040-13153	PIPE	1					0.55
200	04816-00180	O RING	4			<=72654		0.0044
200	04816-06170	O RING	4		>>	>=72655		0.011
210	6C040-13160	RING	2					0.0022
220	6C040-13185	HOSE,BREATHER	1			<=71256		0.0
220	6C040-13186	HOSE,BREATHER	1		>>	>=71257		0.462
225	34150-29390	CLAMP,CORD	1			>=71257		0.0088
230	6C040-13140	JOINT,PIPE	1					0.0352
240	09318-88200	CLAMP,HOSE	1			<=72270		0.0088
240	32721-39160	CLAMP,HOSE	1		=	>=72271		0.011
250	53581-64150	BAND,CORD	2			<=73517		0.0044
250	55311-41260	BAND,CORD	1		=	>=73518		0.0154
260	6C040-13170	ROD	1			<=71077		0.0528
270	04816-00100	O RING	3			<=71077		0.0022
280	04512-60080	WASHER,SPRING	1			<=71077		0.0044
290	02114-50080	HEX.NUT	1			<=71077		0.011