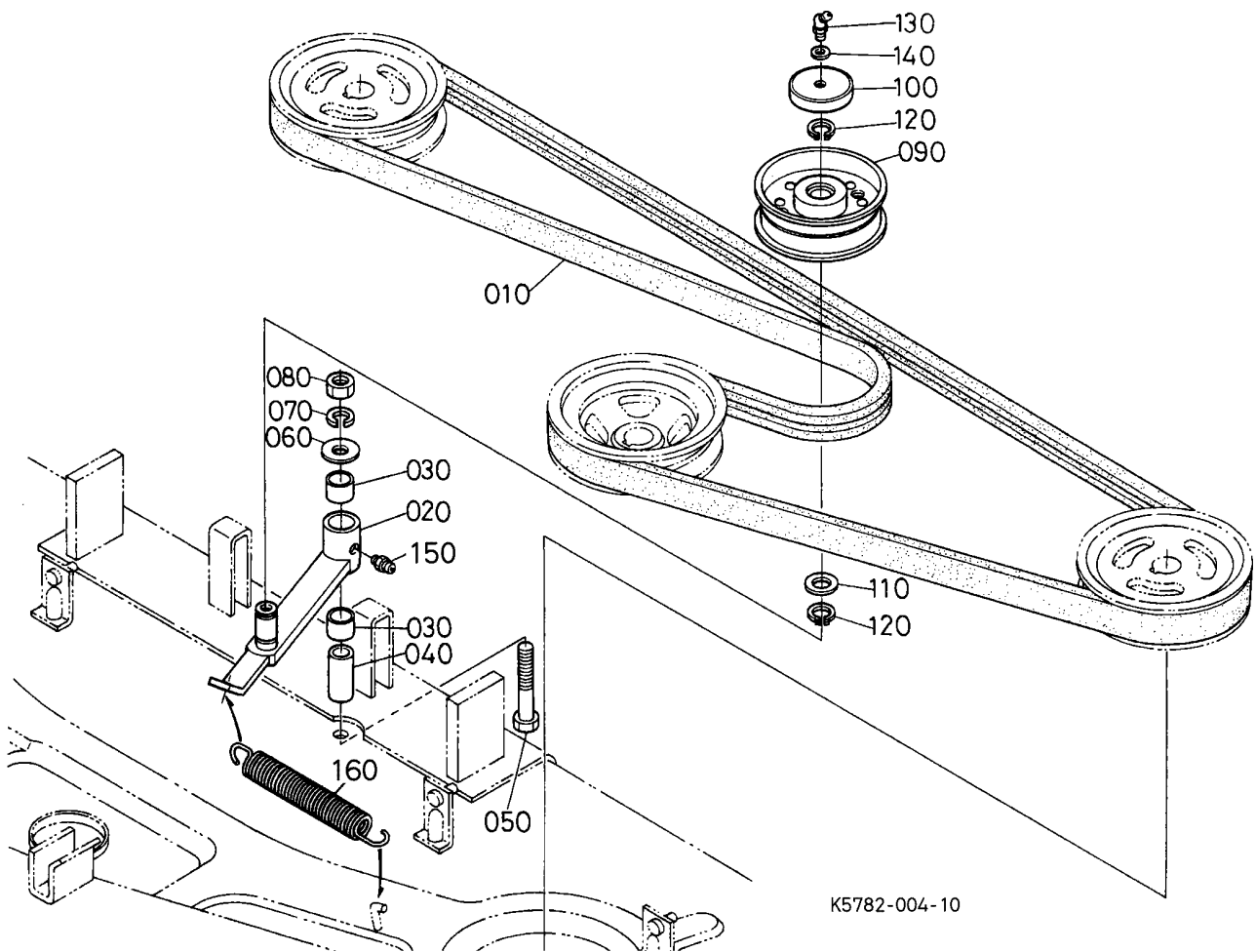


# RCK60-29B -> MOWER -> A01302 TENSION PULLEY

Update Date: 03/29/2013, Printing Date: 09/22/2013



| No  | Part Number | Part Name          | Qty | IC | S/N        | Remarks | lbs    |
|-----|-------------|--------------------|-----|----|------------|---------|--------|
| 010 | K5763-34712 | BELT(MULT)         | 1   |    |            |         | 1.958  |
| 020 | K5371-34730 | ARM,TENSION        | 1   |    |            |         | 1.254  |
| 030 | K5651-20150 | BUSHING(TENSION)   | 2   |    |            |         | 0.0374 |
| 040 | K5651-34780 | COLLAR(TENSION)    | 1   |    |            |         | 0.121  |
| 050 | 01073-51270 | BOLT               | 1   |    |            |         | 0.132  |
| 060 | 04013-60120 | WASHER,PLAIN       | 1   |    |            |         | 0.022  |
| 070 | 04512-60120 | WASHER,SPRING      | 1   |    |            |         | 0.011  |
| 080 | 02074-50120 | NUT                | 1   |    |            |         | 0.033  |
| 090 | K5651-34880 | PULLEY,TENSION     | 1   |    |            |         | 1.21   |
| 100 | K5651-34790 | COVER,TENSION      | 1   |    |            |         | 0.044  |
| 110 | K5651-34800 | SEAL(BEARING)      | 1   |    | ASK DEALER |         | 0.0    |
| 110 | K5651-34802 | SEAL(BEARING)      | 1   | >> | ASK DEALER |         | 0.0022 |
| 120 | 04612-00170 | CIR-CLIP,EXTERNAL  | 2   |    |            |         | 0.0022 |
| 130 | K5763-12100 | NIPPLE(GREASE,45') | 1   |    | ASK DEALER |         | 0.0    |
| 130 | K5763-12102 | NIPPLE(GREASE,45') | 1   | >> | ASK DEALER |         | 0.0154 |
| 140 | K5763-27350 | SHIM,ADJUST        | 1   |    |            | M8      | 0.0022 |
| 150 | K1122-15150 | NIPPLE,GREASE      | 1   |    | ASK DEALER | M6*1.0  | 0.0    |
| 150 | K1122-15152 | NIPPLE,GREASE      | 1   | >> | ASK DEALER | M6*1.0  | 0.0044 |
| 160 | K5763-34750 | SPRING(TENSION)    | 1   |    | ASK DEALER |         | 0.0    |
| 160 | K5763-34753 | SPRING(TENSION)    | 1   | >> | ASK DEALER |         | 0.374  |