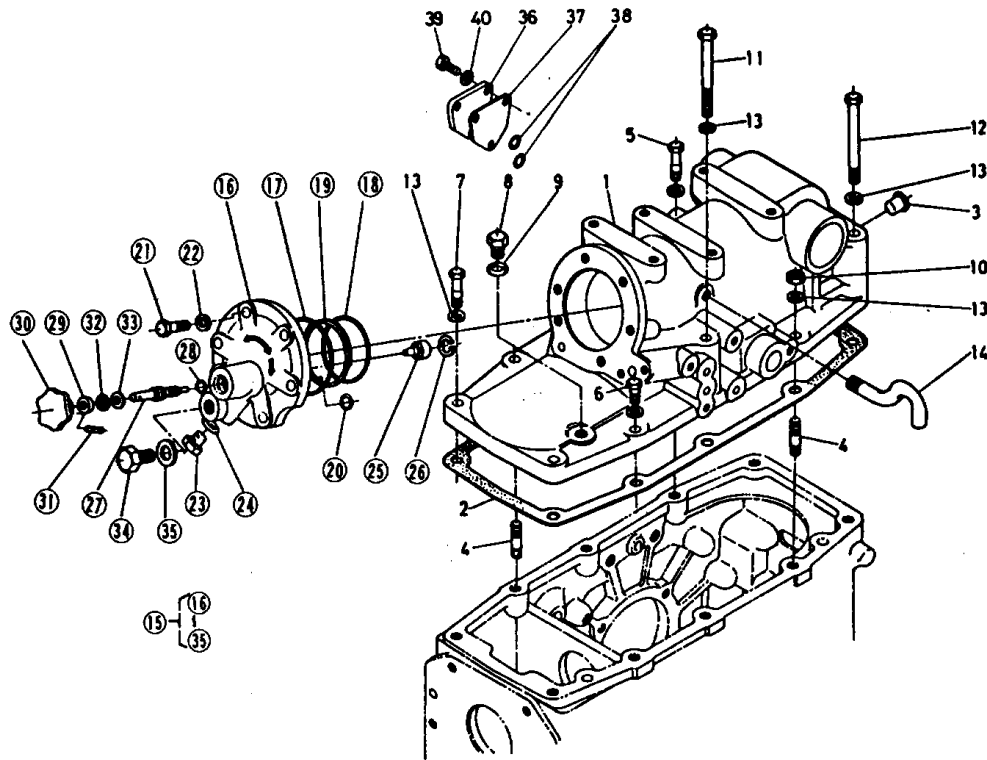


L245F -> HYDRAULIC SYSTEM -> 054000 O/P CYLINDER

Update Date: 06/13/2012, Printing Date: 07/04/2013



No	Part Number	Part Name	Qty	IC	S/N	Remarks	lbs
001	35210-37110	ASSY CYLINDER	1				44.22
002	37150-37120	GASKET	1				0.0
003	32210-27580	PLUG	4				0.0022
004	01574-51230	BOLT,STUD	2				0.0814
005	01173-51235	HEX.BOLT	1				0.088
006	01173-51230	HEX.BOLT	1				0.0814
007	01173-51240	HEX.BOLT	2				0.099
008	06311-35030	PLUG	1				0.1276
009	04717-01700	WASHER,SEAL	1				0.0066
010	02176-50120	HEX.NUT	2				0.022
011	01173-51295	HEX.BOLT	2				0.1892
012	01173-51200	HEX.BOLT	2				0.198
013	04512-50120	WASHER,SPRING LOCK	10				0.0066
014	34260-37270	PIPE BREATHER	1				0.066
015	37220-37200	ASSY COVER O/P CYLIN	1				7.26
017	04811-50900	O-RING	1				0.0066
018	04811-50700	RING	1				0.0044
019	34220-37290	RING BACK UP	1				0.0022
020	04810-00140	O RING	1				0.0022
021	01173-51038	BOLT	6				0.0616
022	04512-50100	WASHER,SPRING LOCK	6				0.0066
023	06331-35010	PLUG	1		ASK DEALER		0.0264
023	37150-36740	PLUG	1		ASK DEALER		0.055
024	04724-00100	GASKET	1				0.0022
025	34150-37250	COLLAR ADJUSTING	1				0.022
026	04611-00180	CIR-CLIP,INTERNAL	1				0.0022
027	34150-37220	SCREW ADJUSTING	1				0.055
028	04810-00100	O RING	1				0.0022

No	Part Number	Part Name	Qty	IC	S/N	Remarks	lbs
029	09230-08164	SEAL OIL	1				0.0022
030	34150-37230	GRIP	1				0.088
031	05411-00418	SPRING PIN	1				0.0022
032	34150-37260	CIR CLIP,INTERNAL	1				0.0022
033	04012-50080	WASHER,PLAIN	1				0.0022
034	37150-36730	PLUG	1				0.066
035	37150-36720	GASKET	1				0.0044
036	34260-37150	COVER	1				0.341
037	34260-37160	PLATE	1				0.088
038	04810-00160	O RING	2				0.0022
039	01153-50818	HEX.BOLT	3				0.022
040	04512-50080	WASHER,SPRING LOCK	3				0.0044