

PRODUCT SERVICE BULLETIN

The document is controlled electronically. Printed copies of this document are not controlled.
Document users are responsible for ensuring printed copies are the latest revision prior to use.

FIX AS FAIL: B/BX/V/ZD-Series; Defective Injection Pump

Repairs described in this bulletin may be made only in the event of a failure.

R1 revision: Added BX and ZD models and serials.

R2 revision: Updated the Claim Guidance Section with new Fix as Fail claim filing process.

Product Line: B-Series, BX-Series, V-Series, ZD-Series

Model: B2301, B2601, BX2670, RTV-X1100, RTV-X1120, RTV-X1140, ZD326, ZD331, and ZD1211

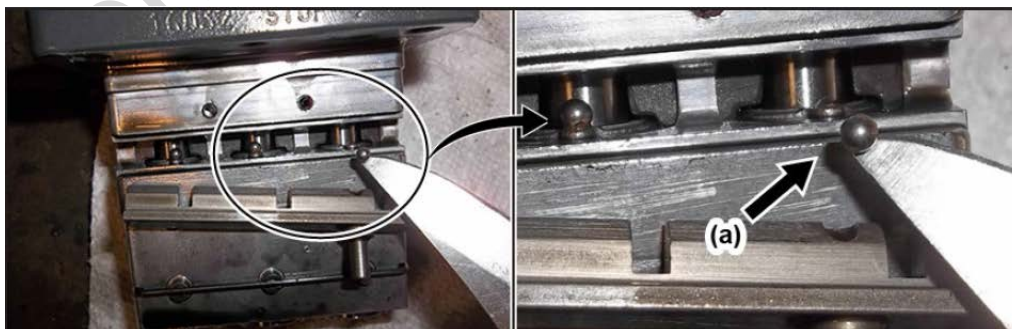
Serial Numbers Affected:

Model	Serial Numbers	Model	Serial Numbers	Model	Serial Numbers
RTV-X1100	10001 to 32734	RTV-X1120	10001 to 19559	RTV-X1140	10001 to 15453
B2301	50001 to 53222	B2601	50001 to 54185	BX2670	20229 to 28441
ZD326S-60	35190 to 37450	ZD326P-60	39400 to 44841	ZD326RP-60R	11484 to 12786
ZD326HL-72	10008 to 12054	ZD331P-60	33772 to 34019	ZD331LP-72	42450 to 43674
ZD331RP-60R	10991 to 11131	ZD1211-60	10001 to 12627	ZD1211L-72	10001 to 20517
ZD1211R-60R	10001 to 10239	ZD1211RL-72R	10001 to 10139		

Issue:

Injection pump may fail due to the insufficient weld penetration of the stopper ball (see example below). This will cause the injection pump to have issues controlling the amount of fuel injected. This can cause failure such as a loss of power, the unit blowing black smoke, and the engine not shutting off properly.

Example:



(a) Stopper Ball

Solution:

If this failure occurs, replace the Assy Pump, Injection with the below improved pump per the workshop manual for the affected model.

Parts Information:

Part Number	Description	Quantity
16032-51013	ASSY PUMP, INJECTION	1

Warranty Information:

This bulletin applies in the event of a failure and does not constitute warranty authorization to update units without a defect in material or workmanship. File warranty only in case of failure.

Warranty Term	Flat Rate Code	Models	Labor Allowance
5 Years from retail date (for this specific failure only)	PSB-2020-009	B2301, B2601 RTV-X1120, RTV-X1140	0.9 hours
		RTV-X1100	1.0 hour
		BX2670	0.7 hours
		ZD326S	0.4 hours
		ZD326P/HP/RP, ZD331P/HP/RP	0.5 hours
		ZD1211	0.6 hours

Claim Guidance:

1. Change claim type to **Campaign**.
2. Enter the **Serial Number**, Enter the base **Model Number** and select the correct match when it populates in the drop-down.
3. Enter the **Work Order No.**
4. Select the correct **Fix as Fail** from the **Service Campaign** drop-down
 - In some situations, campaigns require a series of tasks to be completed on a particular machine. This combination of tasks may not be the same for all units affected by the campaign. In such situations, please use care to select the correct version of the campaign from the drop-down menu for the machine.

Example: "PSB-20XX-XXX Repair A", or "PSB-20XX-XXX Repair B".
5. Enter **Machine Hours**.
6. Enter **Date of Repair**.
7. The claim will auto-populate the **Descriptions, Parts, and Labor**.