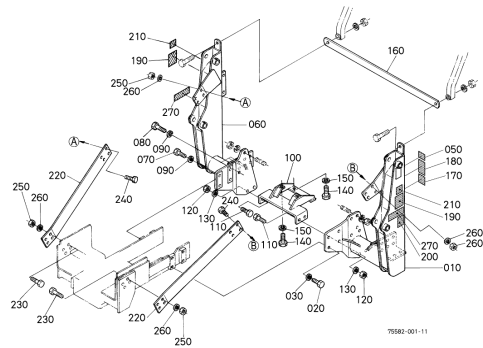


TL720 -> CHASSIS -> A00100 MAIN FRAME ## TL720  
Update Date: 11/24/2011, Printing Date: 11/10/2017



TL720 -> CHASSIS -> A00100 MAIN FRAME ## TL720  
Update Date: 11/24/2011, Printing Date: 11/10/2017

| Interchangeable =, Not Interchangeable NI, New for Old >>, Old for New << |             |                      |     |         |    |         |                  |    |        |  |
|---|-------------|----------------------|-----|---------|----|---------|------------------|----|--------|--|
| No  | Part Number | Part Name            | Qty | RoundUp | IC | S/N     | Remarks          | Kg |        |  |
| 010   | 75582-55010 | FRAME LH             | 1   |         |    |         |                  |    | 167.2  |  |
| 020   | 01176-51435 | HEX BOLT             | 8   |         |    |         | M14*1.5*35       |    | 0.1232 |  |
| 030   | 75599-33016 | WASHER SPRING LOCK ( | 8   |         |    |         | 9/16             |    | 0.176  |  |
| 050   | 75580-56370 | LABEL LUBRICATE      | 1   |         |    |         |                  |    | 0.0022 |  |
| 060   | 75582-55030 | FRAME RH             | 1   |         |    |         |                  |    | 226.6  |  |
| 070   | 01176-51440 | BOLT                 | 4   |         |    |         | M14*1.5*40       |    | 0.1342 |  |
| 080   | 01176-51435 | HEX.BOLT             | 3   |         |    |         | M14*1.5*35       |    | 0.1232 |  |
| 090   | 75599-33016 | WASHER SPRING LOCK ( | 7   |         |    |         | 9/16             |    | 0.176  |  |
| 100   | 75582-55910 | CONNECTOR            | 1   |         |    |         |                  |    | 17.16  |  |
| 110   | 75599-04635 | HEX.BOLT(9/16-18UNF* | 4   |         |    |         | 9/16-18UNF*1-3/4 |    | 0.1606 |  |
| 120   | 75599-31066 | HEX.NUT(9/16-18UNF)  | 4   |         |    |         | 9/16-18UNF       |    | 0.066  |  |
| 130   | 75599-33016 | WASHER SPRING LOCK ( | 4   |         |    |         | 9/16             |    | 0.176  |  |
| 140   | 01073-51230 | BOLT                 | 4   |         |    |         | M12*1.25*30      |    | 0.0902 |  |
| 150   | 04512-60120 | WASHER SPRING        | 4   |         |    |         | M12              |    | 0.011  |  |
| 160   | 75582-56710 | CONNECTOR SIDE FRAME | 1   |         |    |         |                  |    | 10.78  |  |
| 170   | 75546-56410 | LABEL DANGER 1       | 1   |         |    | <=27646 |                  |    | 0.0022 |  |
| 170   | 7J246-56410 | LABEL DANGER 1       | 1   |         | >> | >=27647 |                  |    | 0.0044 |  |
| 180   | 75546-56430 | LABEL DANGER 3       | 1   |         |    | <=27646 |                  |    | 0.0022 |  |
| 180   | 7J246-56430 | LABEL DANGER 3       | 1   |         | >> | >=27647 |                  |    | 0.0044 |  |
| 190   | 75546-56440 | LABEL WARNING        | 2   |         |    | <=27646 |                  |    | 0.0044 |  |
| 190   | 7J246-56442 | LABEL WARNING 1      | 2   |         | >> | >=27647 |                  |    | 0.022  |  |
| 200   | 75546-56450 | LABEL CAUTION 1      | 1   |         |    | <=27646 |                  |    | 0.0022 |  |
| 200   | 7J246-56450 | LABEL CAUTION 1      | 1   |         | >> | >=27647 |                  |    | 0.0044 |  |
| 210   | 75546-56470 | LABEL CAUTION 3      | 2   |         |    | <=27520 |                  |    | 0.0    |  |
| 210   | 75546-56472 | LABEL CAUTION 3      | 2   |         | >> | >=27521 |                  |    | 0.0022 |  |
| 220   | 75582-57410 | BRACE                | 2   |         |    |         |                  |    | 16.28  |  |
| 230   | 75599-04635 | HEX.BOLT(9/16-18UNF* | 8   |         |    |         | 9/16-18UNF*1-3/4 |    | 0.1606 |  |
| 240   | 75599-04630 | HEX. BOLT            | 8   |         |    |         | 9/16-18UNF*1-1/2 |    | 0.1474 |  |
| 250   | 75599-31066 | HEX.NUT(9/16-18UNF)  | 16  |         |    |         | 9/16-18UNF       |    | 0.066  |  |
| 260   | 75599-33016 | WASHER SPRING LOCK ( | 16  |         |    |         | 9/16             |    | 0.176  |  |
| 270   | 75582-58460 | LABEL TL720          | 2   |         |    |         |                  |    | 0.0176 |  |