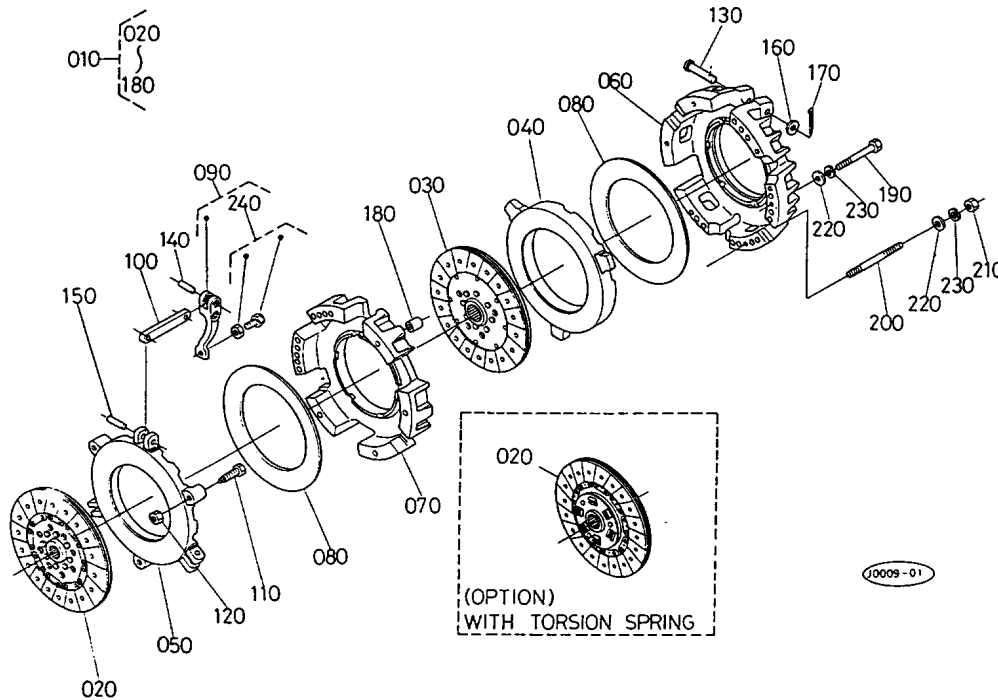


L3250DT -> CLUTCH -> T04601 CLUTCH (DC) ## L3250DT

Update Date: 09/01/2014, Printing Date: 03/03/2017



L3250DT -> CLUTCH -> T04601 CLUTCH (DC) ## L3250DT

Update Date: 09/01/2014, Printing Date: 03/03/2017

Interchangeable =, Not Interchangeable NI, New for Old >>, Old for New <<

No	Part Number	Part Name	Qty	RoundUp	IC	S/N	Remarks	Kg
010	32440-14200	ASSY CLUTCH DUAL	1					37.4
020	35350-99140	COMP.DISK CLUTCH	1					2.2
020	38150-14400	COMP.DISK CLUTCH	1				OPTION	2.64
030	32425-14450	COMP.DISK CLUTCH	1					2.2
040	38260-14430	PLATE,PRESSURE	1					4.62
050	32430-14440	PLATE,PRESSURE	1					6.6
060	32430-14410	COVER,CLUTCH	1					9.24
070	32430-14420	COVER,CLUTCH	1					9.24
080	32430-14520	SPRING,DIAPHRAGM	2					0.726
090	35290-99030	KIT LEVER,RELEASE	1					0.913
100	38260-14530	COMP ROD,RELEASE	3					0.176

L3250DT -> CLUTCH -> T04601 CLUTCH (DC) ## L3250DT

Update Date: 09/01/2014, Printing Date: 03/03/2017

Interchangeable =, Not Interchangeable NI, New for Old >>, Old for New <<

No	Part Number	Part Name	Qty	RoundUp	IC	S/N	Remarks	Kg
110	35290-14580	BOLT	3					0.077
120	02176-50100	HEX.NUT	3					0.011
130	38260-14560	PIN,JOINT	3					0.0484
140	34370-14570	PIN,STRAIGHT	3					0.0352
150	38260-14580	PIN,STRAIGHT	3					0.033
160	04012-50080	WASHER,PLAIN	3					0.0022
170	38260-14590	PIN,SPLIT	3					0.0022
180	34370-14590	PIPE,KNOCK	3					0.022
190	01153-50870	HEX.BOLT	4					0.0572
200	01513-50870	BOLT,STUD	2					0.0638
210	02156-50080	HEX.NUT	2					0.0088
220	04013-50080	WASHER,PLAIN	6					0.0066
230	04512-50080	WASHER,SPRING LOCK	6					0.0044
240	35290-14600	KIT,BOLT NUT	1					0.11