

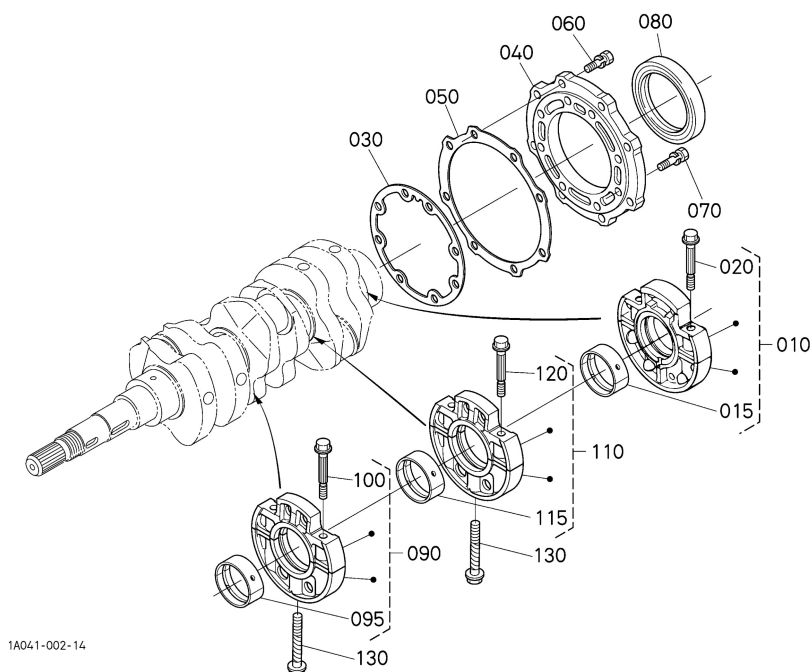
# 010002 MAIN BEARING CASE [NEW TYPE] ## L3130DT/GST/HST

S.No.>=3S000

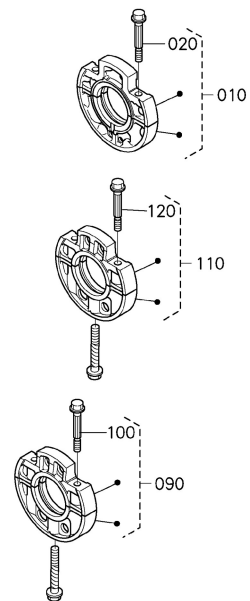
L3130DT/GST/HST ENGINE

Update Date: 2018/10/16

Printing Date: 2023/11/12



## OLD PARTS



1G726-809-10

≡ Interchangeable

NI Not Interchangeable

>> New for Old

<< Old for New

No.	Part No.	Part Name	Qty	IC	Serial No./PIN	Remarks	.lbs
010	1A041-07092	ASSY BRG.CASE WHEEL	1		<=3S1926		2.948
010	1A041-07093	ASSY BRG.CASE WHEEL	1	>>	>=3U0001		2.948
015	1A091-23480	METAL CRANKSHAFT	1		>=3U0001	STD SET	0.11
020	1A091-04540	BOLT BEARING CASE	2				0.077
030	1A091-04362	GASKET BEARING CASE	1				0.044
040	1G851-04810	COVER BEARING CASE	1		<=4W1690		1.089
040	1G851-04812	COVER BEARING CASE	1	>>	>=4Y0001		1.089
040	1G851-04813	COVER BEARING CASE	1	>>	>=6L0001		1.089
050	1A091-04820	GASKET CASE COVER	1				0.0198
060	01123-50825	BOLT	8				0.0286
070	01123-50828	BOLT	8				0.0308
080	19202-04460	SEAL OIL	1				0.121
090	1A091-07042	ASSY BRG.CASE MAIN	1		<=3S1926		2.948
090	1A091-07043	ASSY BRG.CASE MAIN	1	>>	>=3U0001		2.948
095	1A091-23480	METAL CRANKSHAFT	1		>=3U0001	STD SET	0.11
100	1A091-04540	BOLT BEARING CASE	2				0.077

This content is the information at the time of publication on this site, information such as the part name and part number may be different from the present. Illustrations of products and parts that are posted are image diagrams.

7d544ebb-aed6-457b-909a-a29872f5bb95