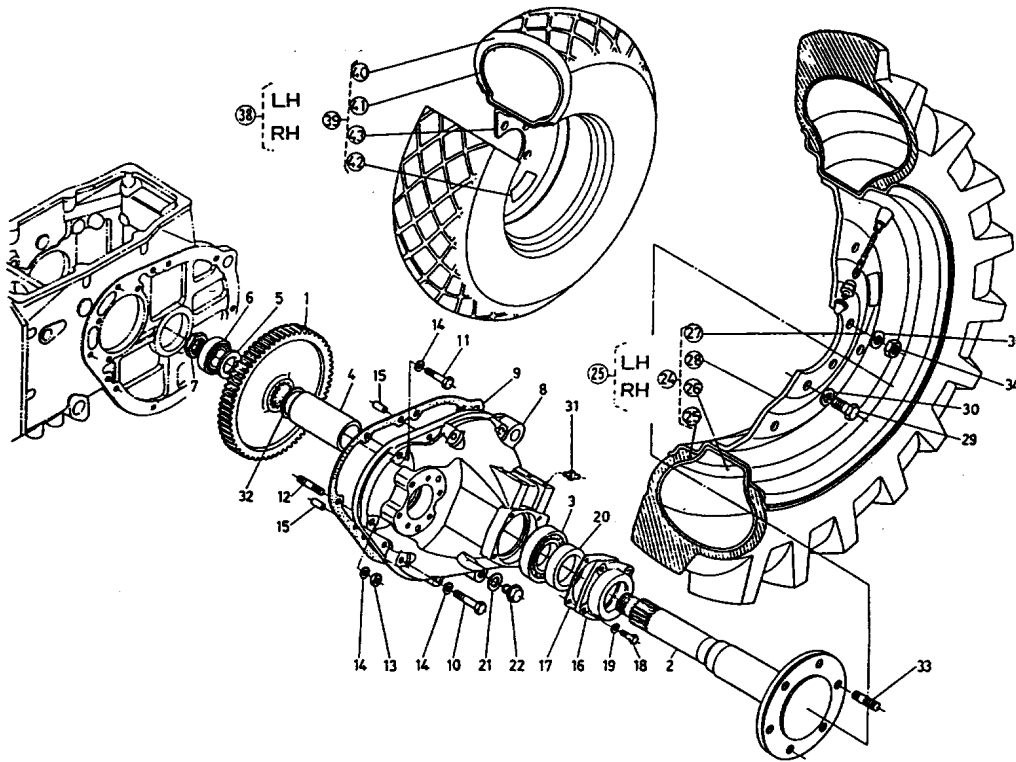


L225 -> REAR AXLE AND REAR WHEEL -> 220000 REAR WHEEL SHAFT ## L225

Update Date: 06/13/2012, Printing Date: 07/26/2019



L225 -> REAR AXLE AND REAR WHEEL -> 220000 REAR WHEEL SHAFT ## L225

Update Date: 06/13/2012, Printing Date: 07/26/2019

Interchangeable =, Not Interchangeable NI, New for Old >>, Old for New <<

No	Part Number	Part Name	Qty	RoundUp	IC	S/N	Remarks	Kg
001	34159-26833	GEAR 62	2			<=11403		0.0
001	34150-26833	GEAR 65	2			>=11404		0.0
002	34150-27116	ASSY SHAFT REAR WHEEL	2					0.0
003	08101-06209	BEARING,BALL	2					0.924
004	34150-27140	COLLAR	2					1.21
005	34150-27150	COLLAR	2					0.077
006	08101-06206	BEARING,BALL	2					0.429
007	34150-25320	NUT	2			<=13023		0.066
007	34150-25333	NUT	2			>=13024		0.0

L225 -> REAR AXLE AND REAR WHEEL -> 220000 REAR WHEEL SHAFT ## L225

Update Date: 06/13/2012, Printing Date: 07/26/2019

Interchangeable =, Not Interchangeable NI, New for Old >>, Old for New <<

No	Part Number	Part Name	Qty	RoundUp	IC	S/N	Remarks	Kg
008	34150-27317	CASE WHEEL SHAFT R	1			<=13523		0.0
008	34150-27318	CASE WHEEL SHAFT R	1			>=13524		0.0
008	34159-27310	SHAFT CASE RH	1			>=14524		24.2
008	34150-27337	CASE WHEEL SHAFT L	1			<=13523		0.0
008	34150-27338	CASE WHEEL SHAFT L	1			>=13524		0.0
008	34159-27330	SHAFT CASE LH	1			>=14524		23.144
009	34150-27322	GASKET SHAFT CASE	2					0.0
010	01173-51050	HEX.BOLT	12			<=13523		0.077
010	01173-51055	HEX.BOLT	12			>=13524		0.0792
011	01173-51042	BOLT	2					0.066
012	34150-27440	STUD	2					0.055
013	02117-50100	NUT	2					0.0
014	04512-50100	WASHER,SPRING LOCK	16					0.0066
015	05012-01022	PIN STRAIGHT	4					0.0308
016	34150-27510	COVER REAR WHEEL SHA	2			<=10003		1.1
016	34150-27514	COVER REAR WHEEL SHA	2			>=10004		0.0
016	34150-27910	COVER REAR WHEEL SHA	2			>=11904		0.0
016	34150-27515	COVER REAR WHEEL SHA	2			>=13024		0.0
017	34150-27520	GASKET	2			>=11904		0.0
018	01153-50822	HEX.BOLT	8			<=13023		0.0242
018	01153-50835	HEX.BOLT	8			>=13024		0.0352
019	04512-50080	WASHER,SPRING LOCK	8					0.0044
020	09505-27010	SEAL OIL	2			<=11003		0.0
020	09500-52709	SEAL OIL	2			>=11004		0.0616
020	34150-27560	SEAL OIL	2			>=11904		0.2024
021	04717-01700	WASHER,SEAL	2					0.0066
022	34150-27580	PLUG	2					0.0022

L225 -> REAR AXLE AND REAR WHEEL -> 220000 REAR WHEEL SHAFT ## L225

Update Date: 06/13/2012, Printing Date: 07/26/2019

Interchangeable =, Not Interchangeable NI, New for Old >>, Old for New <<

No	Part Number	Part Name	Qty	RoundUp	IC	S/N	Remarks	Kg
023	34209-27900	ASSY WHEEL REAR	1					0.0
024	34209-27910	WHEEL REAR LH	1					0.0
024	34209-27990	WHEEL REAR RH	1					99.0
025	31220-27620	TIRE	2					59.4
026	31220-27630	TUBE	2					5.94
027	32210-27832	LABEL AIR PRESSURE	2					0.0
028	34159-27950	WHEEL	2					0.0
029	01073-51628	BOLT	12			<=11003		0.1672
029	01073-51630	BOLT	8			>=11004		0.1738
030	04513-50500	WASHER LOCK	12					0.0
031	06613-10675	NIPPLE,GREASE	2					0.0066
032	34150-27160	SHIM	2					0.022
033	34150-27710	STUD	4			>=11004		0.1364
034	02074-50160	NUT	4			>=11004		0.0638
035	09230-52707	OIL SEAL	2			<=11903		0.044
036	06611-15010	NIPPLE GREASE	2			<=11903		0.022
037	34150-27530	COLLAR	2			<=13023		0.077
038	34159-27600	ASSY WHEEL REAR	1					0.0
039	34159-27610	WHEEL REAR LH	1					121.0
039	34159-27690	WHEEL REAR RH	1					0.0
040	99424-27110	TIRE	2					66.0
041	99424-27120	TUBE	2					8.36
042	34159-27830	LABEL	2					0.0022
043	34159-27650	WHEEL	2					33.0