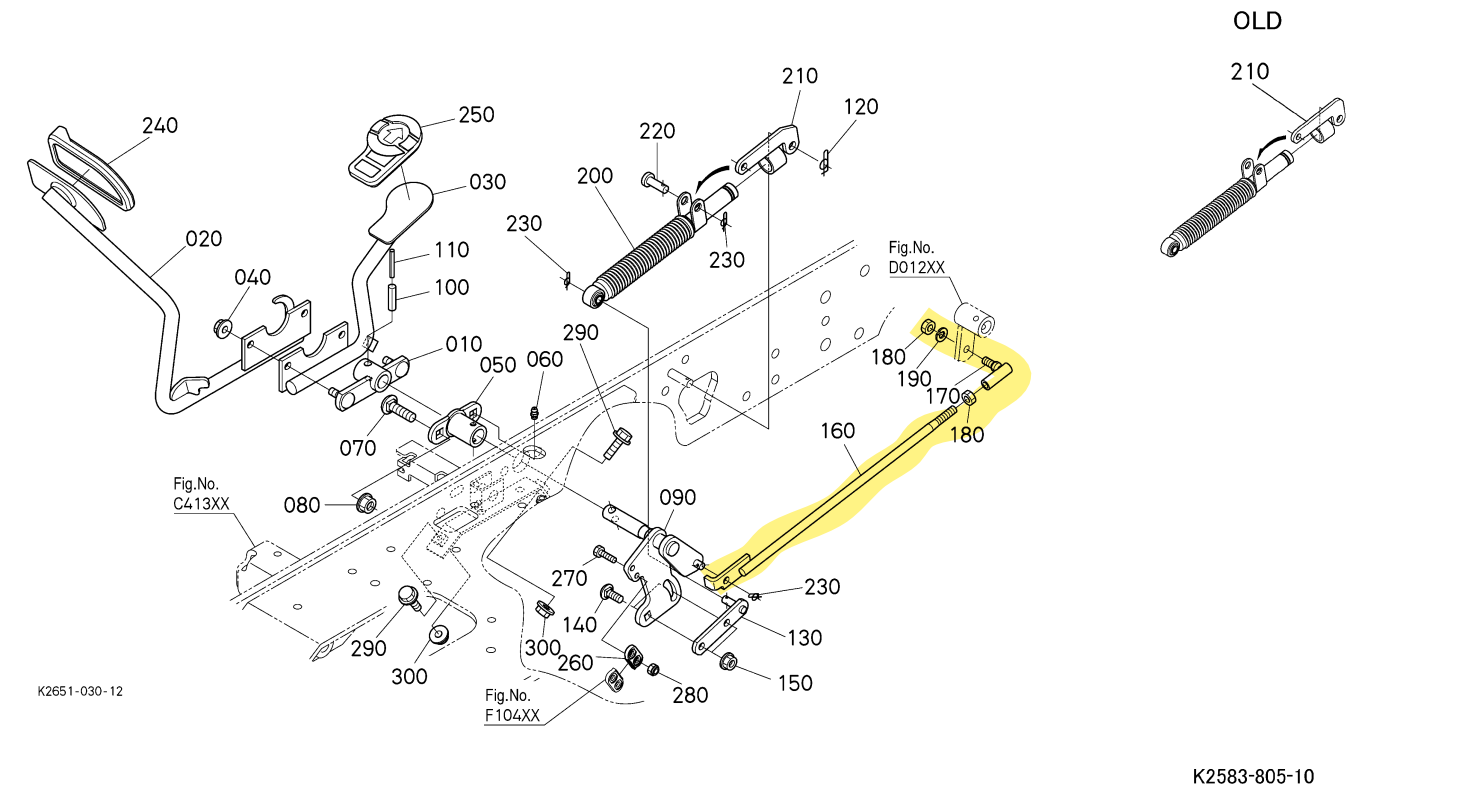


F10802 SPEED CONTROL PEDAL ## BX25
BX25 SPEED CHANGE

Update Date: 2024/04/19
Printing Date: 2024/07/28



= Interchangeable **NI** Not Interchangeable **>>** New for Old **<<** Old for New

No.	Part No.	Part Name	Qty	IC	Serial No./PIN	Remarks	.lbs
010	K2581-42193	BOSS,HST PEDAL CENT.	1				0.0
010	K2581-42194	BOSS(HST PEDAL MID)	1	=			0.0
020	K2581-42114	PEDAL,HST F	1				0.0
030	K2581-42123	PEDAL(HST R)	1				0.0
040	02751-50080	NUT,FLANGE	2				0.0132
050	K2581-42030	BOSS (HST PEDAL)	1				0.0
060	67211-42940	NIPPLE,GREASE	1				0.0022
070	K2581-54860	BOLT,SQUARE NECK	2		<=58857		0.0616
070	K2581-54862	BOLT(SQ.NECK,M10X1.5-35)	2	>>	>=58858		0.0616
080	K1122-91960	NUT,FLANGE(M10*1.5)	2		<=58460		0.0264
080	K1122-91962	NUT(FLANGE,M10*1.5)	2	>>	>=58461		0.0264
090	K2651-42044	LINK,PEDAL HST	1				0.0
090	K2651-42045	LINK(HST PEDAL)	1	=			0.0
100	05411-00836	PIN,SPRING	1				0.0176
110	0Y540-50322	PIN,SPRING	1				0.0
120	K1211-91130	RUE RING COTTER	1		<=61246		0.022

F10802 SPEED CONTROL PEDAL ## BX25
BX25 SPEED CHANGE

Update Date: 2024/04/19
Printing Date: 2024/07/28

= Interchangeable NI Not Interchangeable >> New for Old << Old for New

No.	Part No.	Part Name	Qty	IC	Serial No./PIN	Remarks	.lbs
120	K1211-91132	RUE-RING(COTTER)	1	>>	>=61247		0.022
130	K2651-42140	ARM	1				0.0
130	K2651-42142	ARM(DAMPER)	1	=			0.0
140	K1122-91330	BOLT(SHORT SQ. NECK,M8*1.25)	2		<=57621		0.0
140	K1122-91332	BOLT	2	>>	>=57622		0.033
150	02751-50080	NUT,FLANGE	2				0.0132
160	K2651-42172	ROD,SPEED CHANGE	1				0.0
160	K2651-42173	ROD(SPEED CHANGE)	1	=			0.0
170	K1122-42080	ROD END,5/16-24UNF	1				0.066
180	75599-31022	NUT	2				0.033
190	04512-60080	STOP LOCK OF 8	1				0.0044
200	32721-43350	DAMPER,HST	1		<=58460		0.572
200	K2651-42150	DAMPER(HST)	1	>>	>=58461		0.0
210	K2651-42131	STAY	1		<=52755		0.0
210	K2651-42132	STAY	1	>>	>=52756		0.0
210	K2651-42133	STAY(DAMPER)	1	=			0.0
220	05112-50825	PIN,JOINT	1		<=56890		0.0242
220	05122-50825	PIN,JOINT	1	>>	>=56891		0.0242
230	K1211-91120	RUE RING COTTER	3		<=61627		0.0022
230	K1211-91122	RUE RING COTTER	3	>>	>=61628		0.0022
240	K2581-42310	COVER,HST PEDAL F	1				0.0
250	K2581-42320	COVER,HST PEDAL R	1				0.0
260	K2571-43424	LOCK,CRUISE	1				0.033
270	01053-50620	BOLT	2				0.0132
280	02552-50060	LOCKNUT	2				0.0044
290	01754-50825	BOLT,FLANGE	2		<=53407		0.022
290	01754-50830	BOLT,FLANGE	2	NI	>=53408		0.0352
300	02751-50080	NUT,FLANGE	2				0.0132